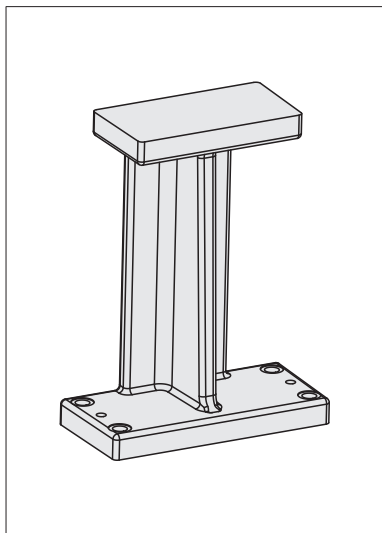




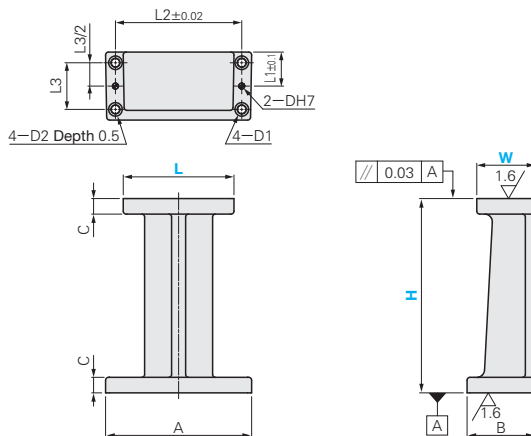
I 型スタンド -アルミ鋳造-

I SHAPE SUPPORT

-CAST ALUMINUM-



GZAG



Material AC4A

Catalog No. Type	W	L	H	L1	L2	L3	D	D1	D2	A	B	C	
GZAG	40	40	30	20	52	24	5	7	11	64	40	12	
			50										
			75										
			100										
			125										
			150										
	60	60	30	30	76	42	6	9	14	92	60	70	16
			50										
			75										
			100										
			125										
			150										
60	94	100	35	116	52	6	9	16.5	134	70	16	16	
		125											
		150											
		180											
		200											
		100											
112	112	125	35	130	48	6	9	16.5	134	70	16	16	
		150											
		180											
		200											
		250											
		300											

Catalog No. Type	W	L	H	L1	L2	L3	D	D1	D2	A	B	C
GZAG	80	80	50	48	96	45	6	9	14	118	80	16
			75									
			100									
			125									
			150									
			180									
	112	112	100	51	130	80	8	9	150	100	16	16
			150									
			200									
			250									
			300									
			100									
120	120	150	50	142	80	8	9	16.5	160	16	16	
		200										
		250										
		300										
		100										
		150										

Alterations Catalog No. — L — H — (B)
GZAG 60 — 94 — 180 — B

Alterations	Code	Spec.
Surface coated with blue paint	B	Non-operating surface of support coated with blue paint.

Order Catalog No. — L — H
GZAG 60 — 94 — 180

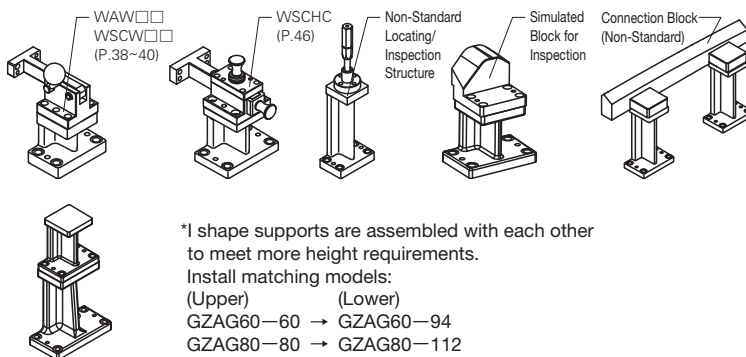
Delivery **Quotation**

Example

The top surface can be used to mount various components or serves as the supporting structure. Various usage needs are satisfied by selecting different sizes and heights of the mounting surface.

*Applicable to USCWM, UAWK, WSCW□□, WAW□□, TSC□□, TA□□, WSCHC, USCHC, WSHK, WSCWM, USWML, USCLM and UALK series;

*Also applicable to other standard/non-standard components with the same mounting dimensions.



*I shape supports are assembled with each other to meet more height requirements.

Install matching models:
(Upper) (Lower)
GZAG60—60 → GZAG60—94
GZAG80—80 → GZAG80—112

When installed in combination, it is recommended that the upper support is no higher than the lower support.

STAND COMPONENTS