

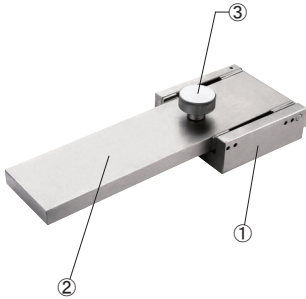


スチール横式回転ユニット -U型・大-

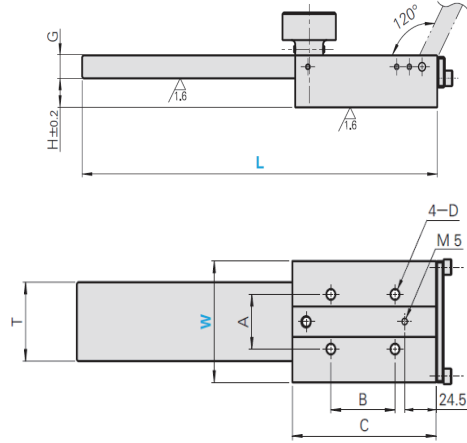
STEEL HORIZONTAL FLIP COMPONENTS

-U SHAPE · LARGE TYPE-

UNITS AND RELATED COMPONENTS



USWML



No.	Name	M	Material	S	Surface Treatment	H	Hardness
①	U shape main body	S45C	Nickel coating	26-32HRC			
②	Swing arm	S45C	Nickel coating	26-32HRC			
③	Screw knob	S45C	Nickel coating				

Catalog No.		L	C	T	A	B	H	G	D
Type	W								
USWML	80	280	112	52	36	50	19	15	7
	120	320	120	80	65	72	23	18	9



Order

Catalog No. — L
USWML 120 — 320



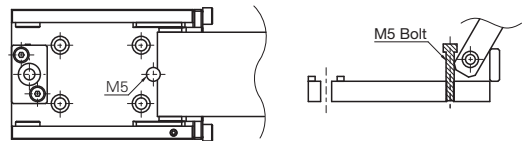
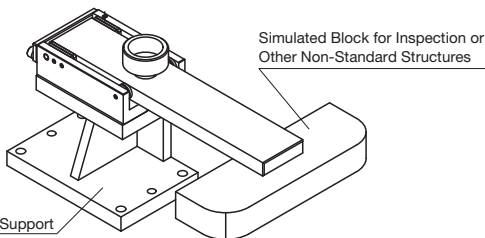
Delivery

Quotation



Example

Profile simulated blocks or other non-standard structures are mounted onto the front end of the swing arm, and I shape supports (GZAG, GDAG) can be attached to the bottom, thereby allowing use at different heights.



After the swing arm opens, the bolt can be screwed into the M5 tap hole at the center inside the body to prevent the swing arm from dropping due to accidental touch.

USWML80—280 support: GZAG80—112(P.54)
USWML120—320 support: GDAG120(P.55)