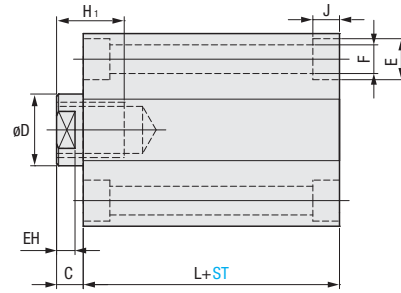
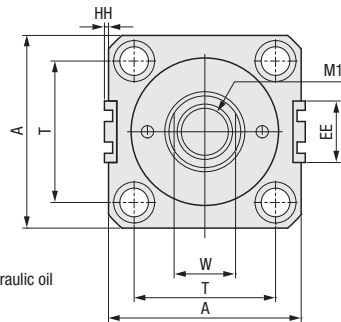
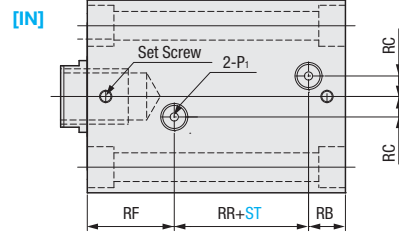
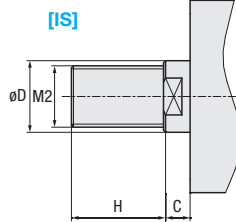


# HYDRAULIC CYLINDER - COMPACT

— Compact (Switch Mounted Single Rod Type) SD 70 • 140kgf/cm<sup>2</sup> Basic Type —



K-HCMG-SD70 / K-HCMG-SD140



Body (tube) : SUS303  
 Rod : S45C+Cr plating  
 Piston : AL7075  
 Rod End Cap : AL7075  
 Applicable operating fluid : General mineral hydraulic oil  
 Operating pressure range : 3~70(140)kgf/cm<sup>2</sup>  
 Operating speed range : 8~100mm/sec  
 Operating temperature range : -10~80°C

Component : 1 lock nut (IS Type Only)  
 2 Auto Switches

Internal Diameter	Rod B Type				A	T	W	(*) L	H <sub>1</sub>	C	EH	E	F	J	(*) RR	RF	(*) RB	RC	P <sub>1</sub>	HH	EE
	D	H	M1	M2																	
32	18	25	M12×P1.75	M16×P1.5	62	47	14	69	15	10	7	11	6.6	6.5	29	28	12	10	PT1/4	2	23
40	22	30	M16×P2	M20×P1.5	70	52	19	70	20	10	7	14	9	8.6	31	27	12	10	PT1/4	2	26
50	28	35	M20×P2.5	M24×P1.5	80	58	24	75	24	11	8	17.5	11	10.8	34	28	13	10	PT1/4	2	30
63	35	45	M27×P3	M30×P1.5	94	69	30	82	33	13	9	20	14	13	39	30	13	10	PT1/4	2	30
80	45	60	M30×P3.5	M39×P1.5	114	86	41	93	36	17	14	23	16	15.2	40	35	18	15	PT3/8	2	30
100	55	75	M39×P4	M48×P1.5	140	105	50	125	45	20	14	26	18	17.5	50	50	25	18	PT1/2	1	30
125	70	95	M48×P5	M64×P2.0	170	130	65	155	50	25	18	32	22	21.5	47	70	38	23	PT3/4	1	30

Ⓢ When the internal diameter is set at 32 • 40 & ST101 or more, then dimensions marked with (\*) in the above table will change as shown in the table below.

Part Number		Internal Diameter	1mm increments		Rod End	
TYPE	No.		ST		M	
			Female Screw	Male Screw		
K-HCMG (Switch Mounted Single Rod Type)	SD70 SD140	32	5 ≤ ST ≤ 100 (*) 101 ≤ ST ≤ 200		IN	IS
		40	Ⓢ When the internal diameter is set at 32 • 40 & ST101 or more, then dimensions marked with (*) in the above table will change as shown in the table below.			
		50				
		63				
		80				
		100				
		125	5 ≤ ST ≤ 200			

\* K-HCMG type has two default auto switches mounted on the right. If you want to change the quantity of the auto switch, please contact us.



Order

Part Number	Internal Diameter	ST	M
K-HCMG-SD70	40	80	IN
K-HCMG-SD140	50	100	IS

■ (\*) Table of dimensions changed from Internal Diameter 32 • 40 & ST101 or more.

Internal Diameter	L	RR	RB
32	87	31	28
40	87	33	27



Days to Ship

**Quotation**

