

NEW

CARTRIDGE HEATERS

HIGH WATTAGE CARTRIDGE HEATER LEAD WIRE BOTTOM REINFORCED TYPE

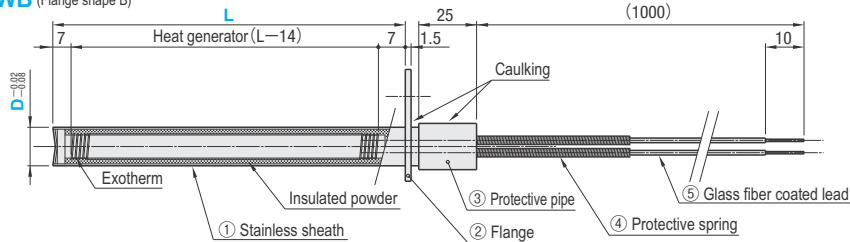
— L DIMENSION / WATTAGE / FLANGE SELECTION —

RoHS



* Comes with protective spring only when alternation code "SP" is used.

MNCHWN (No flange)
MNCHWA (Flange shape A)
MNCHWB (Flange shape B)



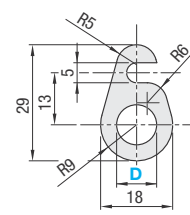
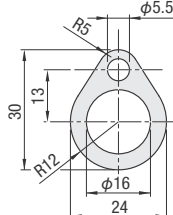
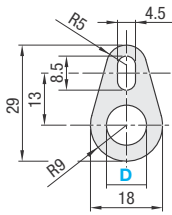
MNCHWA (Flange shape A)

MNCHWB (Flange shape B)

•D8~12

•D16

- ① Stainless sheath
- ② Flange
- ☒ Material SUS304
- ② ③ ④ Heat proof temperature: below 180°C



W/cm ² (Watt density)	Part Number		L 1mm increments	V (Voltage) selection	W (Wattage) 10W increments
	Type	D			
15 ≤ W/cm ² ≤ 60 W/cm ² = W / {D × (L - 14) × 3.14 / 100}	MNCHWN (No flange)	8	50~400	200 220	140~3000
	MNCHWA (Flange shape A)	10			170~3750
	MNCHWB (Flange shape B)	12			200~5000
			16	50~600	

☑ Specify the wattage such that the Watt density (W/cm²) is within the range 15 ≤ W/cm² ≤ 60. ☒ MNCHWB is not available for D16.

☑ MNCHWB: Available for D8 to 12.



Order

Part Number	L	V	W
MNCHWN8	150	V200	W560
MNCHWA16	300	V220	W4940
MNCHWB10	200	V200	W3400



Alterations



Part Number	L	V	W	(JC-SP)
MNCHWN 8	200	V200	W600	JC2
MNCHWB10	400	V220	W1400	JC2-SP100



Days to Ship

Quotation



Price

Quotation

Alterations	Code	Spec.	1Code	
	JC	Change the length of the lead wire.	Quotation	
		Designation method		Lead wire length (mm)
		JC2		2000
	JC3	3000		
	SP	Attach a spring that protects the lead.	Quotation	
		Designation method		Protective spring length (mm)
		SP100		100
		SP200		200
	SP300	300		

COMPONENTS FOR MOLD COOLING AND TEMPERATURE CONTROLLING SYSTEMS