

CARTRIDGE HEATERS / BOLTS FOR CARTRIDGE HEATER

-OUTPUT DESIGNATION TYPE-

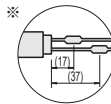
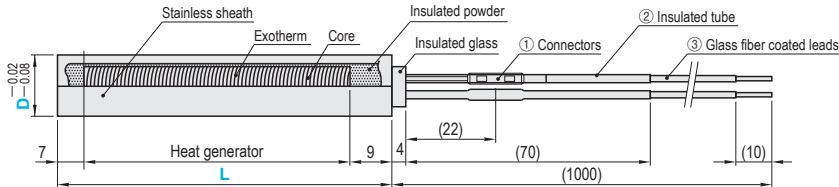
Refer to P.354 for new release lubricant seizure inhibitor

RoHS10

Cartridge Heater

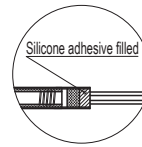


MCHV



① Connector position (22) becomes two separate positions 17 and 37 for two connectors when D6, 6.5 and 8.

① ② ③ Heat resistance: 180°C or lower
 SUS321



※ D6 and 6.5 are filled with silicone adhesive without the use of insulated glass.

V (Voltage)	W (Wattage)	W/cm ² (Watt density)	Lead nominal cross-sectional area (mm ² ,sq)	Part Number Type	D	L	V	W	Unit Price 1~9 pcs	
100	50	7.6	0.5	MCHV	6	50	50	50	Quotation	
	100	6.2					100	100		
	110	14.5					50	110		
200	250	14.1					6.5	100		250
	330	14.2						130		330
	400	14.3						150		400
100	120	14.0	0.75	MCHV	8	50	100	120	Quotation	
	320	15.2					100	320		
	350	12.2					130	350		
	250	7.4					150	250		
	500	14.8					150	500		
	300	7.3					180	300		
	450	10.9					180	450		
	620	15.0					200	620		
	500	10.8					200	500		
	690	14.9					200	690		
800	17.2	250	800							
900	15.3	250	900							

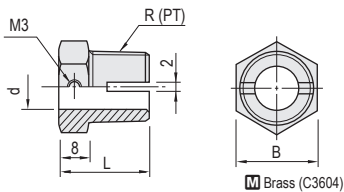
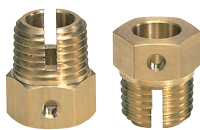
④ Coupling nipples...MCHB

V (Voltage)	W (Wattage)	W/cm ² (Watt density)	Lead nominal cross-sectional area (mm ² ,sq)	Part Number Type	D	L	V	W	Unit Price 1~9 pcs
100	350	13.3	0.75	MCHV	10	100	100	350	Quotation
	250	12.4					80	250	
	300	11.4					100	300	
	400	15.2					100	400	
	550	13.1					150	550	
	630	15.0					150	630	
200	750	17.7	1.25	MCHV	10	180	750	750	Quotation
	750	14.6					180	750	
	450	7.6					200	450	
	650	11.3					200	650	
	860	14.9					200	860	
	1000	17.2					200	1000	
	550	7.5					250	550	
	880	12.0					250	880	
	1100	15.0					250	1100	
	1300	17.6					300	1300	
	1100	12.3					100	1100	
	480	15.2					100	480	
	650	12.9					150	650	
	1050	15.1					120	1050	
1300	14.7	250	1300						
1500	16.9	250	1500						
890	15.1	140	890						

④ Coupling nipples...MCHB

Bolt for Cartridge Heater

MCHB



Brass (C3604)

d	B	L	R(PT)	Part Number Type	No.	Unit Price 1~9 pcs
6.1	14	18	1/8	MCHB	6	Quotation
6.6	17		1/4		6.5	
8.1	17		8			
10.1	21	20	3/8		10	
12.1	24	25	1/2		12	
12.7					12.6	
14.1				14		
16.1	28	27	3/4	16		



Order

Part Number — L — V — W
 MCHV10 — 100 — V200 — W400
 MCHB8



Days to Ship

Quotation

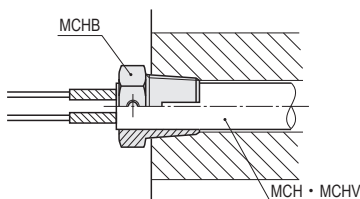


Price

Quotation



Example



- Having a tapered thread that is slightly shallower than standard length, it enables fastening a cartridge heater easier by tightening.
- If the tightening is weak, use M3 bolts to fix the heater bolt and heater firmly from the side surface.

④ Do not use with a heater of watt density over 15W/cm².