

Rods

Material: S45C, SS400, SCM435

Rods		M	S
O.D. Selectable	O.D. Configurable	Material	Surface Treatment
RDOC	FRDOC	S45C Equivalent (RDOC) / S45C (FRDOC)	-
RDOB	-	S45C Equivalent	Black Oxide
RDOM	-	-	Electroless Nickel Plating
RDSS	-	Steel for General Structure	-
RDSSB	-	-	Black Oxide
RDSSM	-	-	Electroless Nickel Plating
RD435S	-	SCM435	-

C Dimension or More or Less			L Dimension Tolerance or More or Less			D Dimension Tolerance or More or Less		
D3	D16	C	10	30	±0.2	3	30	0 -0.1
D17	D60	1.0	31	120	±0.3	35	60	0 -0.2
			121	400	±0.5			
			401	1000	±0.8			

Rods (O.D. Selectable)

Part Number	D	L
Type	1mm increment	1mm increment
RDOC RDOB RDOM RDSS RDSSB RDSSM RD435S (D4~20)	3	
	4	10~250
	5	
	6	
	8	10~500
	10	
	12	
	13	10~750
	15	
	16	10~900
RDOC RDOB	20	20~1000
	25	
	30	
	35	30~1000
RDOC	40	
	50	
	60	30~1000



Ordering Example

Rods (O.D. Selectable)

Part Number - L
RDOC15 - 700

Rods (O.D. Configurable)

Part Number - D - L
FRDOC - D11 - L113

Rods (O.D. Configurable)

Part Number	D	L
	1mm increment	1mm increment
FRDOC	6~10	10~500
	11~15	10~750
	16~17	10~900
	18~30	20~1000



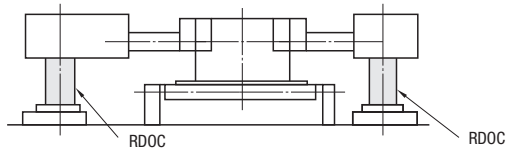
Alterations

Part Number - L - (MC, WMC)
RDOC20 - 535 - MC8

Alterations	One End Tapped	Both Ends Tapped
	MC	WMC
Code	MC	WMC
Spec.	Adds a tap on one end. [Ordering Code] MC8 ④ 6 ≤ D ≤ 30 ④ When L ≤ Mx2, the tap goes through.	Adds taps on both ends. [Ordering Code] WMC12 ④ 6 ≤ D ≤ 30 ④ When L ≤ Mx4, the tap goes through.
	D MC (Selection Range)	D WMC (Selection Range)
	6, 7 3	6, 7 3
	8, 9 3, 4	8, 9 3, 4
	10, 11 3, 4, 5	10, 11 3, 4, 5
	12~14 3, 4, 5, 6	12~14 3, 4, 5, 6
	15~19 3, 4, 5, 6, 8	15~19 3, 4, 5, 6, 8
	20~24 3, 4, 5, 6, 8, 10, 12	20~24 3, 4, 5, 6, 8, 10, 12
	25~30 3, 4, 5, 6, 8, 10, 12, 16	25~30 3, 4, 5, 6, 8, 10, 12, 16
	④ When L ≤ Mx4, the pilot hole for tapping may go through.	



Example It can also be used as a post.



Rods (O.D. Selectable)

Part Number	Type	D	Unit Price					
			Min. L - 100	101-200	201-400	401-600	601-800	801-1000
RDOC (S45C)		3						
		4						
		5						
		6						
		8						
		10						
		12						
		13						
		15						
		16						
		18						
		20						
		25						
		30						
		35						
		40						
		50						
		60						
RDOB (S45C)		3						
		4						
		5						
		6						
		8						
		10						
		12						
		13						
		15						
		16						
		18						
		20						
		25						
		30						
		35						
		40						
		50						
		60						
RDOM (S45C)		3						
		4						
		5						
		6						
		8						
		10						
		12						
		13						
		15						
		16						
		18						
		20						
		25						
		30						
		35						
		40						
		50						
		60						
RD435S (SCM435)		3						
		4						
		5						
		6						
		8						
		10						
		12						
		13						
		15						
		16						
		18						
		20						

For maximum L dimension in each D dimension, refer to the specification table shown on the left-hand page.

Part Number	Type	D	Unit Price					
			Min. L - 100	101-200	201-400	401-600	601-800	801-1000
RDSS (SS400)		3						
		4						
		5						
		6						
		8						
		10						
		12						
		13						
		15						
		16						
		18						
		20						
		25						
		30						
RDSSB (SS400)		3						
		4						
		5						
		6						
		8						
		10						
		12						
		13						
		15						
		16						
		18						
		20						
		25						
		30						
RDSSM (SS400)		3						
		4						
		5						
		6						
		8						
		10						
		12						
		13						
		15						
		16						
		18						
		20						
		25						
		30						

Rods (O.D. Configurable)

Part Number	D	Unit Price					
		1mm increment	Min. L - 100	101-200	201-400	401-600	601-800
FRDOC (S45C)		6~10					
		11~15					
		16~19					
		20~24					
		25~27					
		28~30					