

Details of Special Greases / Rail Length (L Dimension) Configurable Type

About Special Greases

The standard grease used in the linear guides can be changed to the following types.

Part Number	Product Name	Main Features
L Type	ET-100K (Made by Kyodo Yushi)	Excels in heat resistance, oxidation stability, adhesion and adhesive power. In addition, splash or leakage is little.
G Type	LG2 (Made by NSK Ltd.)	Special grease for linear guides, ball screws and etc. for clean-room use.

Product Name	Page	Grease Selection	Unit Price
Miniature Linear Guides	P533-P568	L G	Added to the price of Standard Type
Medium/Heavy Load Linear Guide	P569-P572	L G	



Ordering Example
 Part Number - L
 SSEBL10L - 270 (L Type Greased)
 SSEBL10G - 270 (G Type Greased)
 Please add L or G after the part number of Regular Type when placing an order.



Alterations
 Part Number - L
 SSEBL10L - 270

Confirm the details of alterations on the page shown in the table on the left.
 Not applicable to C-VALUE Products.

Add the unit price in the above table to the unit price of applicable standard product.

<Price Calculation Example> SSEBL10L-270 (Standard Preload Type)

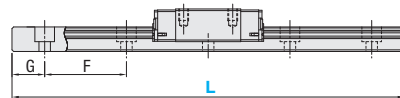
$$(\text{Standard Type Unit Price}) + (\text{Additional Unit Price in the Table}) = (\text{Total})$$

Details of the Dimensions about L Dimension Configurable Type

Both ends of the rail are evenly cut for L Configurable. For the number of rail mounting holes (M) in that case, see the table below. In addition, G dimensions are calculated with the formula below.

$$G = \frac{L - (M - 1) \times F}{2}$$

Example: For SSEB13-168, $G = \frac{168 - (7 - 1) \times 25}{2} = 9$ (mm)



Miniature Linear Guides - Standard Rails

H	6, 8	10	13	16	20	Number of Mounting Holes M
L	26~35	36~47	46~57	71~87	101~139	2
L	36~50	48~67	58~82	88~127	140~199	3
L	51~65	68~87	83~107	128~167	200~259	4
L	66~80	88~107	108~132	168~207	260~319	5
L	81~95	108~127	133~157	208~247	320~379	6
L	96~110	128~147	158~182	248~287	380~439	7
L	111~125	148~167	183~207	288~327	440~499	8
L	126~129	168~187	208~232	328~367	500~559	9
L	-	188~207	233~257	368~407	560~619	10
L	-	208~227	258~282	408~447	620~679	11
L	-	228~247	283~307	448~487	680~699	12
L	-	248~267	308~332	488~527	-	13
L	-	268~274	333~357	528~567	-	14
L	-	-	358~382	568~607	-	15
L	-	-	383~407	608~647	-	16
L	-	-	408~432	648~669	-	17
L	-	-	433~457	-	-	18
L	-	-	458~469	-	-	19
F	15	20	25	40	60	

Miniature Type - Wide Rails

H	6, 5	9	12	14	16	Number of Mounting Holes M
L	-	51~67	51~67	71~89	71~89	2
L	51~67	68~97	68~97	90~129	90~129	3
L	68~87	98~127	98~127	130~169	130~169	4
L	88~107	128~157	128~157	170~209	170~209	5
L	108~127	158~187	158~187	210~249	210~249	6
L	128~129	188~217	188~217	250~289	250~289	7
L	-	218~247	218~247	290~329	290~329	8
L	-	248~277	248~277	330~369	330~369	9
L	-	278~289	278~289	370~409	370~409	10
L	-	-	-	410~449	410~449	11
L	-	-	-	450~489	450~489	12
L	-	-	-	490~529	490~529	13
L	-	-	-	530~569	530~569	14
L	-	-	-	570~609	570~609	15
L	-	-	-	610~649	610~649	16
L	-	-	-	650~669	650~669	17
F	20	30	40			

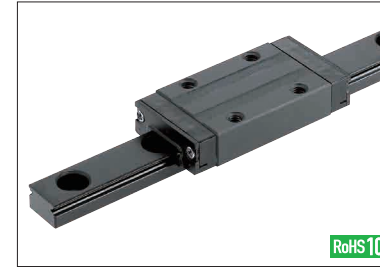
M (number of mounting holes) for H16 type will be Mx2 since there are two rows of mounting holes.
 Min. length of L dimension varies depending on the number of blocks. See each product page for details.

Medium/Heavy Load Type

H	24, 28*1	28*2, 30	33, 36, 40	42, 45	Number of Mounting Holes M
L	101~131	-	-	-	2
L	132~191	160~199	160~201	201~279	3
L	192~251	200~259	202~261	281~343	4
L	252~311	260~319	262~321	344~423	5
L	312~371	320~379	322~381	424~503	6
L	372~431	380~439	382~441	504~583	7
L	432~491	440~499	442~501	584~663	8
L	492~551	500~559	502~561	664~743	9
L	552~611	560~619	562~621	744~823	10
L	612~671	620~679	622~681	824~903	11
L	672~731	680~739	682~741	904~983	12
L	732~791	740~799	742~801	984~1063	13
L	792~851	800~859	802~861	1064~1143	14
L	852~911	860~919	862~921	1144~1223	15
L	912~971	920~979	922~981	1224~1303	16
L	972~1031	980~1039	982~1041	1304~1383	17
L	1032~1091	1040~1099	1042~1101	1384~1463	18
L	1092~1151	1100~1159	1102~1161	1464~1543	19
L	1152~1211	1160~1219	1162~1221	1544~1623	20
L	1212~1271	1220~1279	1222~1281	1624~1703	21
L	1272~1331	1280~1339	1282~1341	1704~1783	22
L	1332~1391	1340~1399	1342~1401	1784~1863	23
L	1392~1451	1400~1459	1402~1461	1864~1943	24
L	1452~1511	1460~1519	1462~1521	1944~1959	25
L	1512~1571	1520~1579	1522~1581	-	26
L	1572~1631	1580~1639	1582~1641	-	27
L	1632~1691	1640~1699	1642~1701	-	28
L	1692~1751	1700~1759	1702~1761	-	29
L	1752~1811	1760~1819	1762~1821	-	30
L	1812~1871	1820~1879	1822~1881	-	31
L	1872~1931	1880~1939	1882~1941	-	32
L	1932~1959	1940~1959	1942~1959	-	33
F		60		80	

Min. length of L dimension varies depending on the number of blocks. See each product page for details.
 *1. C-VALUE Super Heavy Load Applicable Dimension (P583)
 *2. Medium/Heavy Load Applicable Dimension (P569~P580)

Linear Guides with Low Temperature Black Chrome Plating



Low Temperature Black Chrome Plated Linear Guide Features

Low temperature black chrome plating on linear guides is 5um of fluoropolymer layer chemically deposited as black film on rails and blocks, and it has long-lasting rust prevention effect. The coating layer is immune to cracking from light radi strike-folding and does not flake under repeated bending. Any superficial coating particles that may come off the rolling contact surfaces are mixed in with the grease and remain its lubricity. (Note) Surface treatment will not be applied to mounting holes of rails and blocks of low temperature black chrome plated linear guides.

Description of Low Temperature Black Chrome Plated Model Type:

For low temperature black chrome plated products, change the first letter of part numbers "S" to "R".

(Ex.)	[Standard]	[Low Temperature Black Chrome Plated Products]
	SSEB16-270	RSEB16-270
	SXR24-520	RXR24-520
	SSVR33-700	RSVR33-700

The precision grade and standard type of the existing products and C-VALUE products are not available. Only the high grade type of the existing products is available.
 Cannot be combined with Alteration WC (Parallel Use of 2 Rails).

Rail	Block Length	Block Type	Catalog Page	Stainless Steel			
				1 block		2 blocks	
				Selectable	Configurable	Selectable	Configurable
Standard	Standard	Standard	P533	RSEB	RSEBL	RSE2B	RSE2BL
				RSELB	RSELBL	RSEL2B	RSEL2BL
Wide	Standard	Standard	P555	RSEBW	RSEBWL	RSE2BW	RSE2BWL
				RSELBW	RSELBWL	RSEL2BW	RSEL2BWL

The high grade type of the existing products and C-VALUE products are not available. Only the standard type of the existing products is available.
 Cannot be combined with Alteration WC (Parallel Use of 2 Rails).

Rail	Block Length	Block Type	Catalog Page	Carbon Steel				Stainless Steel			
				1 block		2 blocks		1 block		2 blocks	
				Selectable	Configurable	Selectable	Configurable	Selectable	Configurable	Selectable	Configurable
Standard	Medium Load	Standard	P569, 589	RVR	RVRN	RV2R	RV2RN	RSVR	RSVRN	RSV2R	RSV2RN
		With Dowel Holes	P597	RVRN	RVRNL	RV2RN	RV2RNL	-	-	-	-
		Wide (Through Holes)	P569	RVW	RVWL	RV2W	RV2WL	-	-	-	-
		Wide (Tapped Holes)	P569	RVWT	RVWTL	RV2WT	RV2WTL	-	-	-	-
		Standard	P575, 589	RXR	RXRN	RX2R	RX2RN	RSXR	RSXRN	RSX2R	RSX2RN
		With Dowel Holes	P597	RXRN	RXRNL	RX2RN	RX2RNL	-	-	-	-
Standard	Heavy Load	Wide (Through Holes)	P575	RXW	RXWL	RX2W	RX2WL	-	-	-	-
		Wide (Tapped Holes)	P575	RXWT	RXWTL	RX2WT	RX2WTL	-	-	-	-

Price of Low Temperature Black Chrome Plating Surface Treatment (For low temperature black chrome plated products, add the prices below for surface treatment to the unit price of Linear Guides.)

Part Number	Type	H	L	Unit Price		Part Number	Type	H	L	Unit Price		Part Number	Type	H	L	Unit Price			
				Block 1 pc.	Block 2 pcs.					Block 1 pc.	Block 2 pcs.					Block 1 pc.	Block 2 pcs.		
Miniature Linear Guides - Standard Rails	Page P533, P539	8	40-55			9	Miniature Type - Wide Rails	9	50-110			Medium/Heavy Load Type	Page P569, P575, P589, P597	24	100-220				
			56-70						111-140						221-280				
			71-85						141-170						281-340				
			86-100						171-200						341-400				
			101-115						201-230						401-460				
			116-130						231-260						461-520				
			35-75						261-290						521-580				
			76-95						50-110						581-640				
		10	10	10	96-115			14	14	14	111-140			28	28	28	160-280		
					116-135						171-200						281-340		
					136-155						201-230						341-400		
					156-175						231-260						401-460		
					176-195						261-290						461-520		
					196-215						70-150						521-580		
					216-235						151-190						581-640		
					236-255						191-230						641-700		
13	13	13	256-275			16	16	16	271-310			33	33	33	701-760				
			45-95						311-350						761-820				
			96-120						351-390						821-880				
			121-145						391-430						881-940				
			146-170						431-470						941-1000				
			171-195						70-150						160-280				
			196-220						151-190						281-340				
			221-245						191-230						341-400				
16	16	16	246-270			20	20	20	271-295			20	20	20	401-460				
			296-320						311-350						461-520				
			321-345						351-390						521-580				
			346-370						391-430						581-640				
			371-395						431-470						641-700				
			396-420						471-510						701-760				
			421-445						511-550						761-820				
			446-470						551-590						821-880				
20	20	20	471-510			24	24	24	511-550			24	24	24	881-940				
			511-550						551-590						941-1000				
			551-590						591-630						160-280				
			591-630						631-670						281-340				
			631-670						70-150						341-400				
			100-200						151-190						401-460				
			201-220						191-230						461-520				
			221-280						231-270						521-580				

Not applicable to H6.5.

For H24, 28, or 33, L is available up to 1000mm.