

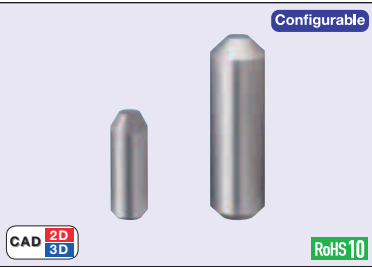
Locating Pins Straight Round Type

- Standard Type -

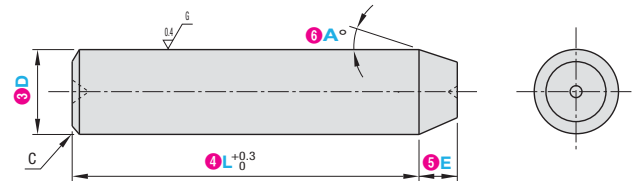
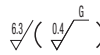
■ Features: Straight Type with taper. Select tolerances according to mounting side or mating side. Dimensions are freely configurable. Makes hole machining easy since the diameters of mounting side and insertion side holes are the same.

When ordering, select Part Number and Values from Selection Steps ①~⑥.

Ordering Example: Part Number (①Type · ②D Tolerance · ③D) - (④L) - (⑤E) - (⑥A)
 LPSTAM6 - L14.0 - E2.5 - A30



Type	Material	Surface Treatment	Hardness
LPSTA	SKS3 Equivalent	-	Treated Hardness: 60 ~ 63HRC
GLPSTA	SKS3 Equivalent	Hard Chrome Plating Plating Thickness: 3μm or More	Treated Hardness: 60 ~ 63HRC Plating Hardness: 750HV ~
CLPSTA	SUS440C Equivalent	-	Treated Hardness: 50 ~ 55HRC
SLPSTA	SUS304 Equivalent	-	-



Ⓜ SUS440C Equivalent has an identification groove on D part.

D Dim. Tolerance Selectable

D	D dim. Tolerance			
	M	P	G	H
3	+0.008	+0.012	-0.002	0
	+0.002	+0.006	-0.008	-0.010
4-6	+0.012	+0.020	-0.004	0
	+0.004	+0.012	-0.012	-0.012
8-10	+0.015	+0.024	-0.005	0
	+0.006	+0.015	-0.014	-0.015

①Type	Part Number		④L	⑤E	⑥A	C
	②D Tolerance	③D				
LPSTA GLPSTA CLPSTA SLPSTA	M P G H	3	3.0~20.0	0.5~10.0	15 30 45 60	0.5
		4				1
		5				1
		6				1
		8				1.5
10	2					

Alterations	Alterations	Tapping	Insertion Guide	Air Vent	Unilateral Tolerance Change
	Spec.	For detail of machining and Ordering Code, refer to the WEB Catalog.			

MISUMI C-VALUE [Economy Type] Locating Pins Straight Round Type

- Standard Type -

■ Features: Features: Tolerance and dimension ranges are narrowed down to realize short delivery time and low costs.

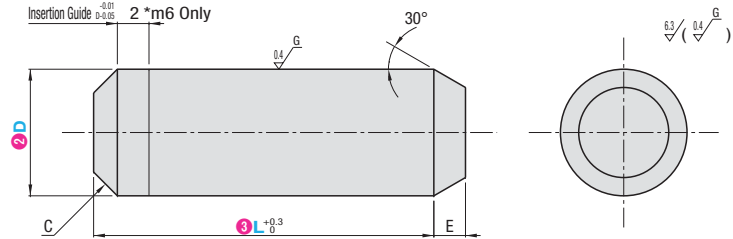
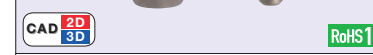
When ordering, select Part Number and Values from Selection Steps ①~③.

Ordering Example: Part Number (①Type · ②D) - (③L)
 CUM6 - 15



Type		Material	Hardness
D dim. m6	D dim. g6		
CUM	CUG	SUS440C	Treated Hardness: 55 ~ 60HRC

Ⓜ Hardness of SUS440C is different from SUS440C equivalent hardness (50~55HRC) on left page.



D Dim. Tolerance

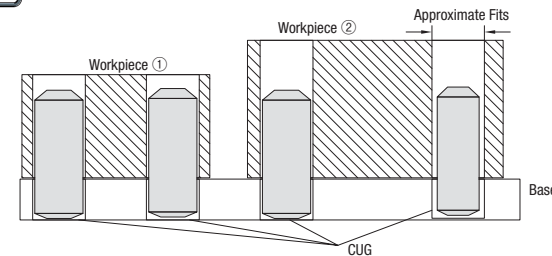
D	m6	g6
3	+0.008 +0.002	-0.002 -0.008
4	+0.012	-0.004
5	+0.004	-0.012
6	+0.015	-0.005
8	+0.006	-0.014

Part Number		③L	E	C
①TYPE	②D			
<m6> CUM	<g6> CUG	3	10	0.5
		4	10	0.5
		5	10	0.5
		6	10	1
		8	20	1

Advantages of C-VALUE Products

	Product on Left Page (Quality Products)	Product on this Page (C-VALUE Products)
SPEC Dimension	Configurable type	"Easy selection" by reduced configuration parameters
Alterations Others	With Alterations (Refer to the WEB)	"Insertion Guide" alterations is Standard (m6 only)

Example



When the fits of workpiece holes and pins can be approximate, cost reduction can be realized by using low cost straight pins of the same diameter on multiple locations.

Shear strength test

	Material	Heat Treated Hardness (HRC)	Break Point (kN)
①	SUS440C	55~58	59.87
②	SKD11	60~63	59.17
③	SUJ2	55~58	66.69
④	S45C	45~50	39.4
⑤	SKS3 Equivalent	60~63	67.34

This product ① is equivalent of SKD11 strength