

Miniature Linear Guides

-Long Blocks / Interchangeable, Slight Clearance-

Linear Guide Related Products			
Position-keeping Parts	Rails Height Adjusting Blocks	Blocks Fall-off Prevention Parts	Blocks / Rails Fixing Parts
P581~ P588			

CAD Data Folder Name: 07_Linear_Guides

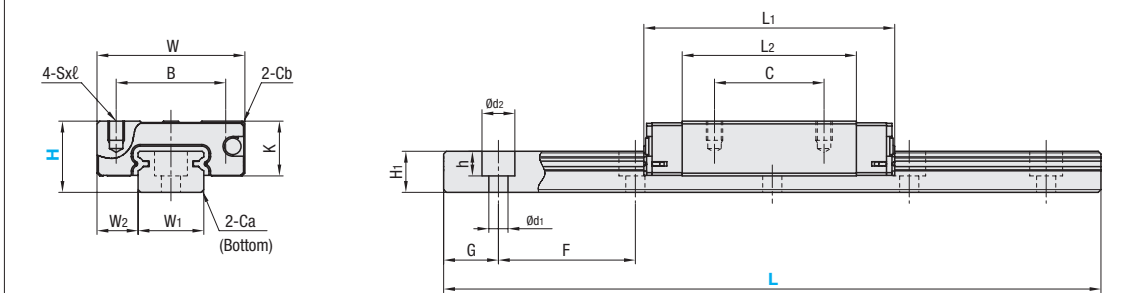
Features: Long Block Type of industry standard specifications. Higher load ratings and allowable moments than standard blocks.



Material Hardness	Type		L Dimensions	Blocks Quantity
	Standard Grade	Sets		
STKM (Alloy Steel including SCM) 58HRC~	SELBZ	SZLB	Selectable	1
	SEL2BZ		2	
	SELBLZ		1	
	SEL2BLZ		2	
Stainless Steel (SUS440C Equivalent Material) 56HRC~	SSELBZ	SSZLB	Selectable	1
	SSEL2BZ		2	
	SSELBLZ		1	
	SSEL2BLZ		2	

Heat Resistant Temperature: -20~80°C

Blocks and rails can be used interchangeably with Interchangeable-Slight Clearance Type.



Precautions for Use

- Blocks are equipped with retainers (wire) to prevent balls from falling out. Refer to P501
- Straight grooves are provided on datum planes. Be sure to match the datum lines when using.
- Rails cannot be connected to be extended.
- Running parallelism is the value measured after the rail is mounted.

Accessories

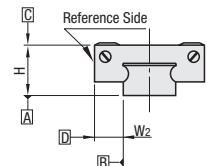
- H8 comes with cap screws (M2x6).
- Others:
 - For G dimensions of L Dimension Configurable Type, refer to P507
 - Lithium soap based grease (Multemp Grease PS2 by Kyodo Yushi Co., Ltd.) is filled.
 - For life calculations, use our free calculation software from http://download.misumi.jp/mol/fa_soft.html (in Japanese only). Refer to P503.

Part Number	Type	Block Dimensions				Guide Rail Dimensions											
		H	W ±0.05	L1	B	C	Sxℓ	L2	K	Cb	W1 ±0.005	W2	H1	Ca	Counterbored Holes d1xd2xh	F	G
SELBZ	STKM (1 Block)	8	17	32	12	13	M2x2.5	22	6.5	0.3	7	5	4.7	0.3	2.4x4.2x3	15	5
SEL2BZ	(2 Blocks)	10	20	40	15	16	M3x3	29	7.8	0.3	9	5.5	5.5	0.3	3.5x6x3.5	20	7.5
SSELBZ	Stainless Steel (1 Block)	13	27	45.8	20	20	M3x3.5	31.8	10	0.5	12	7.5	7.5	0.5	3.5x6x4.5	25	10
SSEL2BZ	(2 Blocks)	16	32	58.3	25	25	M3x4	43.3	12	0.5	15	8.5	9.5	0.5	3.5x6x4.5	40	15
SSELBLZ	Blocks	20	40	67.7	30	30	M4x6	52.3	15	0.5	20	10	11	0.5	6x9.5x5.5	60	20

kgf~N×0.101972

H	Basic Load Rating		Allowable Static Moment			Mass	
	C (Dynamic) kN	Co (Static) kN	MA N·m	Mb N·m	Mc N·m	Blocks kg	Guide Rails kg/m
8	1.6	2.4	7.5	7.5	9.0	0.016	0.19
10	2.2	3.7	12.3	12.3	13.0	0.03	0.31
13	3.5	5.3	24.5	26.4	32.3	0.06	0.61
16	5.8	8.7	57.8	62.6	67.6	0.10	1.02
20	7.2	13.5	80.7	80.7	138.2	0.18	1.65

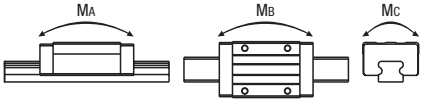
Preload and Accuracy Standards



Radial Clearance (µm)	
Interchangeable-Slight Clearance	0~15

Dimension Precision (µm)		Standard Grade
Height H Tolerance	±20	
Height H Pair Variation	40	
Width W2 Tolerance	±25	
Width W2 Pair Variation	40	

Running Parallelism of surf. C against surf. A
Running Parallelism of surf. D against surf. B
Standard Class (Interchangeable-Slight Clearance) meets the above values even after the block is replaced.



Order Example
Part Number - L
SELBZ10 - 275
SELBZ10L - 75 (L Type Greased)
SELBZ10G - 75 (G Type Greased)
Alternative grease types available.
For Delivery, Price and Performance, refer to P507



Delivery 7 Days
Express A 370 Baht / piece P.88
A flat charge of 990 Baht for 3 or more identical pieces.



Volume Discount Rate (Round up to the Baht.) P.87

Quantity	1~6	7 or 8	9 or 10	11~15
Discount Rate	Unit Price	5%	10%	18%

H	Selectable L	Unit Price					
		Sets				Blocks	
		1 Block	2 Blocks	SZLB	SSZLB		
8	40	827	996	-	-	718	868
	55	871	1,047	-	-		
	70	913	1,098	-	-		
	85	954	1,152	1,516	1,825		
	100	1,021	1,229	1,516	1,825		
	115	1,040	1,254	1,535	1,851		
	130	1,085	1,305	1,583	1,905		
	55	961	1,165	-	-		
	75	999	1,210	-	-		
	95	1,050	1,270	1,678	2,029		
	115	1,104	1,337	1,678	2,029		
	135	1,158	1,426	1,733	2,122		
	155	1,216	1,468	1,787	2,163		
	175	1,280	1,548	1,851	2,243		
	195	1,353	1,631	1,921	2,323		
215	1,420	1,710	1,994	2,409			
235	1,497	1,806	2,071	2,501			
255	1,573	1,899	2,147	2,594			
275	1,656	1,994	2,227	2,686			
70	1,082	1,292	-	-			
95	1,139	1,369	-	-			
120	1,200	1,442	1,825	2,198			
145	1,257	1,516	1,883	2,269			
170	1,318	1,583	1,943	2,336			
195	1,379	1,659	2,007	2,415			
220	1,442	1,733	2,071	2,489			
245	1,509	1,812	2,138	2,572			
270	1,586	1,905	2,214	2,658			
295	1,659	1,994	2,285	2,747			
320	1,745	2,096	2,371	2,849			
345	1,828	2,198	2,457	2,951			
370	1,946	2,336	2,575	3,092			
395	2,036	2,447	2,664	3,203			
420	2,147	2,578	2,773	3,334			
445	2,253	2,709	2,878	3,462			
470	2,352	2,817	2,977	3,573			
110	1,261	1,522	-	-			
150	1,337	1,608	2,013	2,425			
190	1,407	1,694	2,084	2,508			
230	1,500	1,800	2,176	2,613			
270	1,608	1,937	2,288	2,750			
310	1,752	2,103	2,428	2,916			
350	1,863	2,237	2,537	3,050			
390	1,953	2,348	2,629	3,159			
430	2,068	2,486	2,741	3,296			
470	2,208	2,651	2,881	3,462			
510	2,329	2,801	3,005	3,615			
550	2,470	2,967	3,146	3,781			
590	2,651	3,187	3,328	4,001			
630	2,824	3,391	3,497	4,205			
670	3,002	3,599	3,675	4,412			
160	1,911	2,300	-	-			
220	2,144	2,572	3,108	3,733			
280	2,300	2,769	3,267	3,934			
340	2,664	3,200	3,628	4,361			
400	2,792	3,356	3,758	4,514			
460	3,155	3,793	4,119	4,951			
520	3,334	4,004	4,297	5,168			
580	3,793	4,559	4,757	5,720			
640	4,033	4,849	4,999	6,010			
700	4,291	5,146	5,254	6,307			



Alterations
Part Number - L - (MC / RLC / LLC)
SEL2BZ16 - 430 - MC - RLC
MC only 9 Days

Alterations	Code	Spec.	Price Adder
Female Thread Holes	MC	Changes the rail mounting hole from counterbored holes to tapped holes. Express Service is not available.	Free of charge
Rail Ends Cut	Left End Cut LLC Right End Cut RLC	Cuts rail ends. Ordering Code: LLC H L Cut N 10 2.5 5 13 5 5 16 10 5 20 15 5	160 160

Rail is cut with the product ID facing out (datum on other side).
Applicable to Selectable Type only.
Overall length will be shorter by cutting.
Not applicable to H8.

H	L Specified (1mm Increment)	Unit Price			
		1 Block	2 Blocks		
8	41-54	1,095	1,302	-	-
	56-69	1,136	1,353	-	-
	71-84	1,178	1,407	-	-
	86-99	1,245	1,484	1,739	2,080
	101-114	1,264	1,509	1,758	2,106
	116-129	1,308	1,560	1,806	2,160
	56-74	1,254	1,497	-	-
	76-94	1,305	1,557	-	-
	96-114	1,359	1,624	1,988	2,409
	116-134	1,414	1,714	1,988	2,409
	136-154	1,471	1,755	2,042	2,450
	156-174	1,535	1,835	2,106	2,530
	176-194	1,608	1,918	2,176	2,610
	196-214	1,675	1,997	2,249	2,696
	216-234	1,752	2,093	2,326	2,789
236-254	1,828	2,186	2,403	2,881	
256-274	1,911	2,281	2,482	2,974	
71-94	1,426	1,688	-	-	
96-119	1,487	1,761	-	-	
121-144	1,544	1,835	2,170	2,588	
146-169	1,605	1,902	2,230	2,655	
171-194	1,666	1,978	2,294	2,734	
196-219	1,729	2,052	2,358	2,808	
221-244	1,796	2,131	2,425	2,891	
246-269	1,873	2,224	2,501	2,977	
271-294	1,946	2,313	2,572	3,066	
296-319	2,033	2,415	2,658	3,168	
321-344	2,115	2,517	2,744	3,270	
346-369	2,233	2,655	2,862	3,411	
371-394	2,323	2,766	2,951	3,522	
396-419	2,434	2,897	3,060	3,653	
421-444	2,540	3,028	3,165	3,781	
446-469	2,639	3,136	3,264	3,892	
111-149	1,656	1,959	-	-	
151-189	1,726	2,045	2,403	2,859	
191-229	1,819	2,151	2,495	2,964	
231-269	1,927	2,288	2,607	3,101	
271-309	2,071	2,454	2,747	3,267	
311-349	2,182	2,588	2,856	3,401	
351-389	2,272	2,699	2,948	3,509	
391-429	2,387	2,836	3,060	3,647	
431-469	2,527	3,002	3,200	3,813	
471-509	2,649	3,152	3,324	3,966	
511-549	2,789	3,318	3,465	4,132	
551-589	2,970	3,538	3,647	4,352	
591-629	3,143	3,742	3,816	4,556	
631-669	3,321	3,950	3,994	4,763	
161-219	2,495	2,954	-	-	
221-279	2,651	3,152	3,618	4,317	
281-339	3,015	3,583	3,978	4,744	
341-399	3,143	3,739	4,109	4,897	
401-459	3,506	4,176	4,470	5,334	
461-519	3,685	4,387	4,648	5,551	
521-579	4,144	4,942	5,108	6,103	
581-639	4,384	5,232	5,350	6,393	
641-699	4,642	5,529	5,605	6,690	

For rail unit price for Interchangeable-Slight Clearance Type, see P516