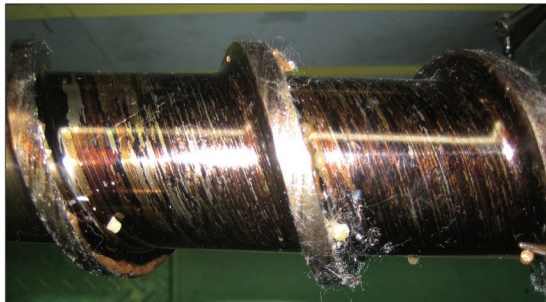
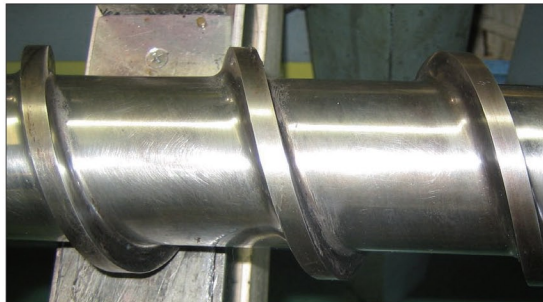


# COPPER GAUZE

## ■Example of Wax for Screw Maintenance Effectiveness (M-HGMX)



Before



After

After using Wax for Screw Maintenance (M-HGMX), you can notice that the caked resin was removed.

## ■Caution

- Cannot be used with the screw that is completely cooled off.
- Since this is an operation when the screw is in high temperature, please wear equipment such as Gloves for Injection to prevent getting burned.

## ■Usage Used to accommodate the removal of caked resin from the screw.

### ■Copper Gauze (for Screw Maintenance)

M-RCG



Material: Copper

## ■Specifications

- Gauze made from copper mesh, reducing the risk of damaging the molding machine screw or cylinder to minimum.
- Available in 4 types of length.

Width (mm)	Part Number		Unit Price
	Type	Length (m)	1~5 Rolls
13	M-RCG	2	Quotation
		5	
		10	
		30	

⚠ Please check with our WOS for the purchase order that exceeds the displayed quantity.



Order

Part Number

M-RCG-5



Days  
To Ship

Quotation



Example



## ■Features

- Copper Gauze can be wrapped around the screw in a larger contact area, comparing to brush, resulting in more effectiveness. Furthermore, the Copper Gauze can be used during the polishing process, after applying Wax for Screw Maintenance (M-HGMX), to ensure that the Wax is applied thoroughly.

## ■How to use

- ① Wrap the gauze around the screw where resins cake up, then polish it.
- ② Used in 2 or 3 folds to increase the efficiency.