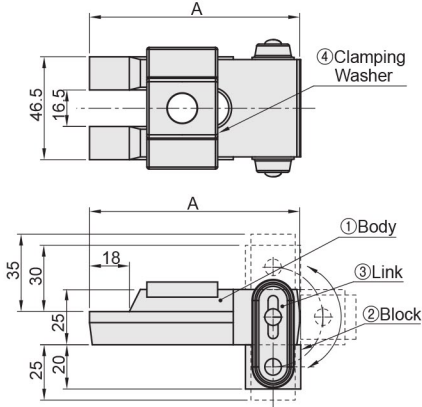


CLAMP FOR INJECTION MOLDING

■Usage Fitting for mold installation to a molding machine.

■CLAMP FOR INJECTION MOLDING

M-CE



No.	Part Name	M Material	S Surface Treatment
①	Body	S45C	Alkaline Blackening
②	Block	SS41	
③	Link	SPCC	
④	Clamping Washer	S45C	

A Fittings (8 Pieces per set)
Hex Bolts / Washers

Bolt Size (8 Pieces)	Dimension	Block Height (mm)	Applicable Mold Thickness (mm)	Reference Tightening Torque (N•m)	Part Number (8 Pieces Set)	Unit Price
	A					1~3 Set
M12×80	95	20×25	20,25,30,35	110	M-CE12-95	Quotation
M16×90				286	M-CE16-95	
	130			286	M-CE16-130	



Order

Part Number

M-CE12-95

M-CE16-95

M-CE16-130

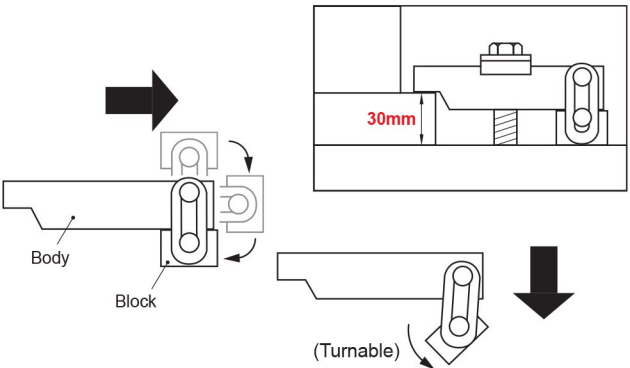
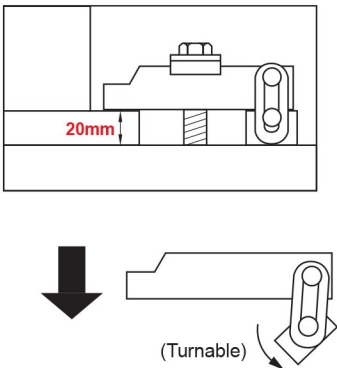


Days
To Ship

Quotation



Example



■Features

- Capable of height control in 4 levels. Height control can easily be done by just turning the block.
- Durable with long life service due to the clamp's fully forged body structure.