

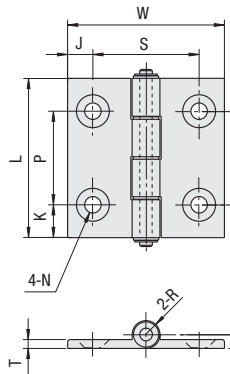
Aluminum Hinges / Aluminum Hinges for Different Extrusion Sizes

Aluminum Hinges with Tabs / Aluminum Hinges with Slotted Holes

Aluminum Hinges
Aluminum Hinges for
Different Extrusion Sizes



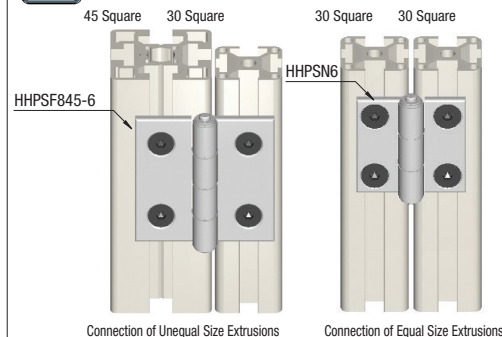
HHPSN (Clear Anodize)
HHPBSN (Black Anodize)
HHPSF (For Different Extrusion Sizes: Clear Anodize)



M Material: A6063S-T5 Bushing: Polyacetal
S Surface Treatment: Anodize



Example

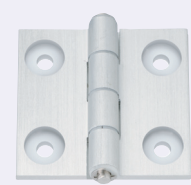


Connection of Unequal Size Extrusions Connection of Equal Size Extrusions
● Hinges for Different Extrusion Sizes
HHPSF 6-5: Mounts 20 SQ. (6mm W slot) extrusion on 30 SQ. extrusion (8mm W slot).
HHPSF 8-6: Mounts 30 SQ. (8mm W slot) extrusion on 40 SQ. extrusion (10mm W slot).
HHPSF845-5: Mounts 20 SQ. (6mm W slot) extrusion on 45 SQ. extrusion (10mm W slot).
HHPSF 8-5: Mounts 20 SQ. (6mm W slot) extrusion on 40 SQ. extrusion (10mm W slot).
HHPSF845-6: Mounts 30 SQ. (8mm W slot) extrusion on 45 SQ. extrusion (10mm W slot).
When mounting the hinges on panels, Hinge Nuts are recommended on P811.

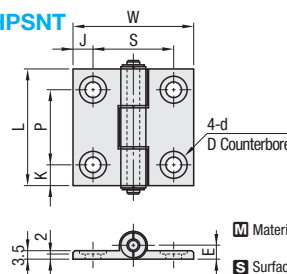
Part Number	* Allowable Load		Mass g	L	W	K	P	J	S	N		T	E	R	Screw, Nut			Clear Anodize Unit Price 1-8 pc(s).	Black Anodize Unit Price 1-8 pc(s).	
	Type	No.								kg	N				Through	Countersink	Screw			Quantity
HHPSN HHPBSN (Black Anodize)	5	10	98	22	47	36	11	25	7.5	21	5.5	11	3.5	5	5	Flat Head Screw 5-8	HNTT5-5	4		
	6			30	48	8.5	30	8	32	6.5	13	5.5		5.5	Flat Head Screw 6-10	HNTT6-6				
	8	48	63	62	13	37	10	42	Flat Head Screw 6-12				HNTT8-6							
	8-45	15	147	70	80	10	43	16.5	47	4.5	Flat Head Screw 6-15									
HHPSF (For Different Extrusion Sizes)	6-5	10	98	33	47	44.75	8.5	30	10.75	26.5	5.5	11	3.5	5.5	5.5	Flat Head Screw 5-8	2 HNTT5-5	2	-	-
	8-5	10	98	43	63	54.25	13	37	15.25	31.5	6.5	13	3.5	5.5	5.5	Flat Head Screw 6-10	2 HNTT6-6	2	-	-
											5.5	11				Flat Head Screw 5-8	2 HNTT5-5	2		
											6.5	13				Flat Head Screw 6-10	2 HNTT8-6	2		
	8-5	10	98	43	63	55.5	13	37	14	34	5.5	11	3.5	5.5	5.5	Flat Head Screw 5-8	2 HNTT5-5	2	-	-
											6.5	13				Flat Head Screw 6-10	2 HNTT8-6	2		
	8-6	15	147	48	63	62	13	37	12.5	37	5.5	11	3.5	5.5	5.5	Flat Head Screw 5-8	2 HNTT5-5	2	-	-
											6.5	13				Flat Head Screw 6-10	2 HNTT6-6	2		
8-45	15	147	48	63	62	13	37	11.5	39	6.5	13	3.5	5.5	5.5	Flat Head Screw 6-10	2 HNTT8-6	2	-	-	
										6.5	13				Flat Head Screw 6-12	2 HNTT8-6	2			
8-45	15	147	48	63	62	13	37	11.5	39	6.5	13	3.5	5.5	5.5	Flat Head Screw 6-10	2 HNTT6-6	2	-	-	
										6.5	13				Flat Head Screw 6-15	2 HNTT8-6	2			

* The allowable load is the value when 2 pieces are used.

Aluminum Hinges
Extra Low Head Cap Screw Type



HHPSNT

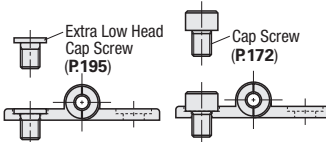


M Material: A6063
Bushings: Polyacetal
S Surface Treatment: Clear Anodize



Example

Normal cap screws can be used for installation.



When mounting the hinges on panels, Hinge Nuts are recommended on P811.

Part Number	Type	No.	* Allowable Load kg N	Mass g	L	W	K	P	J	S	d	D	E	Screw, Nut		Unit Price	
											Through	Countersink		Screw	Nut	1-8 pc(s).	Volume Discount Rate 9-50
HHPSNT	5	5	22	47	36	11	25	7.5	21	5.5	10	5	5.5	CBSA5-6	HNTT5-5	4	
		6	10	98	34	48	8.5	30	8	32	6.5	11	5.5	CBSA6-8	HNTT6-6	4	
		8	49	63	62	13	37	10	42	6.5	11	5.5	5.5	CBSA6-10	HNTT8-6	4	

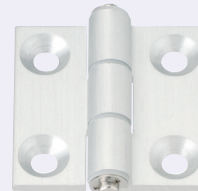
* The allowable load is the value when 2 pieces are used.

Ordering Example
Part Number
HHPSN6

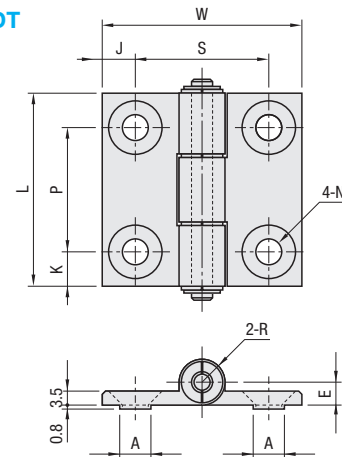
Alterations
Part Number - (SET, SST)
HHPSN6 - SET

Alterations	Code	Spec.	Hinge	No.
Applicable Screw and Nut Set	SET SST (Stainless Steel)	Applicable screws and nuts come in a set. When SST is specified, screws and nuts will be in stainless steel. (When -SET is specified, the material of the Flat Head Screws is SCM435 and their surface treatment is Black Oxide.)	HHPSN	5
			HHPBSN	6
				8 - 45
			HHPSNT	5
				6
				8
			6 - 5	845 - 5
			8 - 5	8 - 6
			845 - 6	

Aluminum Hinges with
Tabs



HHPSDT

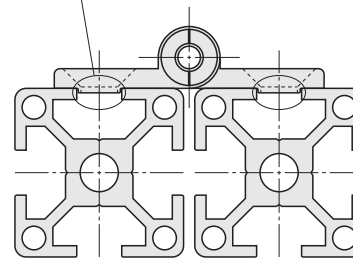


M Material: A6063 Bushing: Polyacetal
S Surface Treatment: Clear Anodize



Example

The protrusions prevent misalignment, making mounting easy.

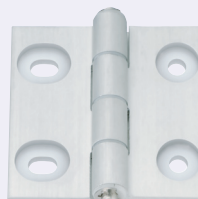


When mounting the hinges on panels, Hinge Nuts are recommended on P811.

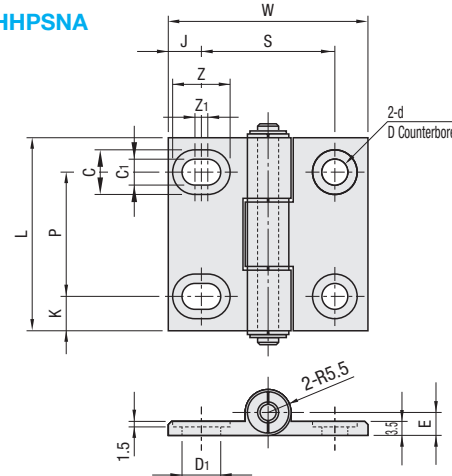
Part Number	Type	No.	* Allowable Load kg N	Mass g	L	W	K	P	J	S	N	T	E	R	Screw, Nut		Unit Price	
											Through	Countersink			Screw	Nut	1-8 pc(s).	Volume Discount Rate 9-50
HHPSDT	5	5	23	47	36	11	25	7.5	21	5.5	11	3.5	5.5	5.5	Flat Head Screw 5-8	HNTT5-5	4	
		6	10	98	48	8.5	30	8	32	6.5	13	5.5	5.5	5.5	Flat Head Screw 6-10	HNTT6-6	4	
		8	51	63	62	13	37	10	42	6.5	13	5.5	5.5	5.5	Flat Head Screw 6-12	HNTT8-6	4	

* The allowable load is the value when 2 pieces are used.

Aluminum Hinges with
Slotted Holes



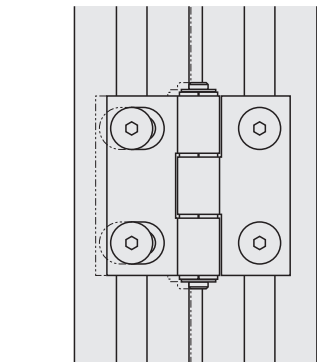
HHPSNA



M Material: A6063 Bushing: Polyacetal
S Surface Treatment: Clear Anodize



Example



Slotted mounting holes make it possible to adjust right and left positions.

When mounting the hinges on panels, Hinge Nuts are recommended on P811.

Part Number		* Allowable Load		Mass	L	W	K	P	J	S	d	D	D ₁	C	C ₁	Z	Z ₁	E	Screw, Nut				Unit Price	Volume Discount Rate
Type	No.	kg	N	g							Through	Countersink							Screw	Quantity	Nut	Quantity	1-8 pc(s).	9-50
HHPSNA	5	10	98	22	47	36	11	25	7.5	21	5.5	10	7	10	5.5	11.5	1.5	5	CBSA5-6	HNTT5-5	4			
	6			32	48	8.5	30	8	32	6.5	11	9.5	11	6.5	14	3	5.5	CBSA6-8	HNTT6-6					
	8			47	63	13	37	10	42	6.5	11	11.5	11	6.5	16	5	5.5	CBSA6-10	HNTT8-6					

* The allowable load is the value when 2 pieces are used.

Ordering Example
Part Number
HHPSDT6
HHPSNA6

Alterations
Part Number - (SET, SST)
HHPSDT6 - SST

Alterations	Code	Spec.	Hinge	No.
Applicable Screw and Nut Set	SET SST (Stainless Steel)	Applicable screws and nuts come in a set. When SST is specified, screws and nuts will be in stainless steel. (When -SET is specified, the material of the Flat Head Screws is SCM435 and their surface treatment is Black Oxide.)	HHPSDT	5
				6
				8
			HHPSNA	5
				6
				8