

# One-Touch Couplings

Similar Products Comparison Points | Use for exact flow rate calculation from effective sectional area, etc. RoHS Compliant.

When ordering, select Part Number and Values from Selection Steps ①~③.

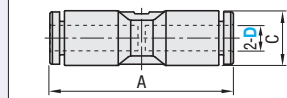
Ordering Example: Part Number (①Type · ②D/No.) - ③Body Color  
 UJDST6 - W  
 USYL10

## Union Straight



CAD 2D 3D RoHS 10

## USSTL



Material PBT (Polybutylene Terephthalate)

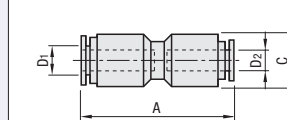
Part Number	A	C	Effective Sectional Area (mm <sup>2</sup> )	Mass (g)
①Type ②D				
USSTL 4	30.2	9	3.2	3.1
6	32	11.2	11.0	4.8
8	40.2	13.6	25.2	8.8
10	40	16.3	38.7	10.6
12	54.8	19.7	44.6	20.9
16	52	25.6	85.0	32.8

## Stepped Diameter Union Straight



CAD 2D 3D RoHS 10

## UJDST



Material PBT (Polybutylene Terephthalate)

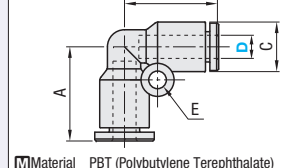
Part Number	D1	D2	A	C	Effective Sectional Area (mm <sup>2</sup> )	Mass (g)
①Type ②No. ③Body Color						
UJDST 4	4	6	36.5	12.5	3.5	6
4-8	4	8	39.5	14.5	4	8
6	6	8	39.5	14.5	10	8
6-10	6	10	45	17.5	10	12
8	8	10	45	17.5	22	12
10	10	12	47.5	20	30	17

## Union Elbows



CAD 2D 3D RoHS 10

## USEBL



Material PBT (Polybutylene Terephthalate)

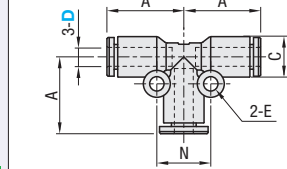
Part Number	A	C	E	Effective Sectional Area (mm <sup>2</sup> )	Mass (g)
①Type ②D					
USEBL 4	17.1	9	3.2	3.2	3.2
6	19.0	11.2	3.2	9.3	4.9
8	23.6	13.6	3.2	20.3	9.4
10	25	16.3	4.2	27.0	11.8
12	32.2	19.7	4.2	40.6	22.5
16	34	25.6	4.2	78.7	36.5

## Union Tees



CAD 2D 3D RoHS 10

## USTEL



Material PBT (Polybutylene Terephthalate)

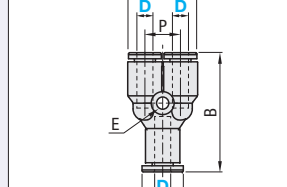
Part Number	A	C	E	N	Effective Sectional Area (mm <sup>2</sup> )	Mass (g)
①Type ②D						
USTEL 4	17.1	9		12	3.2	5
6	19	11.2	3.2	13	10.9	7.3
8	23.6	13.6		18	24.8	14.1
10	25	16.3		24	39.5	17.7
12	32.2	19.7	4.2	28	44.2	33.5
16	34	25.6		30	83.5	53.8

## Y Type



CAD 2D 3D RoHS 10

## USYL



Material PBT (Polybutylene Terephthalate)

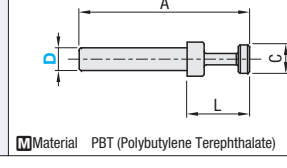
Part Number	A	B	C	E	P	Effective Sectional Area (mm <sup>2</sup> )	Mass (g)
①Type ②D							
USYL 4	18.3	31.2	9	2.2	9.3	2.5	4.9
6	22.6	34.7	11.2		11.4	9.9	7.3
8	27.8	44.2	13.6	3.2	14.2	22.8	13.9
10	33.3	46	16.3		17	36.6	17.7
12	39.7	56.8	19.7	4.2	20	43.2	32.5

## Blind Plugs



CAD 2D 3D RoHS 10

## BSLG



Material PBT (Polybutylene Terephthalate)

Part Number	A	L	C	Mass (g)
①Type ②D				
BSLG 4	30	11	6	0.5
6	34	14	8	1
8	38	16	10	2
10	41	16	12	3
12	43	16	14	4

### Specifications

Applicable Fluid	Air
Operating Temperature Range*	0 ~ 60°C
Max. Operating Pressure	0.9MPa
Operating Vacuum Level	-100kPa

\* No Freezing

# MiSUMI C-VALUE One-Touch Couplings

Similar Products Comparison Points | Economical type suitable when exact flow rate calculation is not required under normal conditions. Not RoHS compliant.

When ordering, select Part Number and Values from Selection Steps ①~③.

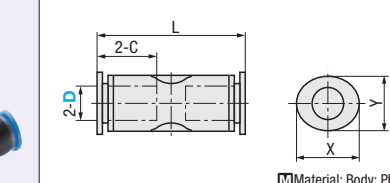
Ordering Example: Part Number (①Type · ②D/D1) - ③D2  
 PACK-EPFHU8 - 8  
 PACK-EPFHU10

## Union Straight



CAD 2D 3D

## PACK-EPFHU



Material: Body: PBT

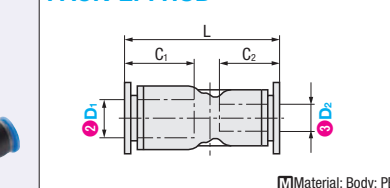
Part Number	L	C	X	Y	Qty. per Pkg.
①Type ②Applicable Tube O.D. D					
PACK-EPFHU 4	33	15	12	10	10
6	35	16	14	13	
8	39	18	16	14	5
10	47	21	20	17	
12	49	23	23	21	

## Stepped Diameter Union Straight



CAD 2D 3D

## PACK-EPFHU D



Material: Body: PBT

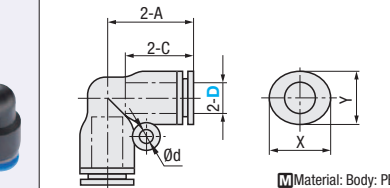
Part Number	C1	C2	L	Qty. per Pkg.
①Type ②Applicable Tube O.D. D1 ③Applicable Tube O.D. D2				
PACK-EPFHU D 6	4	16	14	31
8	6	18	16	35
10	8	21	18	39
12	10	23	21	44

## Unions



CAD 2D 3D

## PACK-EPFLU



Material: Body: PBT

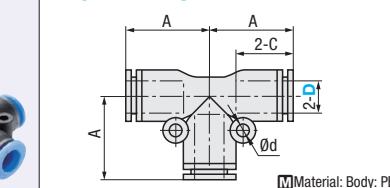
Part Number	A	C	X	Y	d	Qty. per Pkg.
①Type ②Applicable Tube O.D. D						
PACK-EPFLU 4	18	15	12	11	-	10
6	19	16	14	13	3.3	
8	23	18	16	14	3.3	5
10	27	21	20	17	4.3	
12	29	23	23	21	4.3	

## T Union Tees



CAD 2D 3D

## PACK-EPFTU



Material: Body: PBT

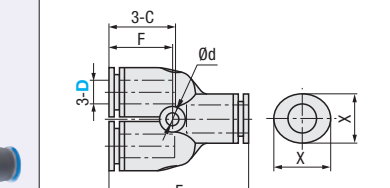
Part Number	A	C	X	Y	d	Qty. per Pkg.
①Type ②Applicable Tube O.D. D						
PACK-EPFTU 4	19	15	12	11		10
6	19	15	14	13	3.3	
8	23	18	16	14	3.3	5
10	28	21	20	17	4.3	
12	29	23	23	21	4.3	4

## Union Y



CAD 2D 3D

## PACK-EPFYL



Material: Body: PBT

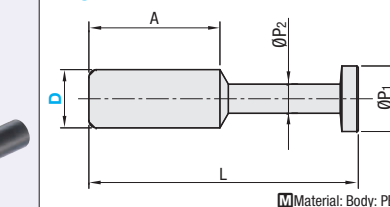
Part Number	B	F	C	d	X	Y	Qty. per Pkg.
①Type ②Applicable Tube O.D. D							
PACK-EPFYL 4	36	14	15		12	11	10
6	37	15	16	3.3	14	13	
8	40	18	17	3.3	16	14	5
10	49	21	20	4.3	20	17	
12	53	21	23	4.3	23	21	

## Blind Plugs



CAD 2D 3D

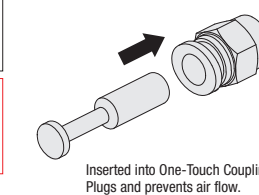
## PACK-EPFP



Material: Body: PBT

Part Number	A	L	P1	P2	Qty. per Pkg.
①Type ②Applicable Tube O.D. D					
PACK-EPFP 4	15	28	5	3	
6	17	33	7	3	
8	18	37	9	4	10
10	21	42	11	5	
12	23	44	13	6	

[Cautions]  
 Products on this page are sold by the package.  
 Refer to Qty. per Pkg. in the specification table.  
 (Ex.) PACK-EPFLU-10  
 Order Quantity 1 → 5 pcs./pkg.



Inserted into One-Touch Coupling.  
 Plugs and prevents air flow.

### Specifications

Applicable Fluid	Air
Operating Pressure Range	0~1.0MPa
Pressure Resistance	1.5MPa
Operating Vacuum Level	-100kPa
Operating Temperature Range*	-20~80°C

\* No Freezing