

# MISUMI C-VALUE Casters

- Heavy Load - Wheel Material: Rubber

Comparing points of Similar Products | RoHS: Non-compliant. Running Test Criteria: Company internal standards based on GB (Run distance 1.5km). (Refer to P.2029 for details)

When ordering, select Part Number and Values from Selection Steps 1-3.

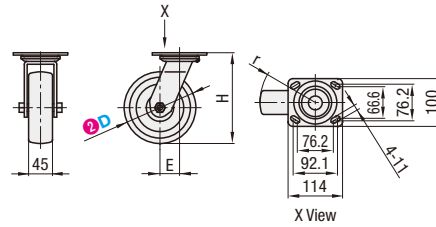
Ordering Example: Part Number (1) Type · (2) D - (3) Wheel Material  
**C-CTGJ100 - R**

## Swivel Type



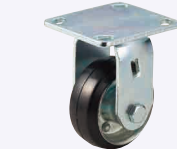
CAD 2D 3D

Type	Main Body		Wheel	Bearing	
	M Material	S Surface Treatment	M Material (Color)	Swiveling Part	Wheel
C-CTGJ	SPCC	Zinc Plating	Rubber (Black)	Incorporated	Incorporated



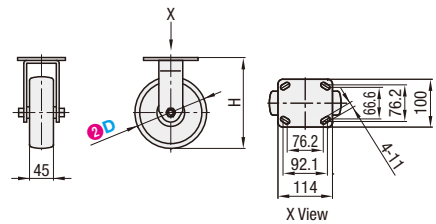
Part Number		(3) Wheel Material	H	E	r	Allowable Load (N)	Mass (g)
(1) Type	(2) D						
C-CTGJ	100	R (Rubber)	142	32	82	2000	1886
	125		165	36	98.5	2500	2400
	150		190	41	116	3000	3200

## Fixed Type



CAD 2D 3D

Type	Main Body		Wheel	Bearing	
	M Material	S Surface Treatment	M Material (Color)	Swiveling Part	Wheel
C-CTGK	SPCC	Zinc Plating	Rubber (Black)	None	Incorporated



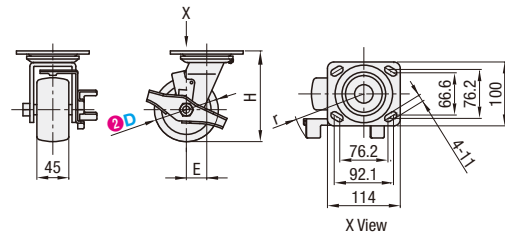
Part Number		(3) Wheel Material	H	Allowable Load (N)	Mass (g)
(1) Type	(2) D				
C-CTGK	100	R (Rubber)	142	2000	1474
	125		165	2500	2100
	150		190	3000	2800

## Swivel Type + Stopper



CAD 2D 3D

Type	Main Body		Wheel	Bearing	
	M Material	S Surface Treatment	M Material (Color)	Swiveling Part	Wheel
C-CTGS	SPCC	Zinc Plating	Rubber (Black)	Incorporated	Incorporated



Part Number		(3) Wheel Material	H	E	r	Allowable Load (N)	Mass (g)
(1) Type	(2) D						
C-CTGS	100	R (Rubber)	142	32	97	2000	2077
	125		165	36	100.5	2500	2700
	150		190	41	116	3000	3400

# MISUMI C-VALUE Casters

- Heavy Load - Wheel Material: Urethane

Comparing points of Similar Products | RoHS: Non-compliant. Running Test Criteria: Company internal standards based on GB (Run distance 1.5km). (Refer to P.2029 for details)

When ordering, select Part Number and Values from Selection Steps 1-3.

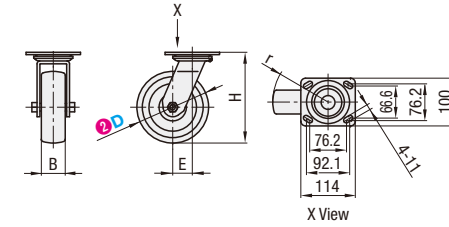
Ordering Example: Part Number (1) Type · (2) D - (3) Wheel Material  
**C-CTHJ100 - U**

## Swivel Type



CAD 2D 3D

Type	Main Body		Wheel	Bearing	
	M Material	S Surface Treatment	M Material (Color)	Swiveling Part	Wheel
C-CTHJ	SPCC	Zinc Plating	Urethane (Orange)	Incorporated	Incorporated



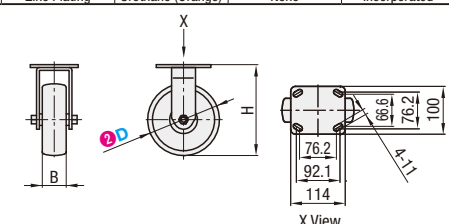
Part Number		(3) Wheel Material	H	B	E	r	Allowable Load (N)	Mass (g)
(1) Type	(2) D							
C-CTHJ	100	U (Urethane)	142	45	32	82	2800	1800
	125		165		36	98.5	3300	2300

## Fixed Type



CAD 2D 3D

Type	Main Body		Wheel	Bearing	
	M Material	S Surface Treatment	M Material (Color)	Swiveling Part	Wheel
C-CTHK	SPCC	Zinc Plating	Urethane (Orange)	None	Incorporated



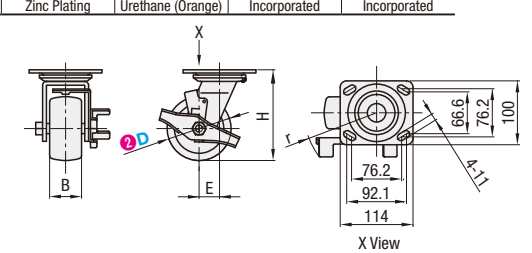
Part Number		(3) Wheel Material	H	B	Allowable Load (N)	Mass (g)
(1) Type	(2) D					
C-CTHK	100	U (Urethane)	142	45	2800	1400
	125		165		3300	2000

## Swivel Type + Stopper



CAD 2D 3D

Type	Main Body		Wheel	Bearing	
	M Material	S Surface Treatment	M Material (Color)	Swiveling Part	Wheel
C-CTHS	SPCC	Zinc Plating	Urethane (Orange)	Incorporated	Incorporated



Part Number		(3) Wheel Material	H	B	E	r	Allowable Load (N)	Mass (g)
(1) Type	(2) D							
C-CTHS	100	U (Urethane)	142	45	32	97	2800	2600
	125		165		36	100.5	3300	3300