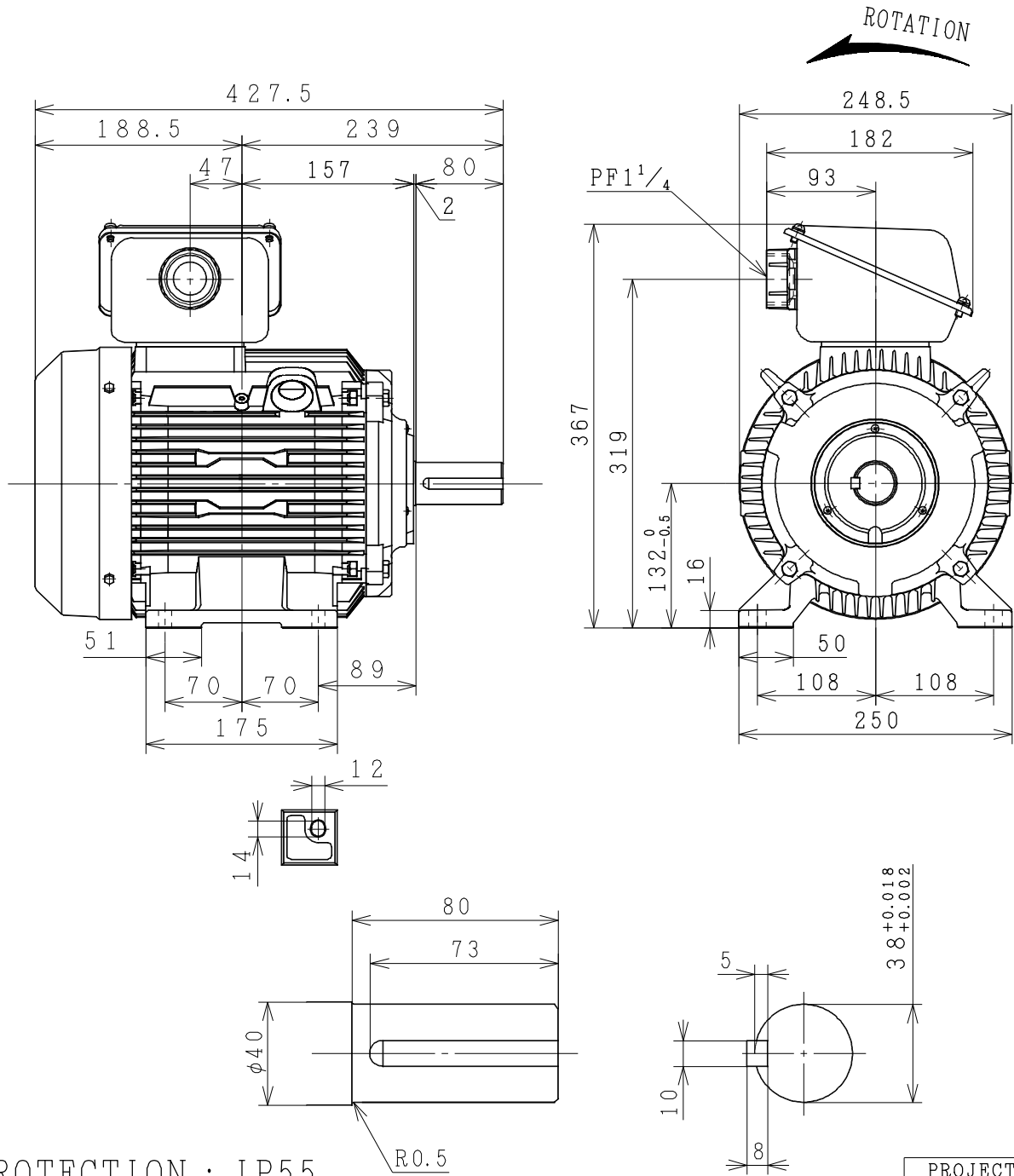
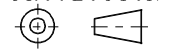


THREE-PHASE INDUCTION MOTOR

OUTPUT	TYPE	FORM	RATING	VOLTAGE (V)	FREQ. (Hz)	SYNC. SPEED (min ⁻¹)	POLES	TH. CLASS	MASS (kg)
7.5HP	TF0	KK	S1	380/415	50	3000	2	B	39
10HP	TF0	KK	S1	380/415	50	3000	2	B	44
7.5HP	TF0	KK	S1	380/415	50	1500	4	B	40
5HP	TF0	KK	S1	380/415	50	1000	6	B	41



PROJECTION

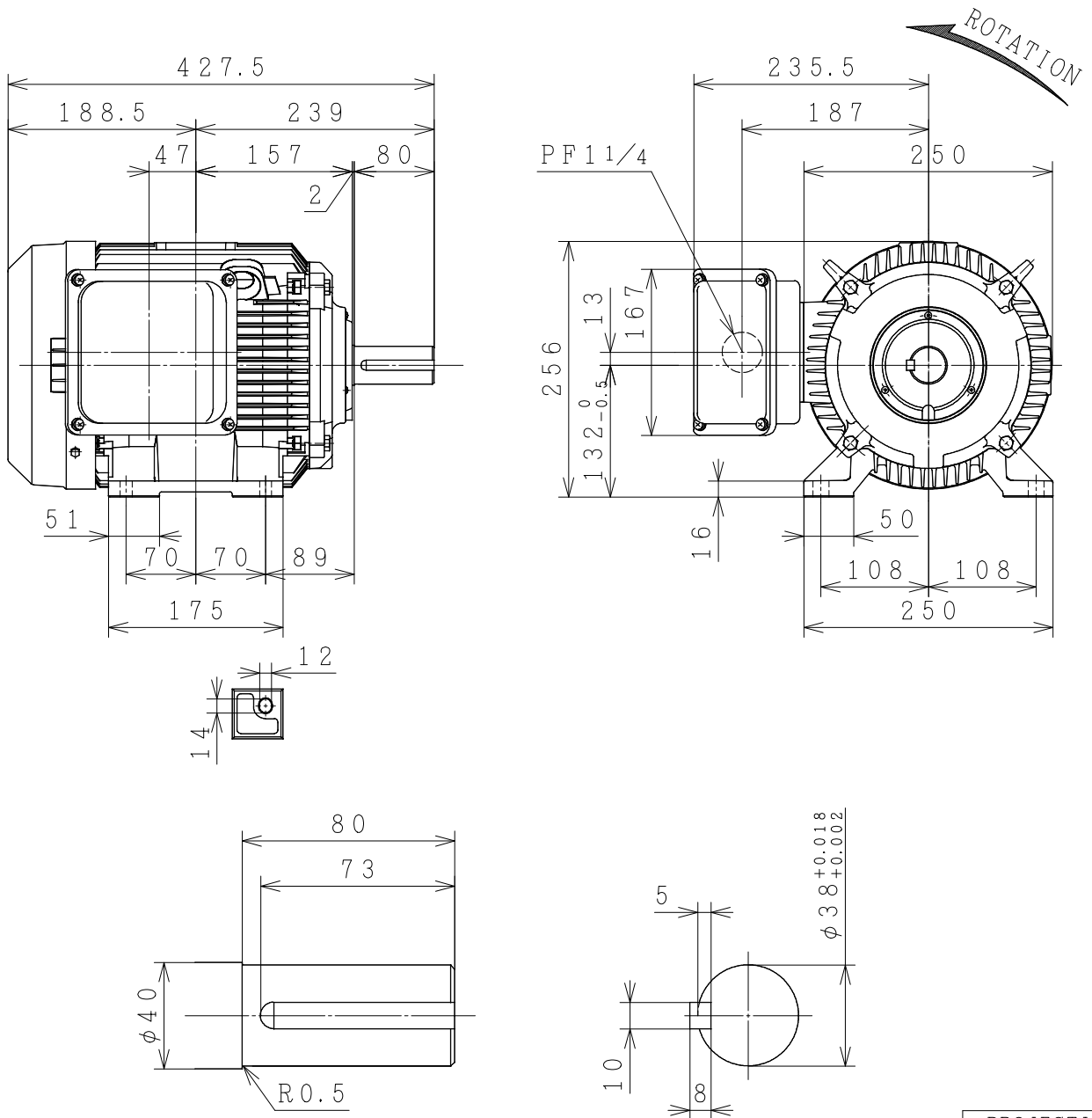


CUSTOMER	QTY.	ORDER No.	WORK No.	REV.
DIMENSIONS	HITACHI Hitachi Industrial Technology (Thailand), Ltd.		HITT WORKS DWG. No.	SH.
			4HTD03366	

FRAME SIZE TF0D-132S (TMHD)

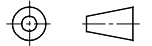
THREE-PHASE INDUCTION MOTOR

OUTPUT	TYPE	FORM	RATING	VOLTAGE (V)	FREQ. (Hz)	SYNC. SPEED (min ⁻¹)	POLES	INS. CLASS	MASS (kg)
7.5 HP	TFO	KK	S 1	380/415	50	3000	2	F	39
10 HP	TFO	KK	S 1	380/415	50	3000	2	F	44
7.5 HP	TFO	KK	S 1	380/415	50	1500	4	F	40
5 HP	TFO	KK	S 1	220/380	50	1000	6	F	41



PROTECTION: IP55

PROJECTION



CUSTOMER			QTY.	ORDER No.	WORK No.	REV.
DWN.	N. WICHARN	02-07-12	<div style="display: flex; justify-content: space-around; align-items: center;"> <div style="font-size: 2em; font-weight: bold;">DIMENSIONS</div> <div style="text-align: center;"> <small>Hitachi Industrial Technology (Thailand), Ltd.</small> </div> </div>			SH.
CHKD.	W. Thawat	}				HITT WORKS DWG. No.
APPD.	T. Shimozono					4HTD02231
FRAME SIZE			TFOF (D) -132S (TMLR)			

HITACHI

MANUFACTURER'S TEST REPORT OF INDUCTION MOTOR

MESSRS		ORDER No	
--------	--	----------	--

SPECIFICATION FOR MOTOR

OUT PUT(HP)	5	POLES	6	TYPE-FORM	TFO-K
FREQUENCY(HZ)	50/50	VOLTAGE(V)	380/415	CURRENT(A)	8.4/8.2
PHASES	3	RATING	S1	INSULATION	F
STANDARD	JEC-2137-2000	SECONDARY VOLTAGE(V)	—	SECONDARY CURRENT(A)	—
COOLING	IC411	PROTECTION	IP55	SPEED(min ⁻¹)	930/940

MFG No	FREQUENCY (HZ)	(1)NO-LOAD TEST			(2)LOCKED ROTOR TEST		
		VOLTAGE(V)	CURRENT(A)	INPUT(W)	VOLTAGE(V)	CURRENT(A)	INPUT(W)
	50	380	3.80	190.0	81.8	7.0	482.0
	50	415	4.66	246.0	81.8	7.0	482.0

(3)WINDINGS RESISTANCE (BETWEEN LINES) STATOR 115°C 3.74406(Ω)

(4)LOAD CHARACTERISTICS

LOAD(%)	CURRENT(A)	EFFICIENCY(%)	POWER FACTOR(%)	SLIP(%)
25	4.15/4.90	79.7/75.9	42.4/34.6	1.7/1.4
50	5.10/5.60	84.7/83.1	65.0/55.3	3.5/3.0
75	6.52/6.69	84.2/84.0	76.8/68.8	5.6/4.7
100	8.35/8.12	81.6/82.7	82.5/76.7	8.0/6.6
125	10.71/9.91	77.4/80.1	84.8/81.1	11.3/8.9

(5)MAXIMUM OUT PUT(%) STARTING CURRENT(A) STARTING TORQUE(%)

159/186 46.0/51.5 210/264

(6)TEMPERATURE RISE TEST (R)-RESISTANCE METHOD

STATOR WINDINGS(K)	FRAME(K)	ROTOR WINDINGS(K)
77.5/74.0 (R)	40.5/38.5	—

(7)INSULATION RESISTANCE BY 500V MEGGER

100MΩ

(8)WITHSTAND STATOR WINDINGS TO CORE 1900V 1MIN WITHSTOOD
VOLTAGE TEST ROTOR WINDINGS TO CORE — V 1MIN WITHSTOOD

(9)CONSTRUCTION, DIMENSION, PAINTING, OTHER PARTS SATISFACTORY

HITACHI INDUSTRIAL TECHNOLOGY (THAILAND) LTD.	CHECKED BY	T.SHIMOZONO
	DATE	10-JUNE-2015

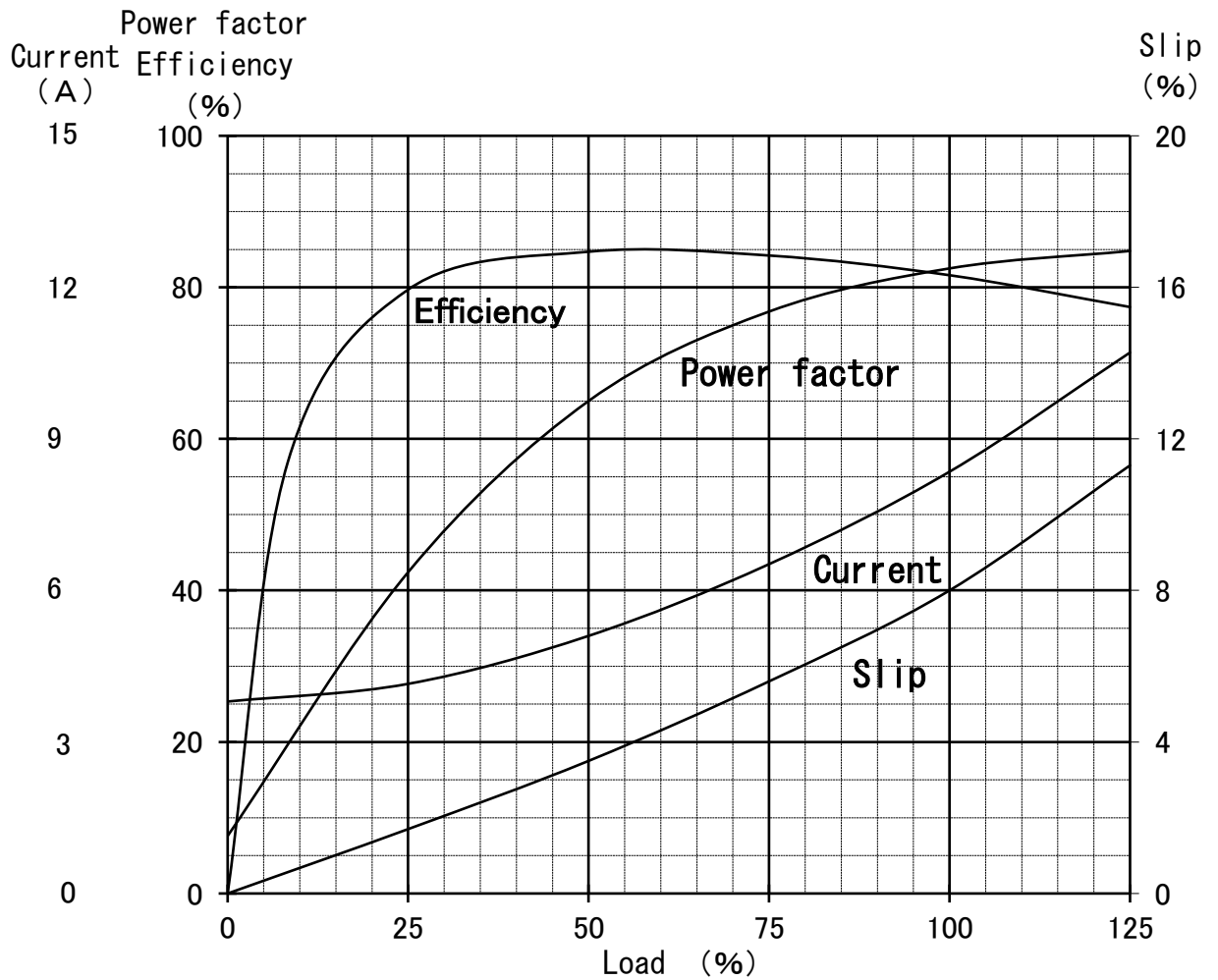
REP.No.RP30039

Three Phase Induction Motor Characteristic Curve

Hitachi Industrial Technology(Thailand),Ltd

Power (HP)	5
Pole	6
Type-Form	TFO-K, VTFO-K
Voltage (V)	380
Frequency (Hz)	50
Protection	IP44, IP55

Load (%)	0	25	50	75	100	125
Current (A)	3.80	4.15	5.10	6.52	8.35	10.71
Efficiency (%)	0	79.7	84.7	84.2	81.6	77.4
Power factor (%)	7.6	42.4	65.0	76.8	82.5	84.8
Slip (%)	0	1.7	3.5	5.6	8.0	11.3



Speed-Torque, Current Curve

5HP (V) TF0-KK 6P
380/415V 50Hz
IP44/IP55

