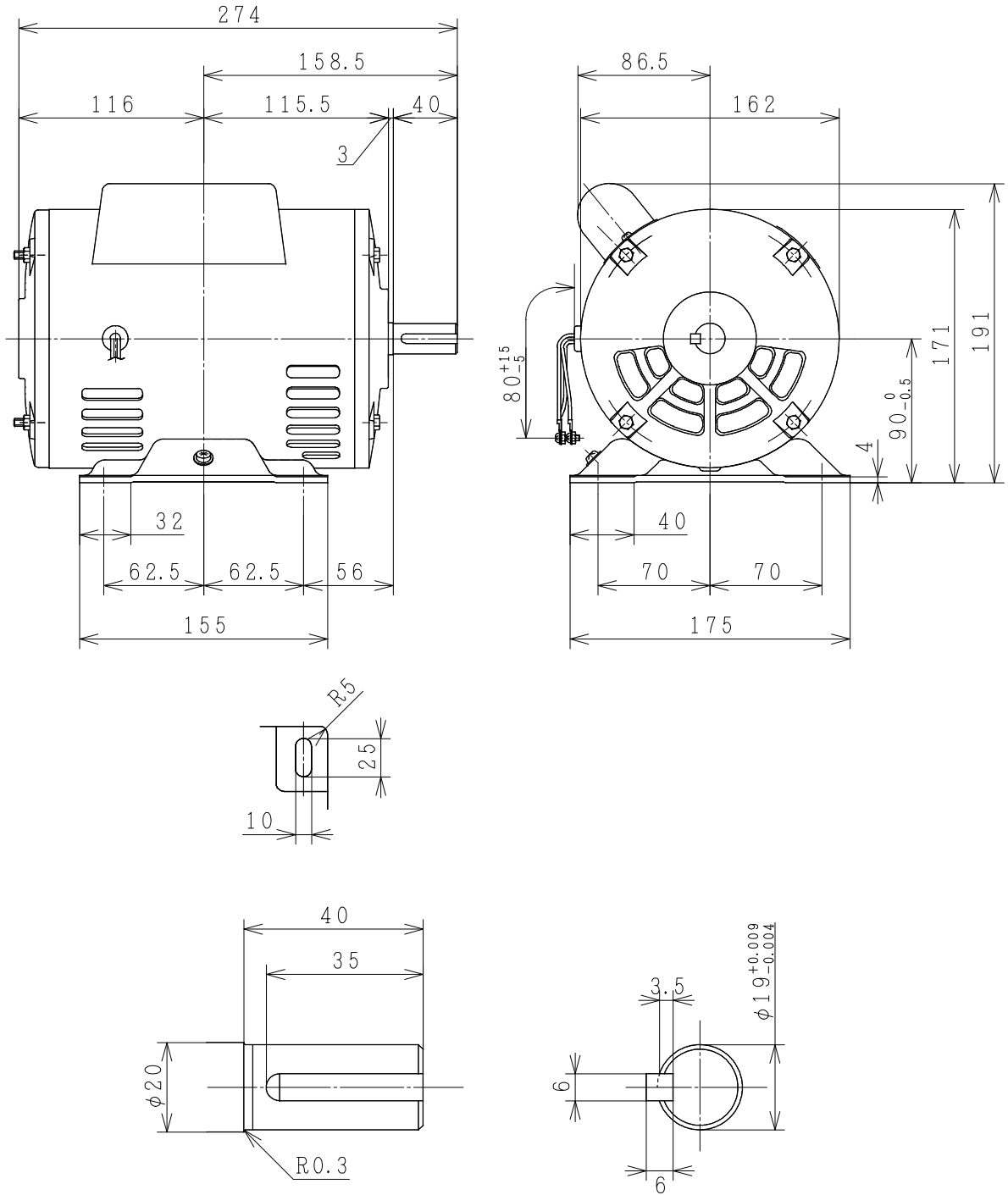


CAPACITOR START SINGLE PHASE INDUCTION MOTOR

OUTPUT	TYPE	FORM	RATING	VOLTAGE (V)	FREQ. (Hz)	SYNC. SPEED (min ⁻¹)	POLES	INS. CLASS	MASS (kg)
1HP	EFOUP	KR	S1	220V	50	1500	4	B	



PROJECTION

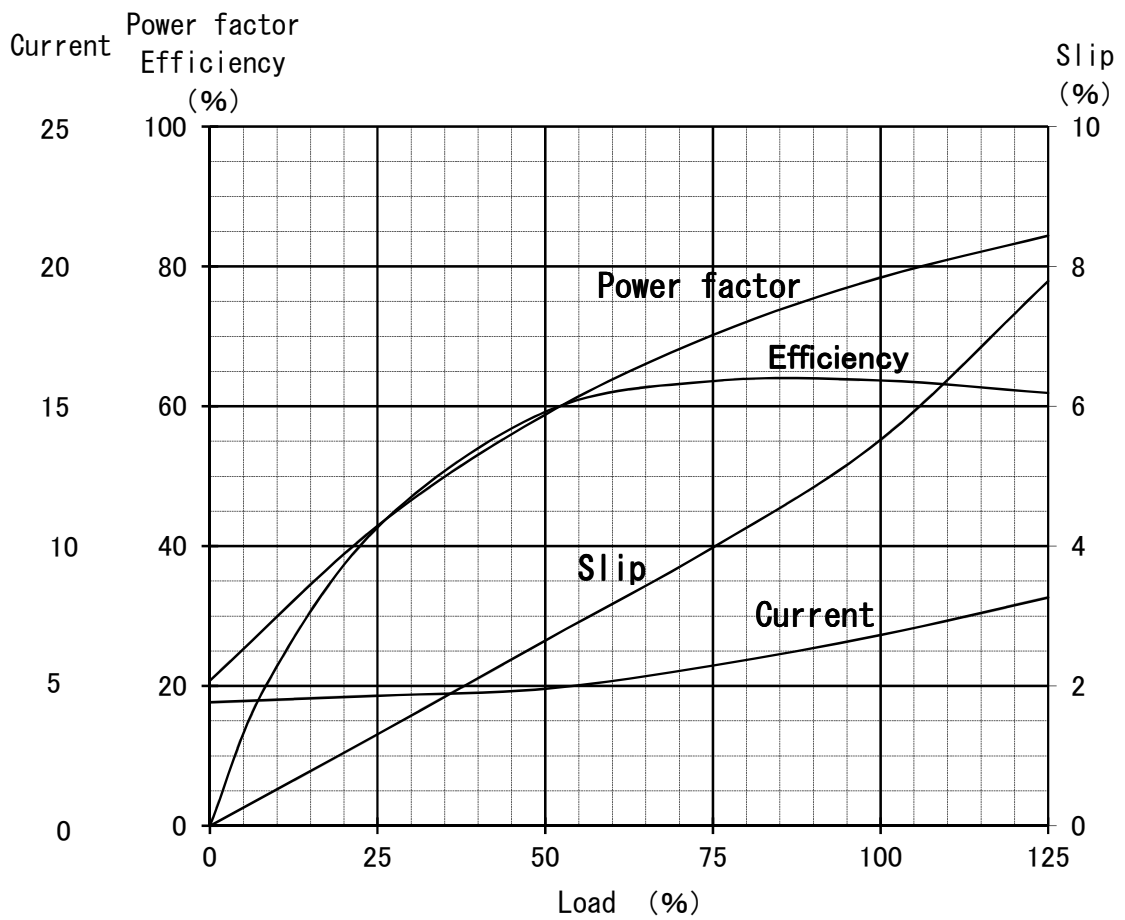
CUSTOMER			QTY.	ORDER No.	WORK No.	REV.	
DWN.	P. Tianchai	10-JUNE-2015	<div style="display: flex; justify-content: space-around; align-items: center;"> <div style="font-size: 2em; font-weight: bold;">DIMENSIONS</div> <div style="text-align: center;"> HITACHI <small>Hitachi Industrial Technology (Thailand), Ltd.</small> </div> <div style="font-size: 1.5em; font-weight: bold;">4HTD03099</div> </div>			HITT WORKS DWG. No.	SH.
CHKD.	W. Thawat						
APPD.	T. Shimozone						
FRAME SIZE			EFOUP-KR (90)				

Single Phase Induction Motor Characteristic Curve

Hitachi Industrial Technology(Thailand),Ltd

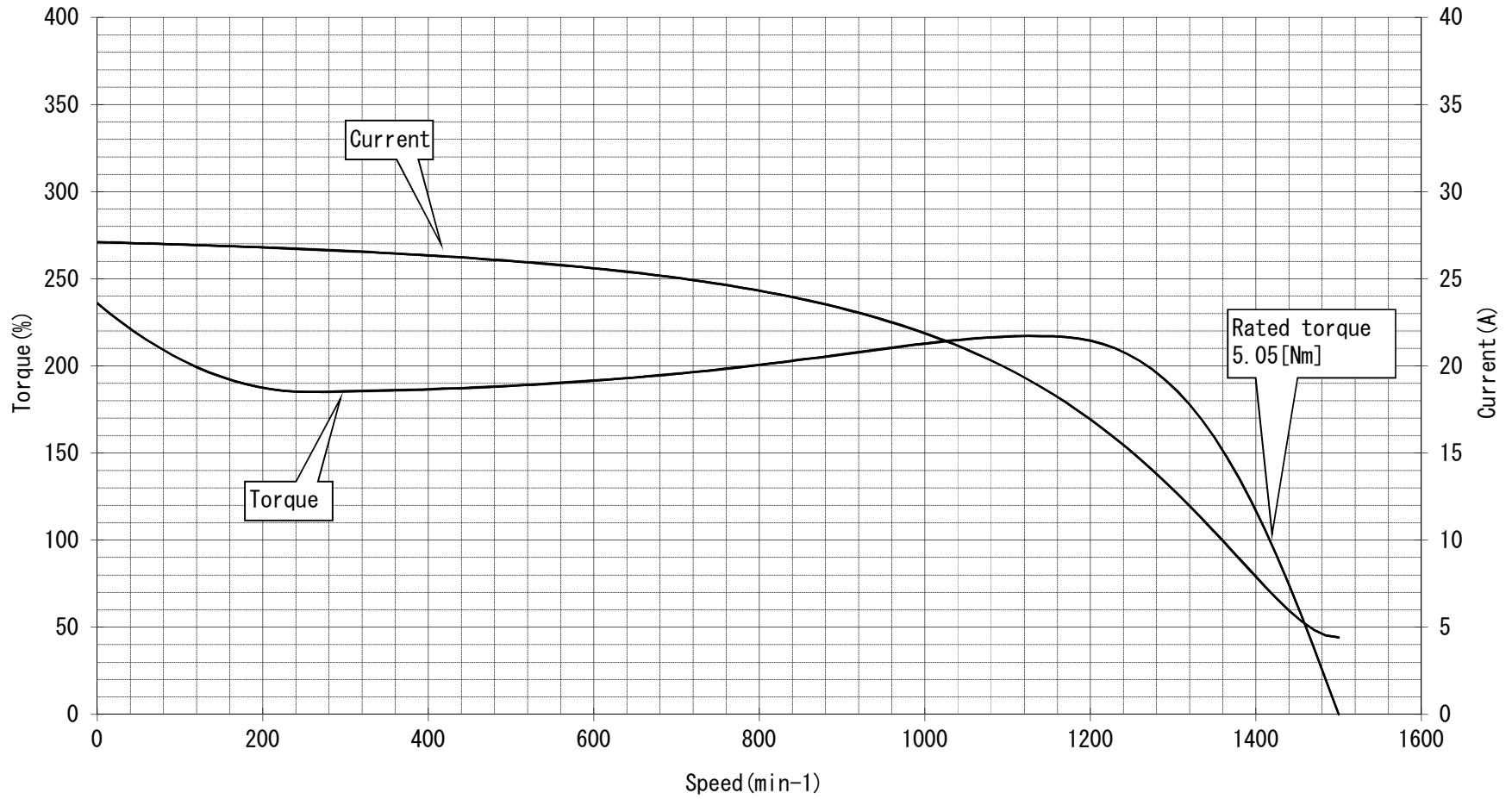
Power (HP)	1
Pole	4
Type-Form	EFOUP-KR
Voltage (V)	220
Frequency (Hz)	50

Load (%)	0	25	50	75	100	125
Current (A)	4.42	4.65	4.90	5.73	6.82	8.16
Efficiency (%)	0	42.7	59.2	63.6	63.7	61.9
Power factor (%)	20.8	42.9	58.8	70.2	78.4	84.4
Slip (%)	0	1.3	2.7	4.0	5.5	7.8



Speed-Torque, Current Curve

1HP EFOUP-KR 4P
220V 50Hz



RP50015