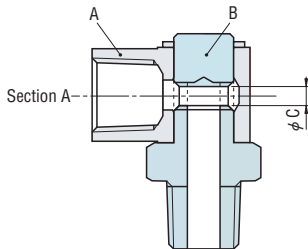


● Component drawing for L-shaped swivel joint

Conventional L-shaped swivel joint



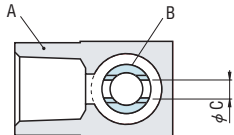
Vertical section view A



Model

LSP
JPHL
JPLJ
LSN
LSNF
SVS-LSNF

Cross section view A

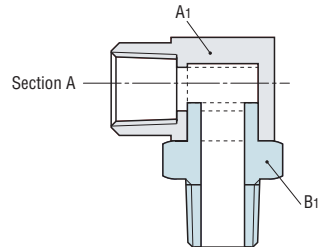


Conventional L-shaped swivel joint is composed of part A and B.
Part B has a side hole ϕC to form flow channel.
Press the incoming fluid at this joint. Flow volume at the inlet and outlet varies.
By rotating Part A to misalign side hole ϕC position, the fluid flow becomes more fluent.

New L-shaped swivel joint Constant flow type



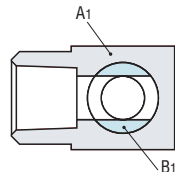
Vertical section view



Model

LSPM
JPHLM
JPLJM
JSNM
LSNFM

Cross section view A



New L-shaped swivel joint is composed of part A1 and B1.
Fluid flow variation at the inlet and outlet becomes relatively narrower due to different structure from conventional type.
Available to secure constant flow rate at any position by rotating Part A1.

* Patent pending