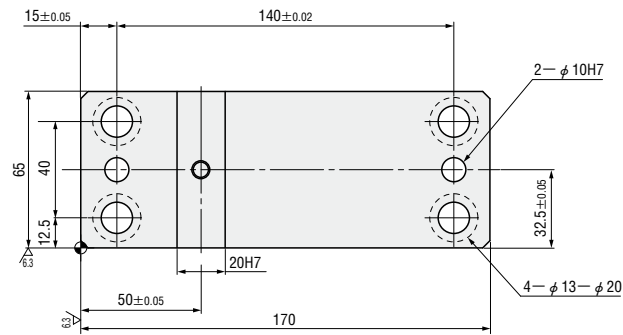


STANDARD FLYING CAM UNITS FOR PIERCE

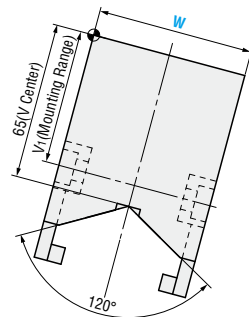
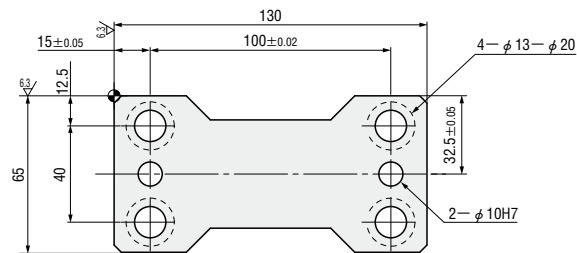
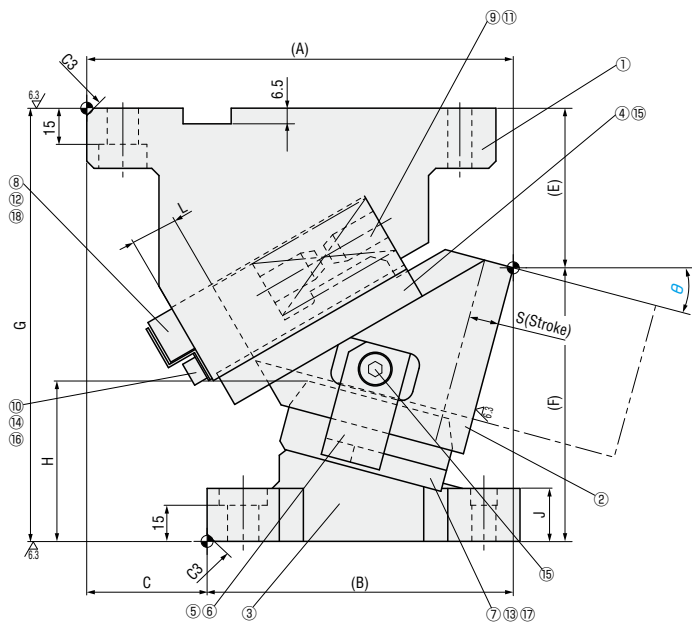
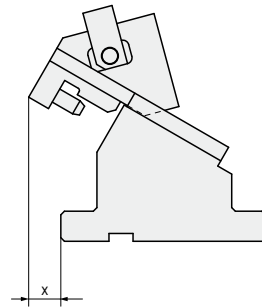
—MGFV · MEVN—



— With automatic alignment —
MGFV65 ($\theta=00-45$)
 — Without automatic alignment —
MEVN65 ($\theta=00-45$)
 (Economy type)



■ Rear removal space



■ Components table P.1179

W	θ	A	B	C	E	F	G	H	J	L	V ₁	x
65	00	170	110	60	53	127	180	59.5	33	21.2	65	7
	05	171.41	116.41	55	60.27	119.73		59.0	25	19.6		13
	10	177.16	122.16		63.06	116.94		63.5		18.3		20
	15	177.2	127.2	50	66.33	113.67		67.9	22	17.3		25
	20	176.51	136.51	40	70.01	109.99		72.2		17.1		30
	25	172.94	137.94	35	75.64	104.36		74.9		16.6		31
	30	177.78	147.78	30	78.32	101.68		80.7				
	35	173.29	153.29	20	83.25	96.75		84.5				
	40	170.78	160.78	10	82.44	97.56		96.0	16.5	35		
	45	165.5	163	2.5	86.51	93.49		100.9				

Slide Stroke S	Working force KN (tonf)		Spring load N (kgf)			Total weight kg	Catalog No.	W	θ
	Standard working force	Max. working force	Preload	5mm before bottom dead center	Max. load				
15.0	19.6 (2.0)	39.2 (4.0)	289 (29.5)	888(90.6)	1190 (121.3)	9.5	— With automatic alignment — MGFV — Without automatic alignment — MEVN (Economy type)	65	00
15.1			357 (36.4)	914(93.2)		9.3			05
15.2			350 (35.7)	939(95.7)	1226 (125.0)	9.0			10
15.5			398 (40.5)	958(97.7)		8.8			15
16.5			407	977(99.6)		8.6			20
17.1			431 (44.0)	987(100.6)		8.5			25
18.5			436 (44.4)	1011(103.1)		8.3			30
19.6				1025(104.5)	8.3	35			
21.5				1044(106.5)	8.1	40			
23.3				1059(107.9)	8.1	45			

Order **Catalog No.** **MGFV** **W** **65** — **θ** **35**

Alterations **Catalog No.** **MGFV** **W** **65** — **θ** **20** — **(K · SC)** **SC30**

Days to Ship **Quotation**

Price **Quotation**

Alterations	Code	Spec.
	K	Add locating key (With 1 hexagon socket head cap screws M8×15)
	SC	Move forward mounting surface $1 \leq SC \leq 60$ 1mm increment