

吊りフック
HOOKS

リフティングバー
LIFTING BARS

Hook

YFDESQ

Max. allowable load: 785kgf

Material 40Cr

Order -

Delivery **Quotation**

Hook

CFQZB

Material S45C

Max. allowable load kgf	Catalog No.		L	B	L1	L2	L3	H	E
	Type	D							
80	CFQZB	16	65	30	20	31	18	20	10
125		20	90	40	25	36	30	30	12
196		25	102	48	32	46	30	35	14
321		32	128	55	40	63	30	40	18
507		40	140	70	44	67	35	50	22

Order -

Delivery **Quotation**

RoHS **HLFB**

Material S45C With stopper

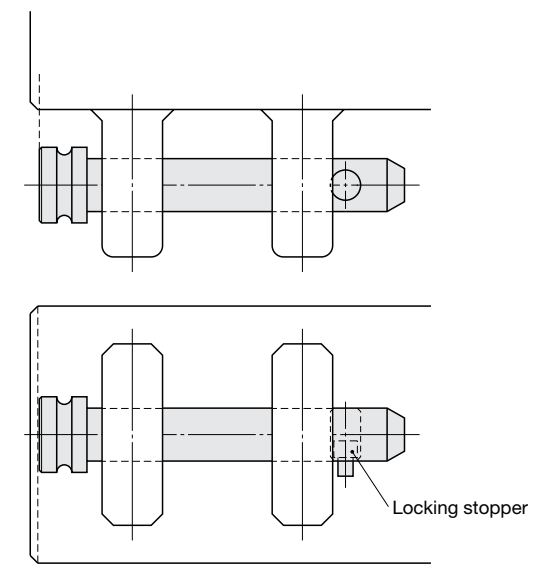
D1	L	ℓ	Max. allowable load when 4 bars are used N (kgf)	Catalog No.	
				Type	D
34	185	135	29420 { 3000}	HLFB	25
44	240	190	49033 { 5000}		35
50	260	210	88260 { 9000}		40
60	290	240	137293 { 14000}		50
75	330	280	166712 { 17000}		65

*Load {kgf} = Load {N} × 0.101972

Order

Delivery **Quotation**

ex Example ⚠ Be sure to install with the locking stopper facing downwards. Install so that the flange does not protrude from the die during use.



COMPONENTS FOR LIFTING AND DIE STORING

COMPONENTS FOR LIFTING AND DIE STORING