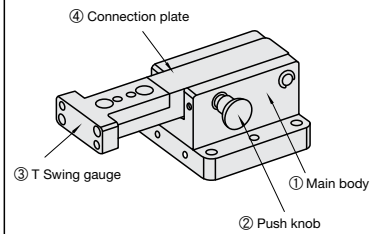
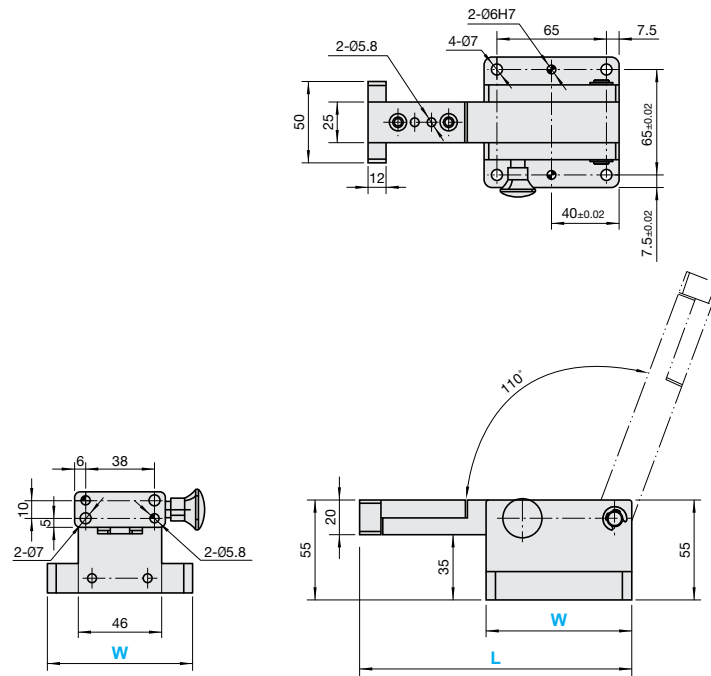


# W SHAPE STEEL / ALUMINUM HORIZONTAL FLIP COMPONENTS -LARGE TYPE-

W Shape Steel / Aluminum Horizontal Flip Components Push knob type

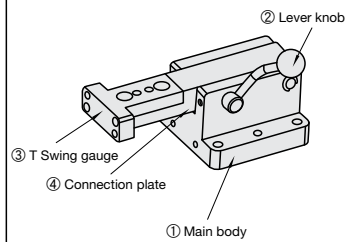


| Code   | Material | Left / Right | Surface Treatment |
|--------|----------|--------------|-------------------|
| WSCWLC | S45C     | L            | Nickel coating    |
| WSCWRC |          | R            |                   |
| WAWLC  | 6063     | L            | Anodizing coating |
| WAWRC  |          | R            |                   |

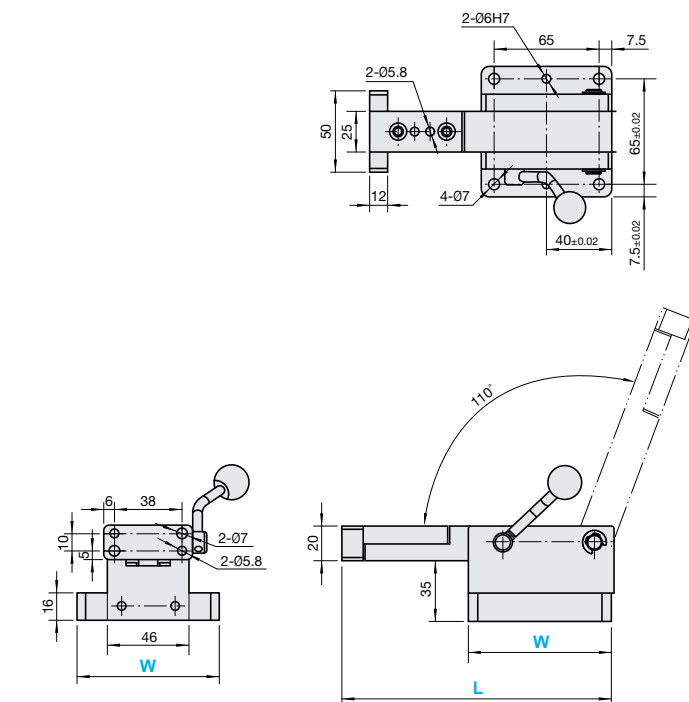


The above drawings are from Left side view and symmetric from Right side view

W Shape Steel / Aluminum Horizontal Components Lever knob type



| Code   | Material | Left / Right | Surface Treatment |
|--------|----------|--------------|-------------------|
| WSCWLY | S45C     | L            | Nickel coating    |
| WSCWRY |          | R            |                   |
| WAWLY  | 6063     | L            | Anodizing coating |
| WAWRY  |          | R            |                   |



The above drawings are from Left side view and symmetric from Right side view

| Material | Left / Right L/R | Catalog No. |              |           | Length (L) | Surface Treatment |
|----------|------------------|-------------|--------------|-----------|------------|-------------------|
|          |                  | Type        | Locking type | Width (W) |            |                   |
| Steel    | L                | WSCWL       | C            | 80        | 150        | Nickel coating    |
|          | R                | WSCWR       |              |           |            |                   |
| Aluminum | L                | WAWL        | C            | 80        | 150        | Anodizing coating |
|          | R                | WAWR        |              |           |            |                   |

Order Catalog No.  -

Delivery **Quotation**

Alterations

|                     | Alterations | Code | Spec.  |
|---------------------|-------------|------|--|
| Change length       |             | LC   | Possible alteration length 150 < L < 275 (1mm Increment) |
| Swing gauge no hole |             | NBB  | T swing gauge no hole (No heat treatment)                |

### ■ Base Support for Steel T Shape Flip Component



I Shape Support GZSC80 P.33

### ■ Base Support for Aluminum T Shape Flip Component



Base Support XCDZA80 P.36



Aluminum Frame Support XCA80 P.35