

NEW

WATER FLOW CHECKERS (SUS)

SIMPLE FLOW METER (STAINLESS STEEL)

■ Application Use for simple flow checks.



■ Features

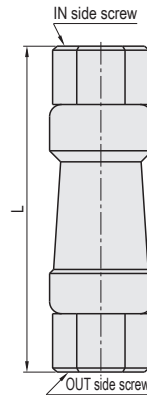
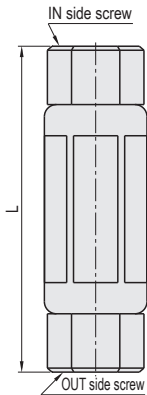
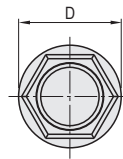
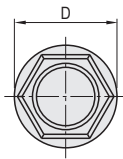
- A simple flow meter made of stainless steel.

■ Material Polyamide / stainless steel

Operating temperature (oil) (°C)	120 or less
Operating temperature (water) (°C)	80 or less
Allowable pressure (MPa)	0.98
Max. flow rate (l/min)	10

M-FLM-SUS-S-33

M-FLM-SUS-T-33



L	D	IN side screw	OUT side screw	Type	Part Number		Unit Price
					Type	No.	
81	25.3	RC(PT)3/8	RC(PT)3/8	Straight	M-FLM-SUS	S-33	1~9 pcs Quotation
				Taper		T-33	



Order

Part Number

M-FLM-SUS-S-33
M-FLM-SUS-T-33



Days to Ship

Quotation



Price

Quotation

COMPONENTS FOR MOLD COOLING AND TEMPERATURE CONTROLLING SYSTEMS