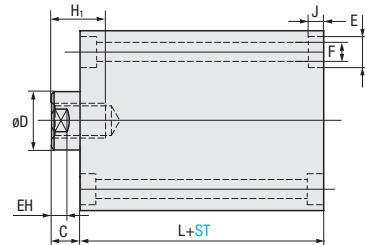
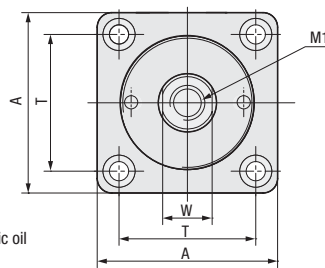
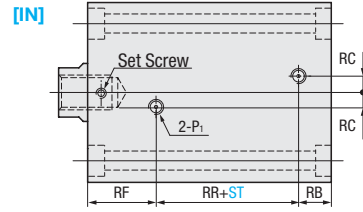
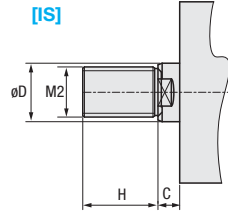


HYDRAULIC CYLINDER - COMPACT

— Compact High Pressure (Single Rod Type) SD 210kgf/cm² Basic Type—



K-HC-SD210



Body (tube) : S45C
 Rod : S45C+Cr plating
 Piston : AL7075
 Rod End Cap : AL7075
 Applicable operating fluid : General mineral hydraulic oil
 Operating pressure range : 3~70(140)kgf/cm²
 Operating speed range : 8~100mm/sec
 Operating temperature range : -10~80°C

A Component : 1 lock nut (IS Type Only)

Internal Diameter	Rod B Type				A	T	W	L	H ₁	C	EH	E	F	J	RR	RF	RB	RC	P ₁
	D	H	M1	M2															
32	18	35	M12×P1.75	M16×P1.5	68	47	14	70	20	15	7	14	9	8.6	25	32	13	10	1/4
40	22	35	M16×P2	M20×P1.5	72	52	19	70	25	15	7	17.5	11	10.8	25	32	13	10	1/4
50	28	40	M20×P2.5	M24×P1.5	84	58	24	75	29	15	8	20	14	13	27	32	16	10	1/4
63	35	50	M27×P3	M30×P1.5	96	69	30	79	35	18	9	23	16	15.2	30	33	16	10	1/4
80	45	60	M30×P3.5	M39×P1.5	118	86	41	90	40	20	14	26	18	17.5	34	38	18	15	3/8
100	55	75	M39×P4	M48×P1.5	144	105	50	120	50	25	14	32	22	21.5	45	50	25	18	1/2
125	70	95	M48×P5	M64×P2	176	130	65	160	60	30	18	39	26	25.5	52	70	38	23	3/4

Part Number		Internal Diameter	1mm increments		Rod End	
TYPE	No.		ST		M	
					Female Screw	Male Screw
K-HC (Single Rod Type)	SD210	32	5 ≤ ST ≤ 80		IN	IS
		40				
		50	5 ≤ ST ≤ 100			
		63				
		80	5 ≤ ST ≤ 120			
		100				
125						



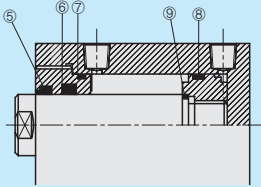
Order

Part Number — Internal Diameter — ST — M
K-HC-SD210 — **63** — **80** — **IN**



Days to Ship

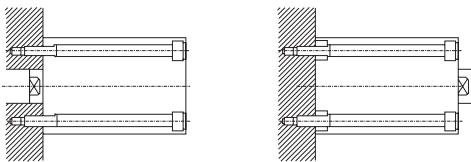
Quotation

Alterations	Code	Spec.
	VIT	VIT = Fluorine rubber seal change for high temperature ⚠ Destruction temperature is 120°C

 Alterations  **Part Number** — **Internal Diameter** — **ST** — **M** — **(VIT...etc)**
 K-HC-SD210 — 63 — 80 — IN — VIT

 Days to Ship **Quotation**

■ Mounting method



■ Terms & Conditions:

- ⚠ Warranty period: 1 year (based on the date of MISUMI shipment)
※ Check the warranty policy for details.
- ⚠ If the internal part of the cylinder is damaged due to the use of contaminated oil (mixing iron, chips, etc.), repair cost will be charged regardless of the warranty period.
- ⚠ For the buckling load, please check reference data.
- ⚠ At the time of mounting, please align the centre of the rod's axis with the direction of load's motion accurately. If the centre is shifted, it may cause malfunction, leakage, packing damage and cylinder damage.
- ⚠ When using extreme cold, extreme high temperature, extreme low pressure, and extreme high pressure, please contact us before ordering. Packing and seal changes are required depending on the environment.
- ⚠ If a problem occurs during use, send the hydraulic cylinder without disassembling it for easy identification.