

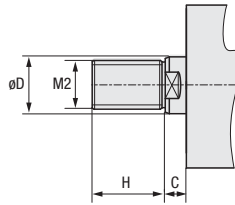
HYDRAULIC CYLINDER - COMPACT

— Compact (Single Rod Type) LA 70 • 140kgf/cm² Transaxial Foot Type —

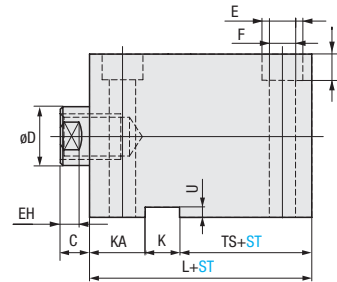
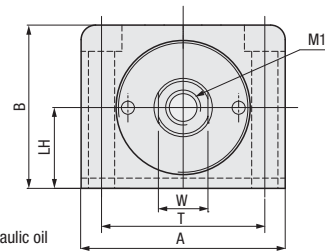
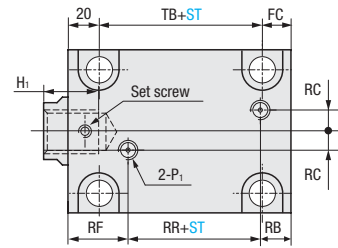


K-HC-LA70 / K-HC-LA140

[IS]



[IN]



Body (tube) : S45C
 Rod : S45C+Cr Plating
 Piston : AL7075
 Rod End Cap : AL7075
 Applicable operating fluid : General mineral hydraulic oil
 Operating pressure range : 3~70(140)kgf/cm²
 Operating speed range : 8~100mm/sec
 Operating temperature range : -10~80°C

Component : 1 lock nut (IS Type Only)
 1 Fixed Key

Internal Diameter	Rod B Type				A	T	W	B	LH	U	L	KA	K	TS	H ₁	C	EH	E	F	J	RR	RF	RB	RC	TB	FC	P ₁
	D	H	M1	M2																							
32	18	25	M12×P1.75	M16×P1.5	70	56	14	56	25	5	54	28	12	14	15	10	7	14	9	8.6	14	28	12	10	24	10	PT1/4
40	22	30	M16×P2	M20×P1.5	80	62	19	64	29	5	55	28	12	15	20	10	7	17.5	11	10.8	16	27	12	10	23	12	PT1/4
50	28	35	M20×P2.5	M24×P1.5	94	74	24	74	34	5.5	60	29	14	17	24	11	8	20	14	13	19	28	13	10	27	13	PT1/4
63	35	45	M27×P3	M30×P1.5	114	90	30	89	42	6	67	31	16	20	33	13	9	23	16	15.2	24	30	13	10	32	15	PT1/4
80	45	60	M30×P3.5	M39×P1.5	142	115	41	109	52	6	78	36	16	26	36	17	14	26	18	17.5	25	35	18	15	40	18	PT3/8

When the internal diameter is set at 32 • 40 & ST101 or more, then dimensions marked with (*) in the above table will change as shown in the table below.

Part Number		Internal Diameter	1mm increments		Rod End	
TYPE	No.		ST		M	
					Female Screw	Male Screw
K-HC (Single Rod Type)	LA70 LA140	32	5 ≤ ST ≤ 100 (*) 101 ≤ ST ≤ 200		IN	IS
		40	When the internal diameter is set at 32 • 40 & ST101 or more, then dimensions marked with (*) in the above table will change as shown in the table below.			
		50				
		63				
		80	5 ≤ ST ≤ 200			



Order

Part Number	Internal Diameter	ST	M
K-HC-LA70	40	80	IN
K-HC-LA140	50	100	IS

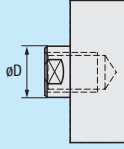
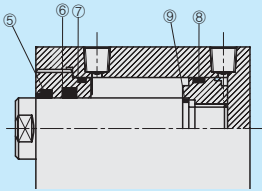
(*) Table of dimensions changed from Internal Diameter 32 • 40 & ST101 or more.





Days to Ship

Quotation

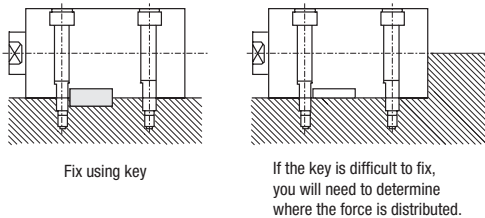
Internal Diameter	L	TS	RR	RB	TB	FC
32	72	32	16	28	32	20
40	72	32	18	27	32	20

Alterations	Code	Spec.																																		
	CRD	<p>CRD = Rod C series</p> <table border="1"> <thead> <tr> <th rowspan="2">Internal Diameter</th> <th colspan="4">Rod C Type</th> <th rowspan="2">W</th> </tr> <tr> <th>D</th> <th>H</th> <th>M1</th> <th>M2</th> </tr> </thead> <tbody> <tr> <td>40</td> <td>18</td> <td>25</td> <td>M12×P1.75</td> <td>M16×P1.5</td> <td>14</td> </tr> <tr> <td>50</td> <td>22</td> <td>30</td> <td>M16×P2</td> <td>M20×P1.5</td> <td>19</td> </tr> <tr> <td>63</td> <td>28</td> <td>35</td> <td>M20×P2.5</td> <td>M24×P1.5</td> <td>24</td> </tr> <tr> <td>80</td> <td>35</td> <td>45</td> <td>M27×P3</td> <td>M30×P1.5</td> <td>30</td> </tr> </tbody> </table> <p>⊗ Internal diameter 32 is not available</p>	Internal Diameter	Rod C Type				W	D	H	M1	M2	40	18	25	M12×P1.75	M16×P1.5	14	50	22	30	M16×P2	M20×P1.5	19	63	28	35	M20×P2.5	M24×P1.5	24	80	35	45	M27×P3	M30×P1.5	30
Internal Diameter	Rod C Type				W																															
	D	H	M1	M2																																
40	18	25	M12×P1.75	M16×P1.5	14																															
50	22	30	M16×P2	M20×P1.5	19																															
63	28	35	M20×P2.5	M24×P1.5	24																															
80	35	45	M27×P3	M30×P1.5	30																															
	VIT	<p>VIT = Fluorine rubber seal change for high temperature Ⓢ Destruction temperature is 120°C</p>																																		

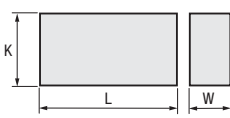
 Alterations  **Part Number** — **Internal Diameter** — **ST** — **M** — (CRD-VIT...etc)
 K-HC-LA70 — 40 — 80 — IN — CRD
 K-HC-LA140 — 50 — 100 — IS — CRD — VIT

 Days to Ship **Quotation**

■ Mounting method



■ Fix key dimension table

Drawing	Spec.			
	Internal Diameter	K	W	L
	32	12	8	63
	40	12	8	70
	50	14	9	80
	63	16	10	100
	80	16	10	100

■ Terms & Conditions:

- Ⓢ Warranty period: 1 year (based on the date of MISUMI shipment)
 ※ Check the warranty policy for details.
- Ⓢ If the internal part of the cylinder is damaged due to the use of contaminated oil (mixing iron, chips, etc.), repair cost will be charged regardless of the warranty period.
- Ⓢ For the buckling load, please check reference data.
- Ⓢ At the time of mounting, please align the centre of the rod's axis with the direction of load's motion accurately. If the centre is shifted, it may cause malfunction, leakage, packing damage and cylinder damage.
- Ⓢ When using extreme cold, extreme high temperature, extreme low pressure, and extreme high pressure, please contact us before ordering. Packing and seal changes are required depending on the environment.
- Ⓢ If a problem occurs during use, send the hydraulic cylinder without disassembling it for easy identification.