

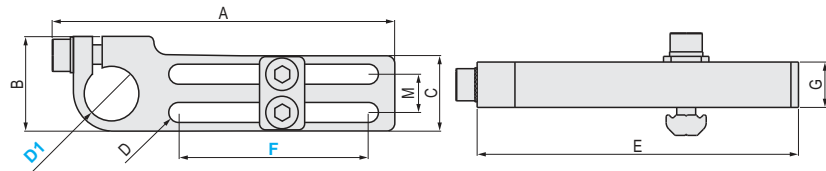
NEW

MOUNTING BRACKET

Heavy-duty Mounting Bracket (with T-Nuts)



MSMBC



M Material	S Surface treatment
Aluminum product	Anodizing

ⓘ This product is used together with the profile grip and its components. Note that It may not be compatible to assemble with other products.
 ⓘ When tightening, the gap is controlled to be less than 1mm.
 ⓘ The surface is anodized, and the color of the actual product may vary from the product picture.

Part Number	D1	F	A	B	C	D	E	G	M	Weight (g)	Type of T-Nuts
MSMBC	10	40	75	20	16	4.1	70	8.3	8	30	MPTN4—8
	12	40	75	20.5	16	4.2	70	8.3	8	40	MPTN4—8
	14	50	90.6	25	20	5.2	85	12	10	60	MPTN5—10
	20	60	110.6	30	25	5.1	105	15	15	85	MPTN5—15
	30	60	122.2	42	35	5.1	115	20	22	175	MPTN5—22



Order

Part Number — **D1** — **F**
 MSMBC — 10 — 40



Example



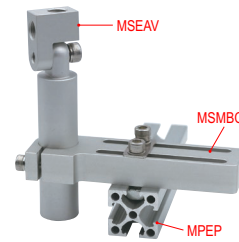
Days to Ship

Quotation



Price

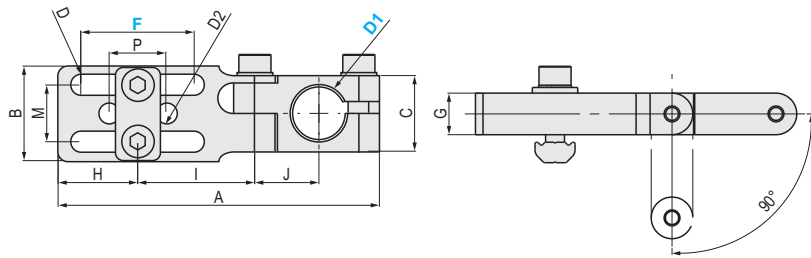
Quotation



Slotted Angle Bracket (with T-Nuts)



MSMBD



M Material	S Surface treatment
Aluminum product	Anodizing

ⓘ This product is used together with the profile grip and its components. Note that It may not be compatible to assemble with other products.
 ⓘ When tightening, the gap is controlled to be less than 1mm.
 ⓘ The surface is anodized, and the color of the actual product may vary from the product picture.

Part Number	D1	F	A	B	C	D	D2	G	H	I	J	M	P	Weight (g)	Type of T-Nuts
MSMBD	10	20	64.5	16	16	4.1	—	9	15	23	14	8	—	30	MPTN4—8
	12	20	64.5	16	16	4.2	—	9	15	23	14	8	—	35	MPTN4—8
	14	30	85	25	20	5.1	5.1	11	21	31	17	15	15	50	MPTN5—15
	20	40	107	25	25	5.1	5.1	13	26	39	22	15	15	90	MPTN5—15
	30	50	135.5	36	36	5.2	5.1	16	32	49	28	22	22	185	MPTN5—22

ⓘ MSMBD—10—20 does not have D2 and P dimensions. It also does not have two small round holes.



Order

Part Number — **D1** — **F**
 MSMBD — 10 — 20



Example



Days to Ship

Quotation



Price

Quotation

