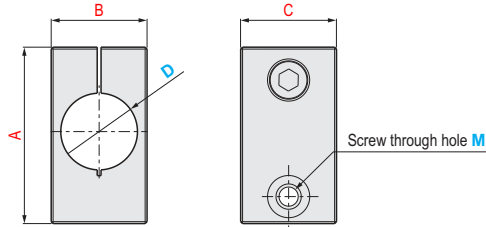


**NEW**

**BRACKET**  
**BRACKET**

■ **Accessory Bracket**

**MSMBH**



|                   |                            |
|-------------------|----------------------------|
| <b>M</b> Material | <b>S</b> Surface treatment |
| Aluminum product  | Anodizing                  |

- ⓘ This product is used for the fixing and installation with the steel tube and its components. Note that it may not be compatible to assemble with other products.
- ⓘ When tightening with steel tubes, the gap is controlled to be less than 1mm.
- ⓘ The surface is anodized, and the color of the actual product may vary from the product picture.

| Part Number  | D  | M  | A  | B  | C  | Weight (g) |
|--------------|----|----|----|----|----|------------|
| <b>MSMBH</b> | 8  | M5 | 35 | 14 | 12 | 13         |
|              | 8  | M6 | 35 | 14 | 12 | 12         |
|              | 12 | M5 | 39 | 20 | 16 | 26         |
|              | 12 | M6 | 39 | 20 | 16 | 25         |
|              | 12 | M8 | 45 | 25 | 20 | 42         |
|              | 20 | M6 | 50 | 20 | 25 | 48         |
|              | 20 | M8 | 50 | 20 | 25 | 45         |

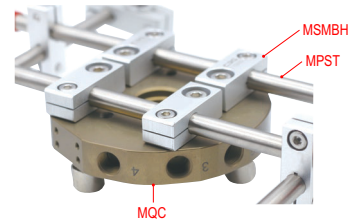


Order

Part Number — D — M  
**MSMBH** — 8 — M5



Example



Days to Ship

**Quotation**

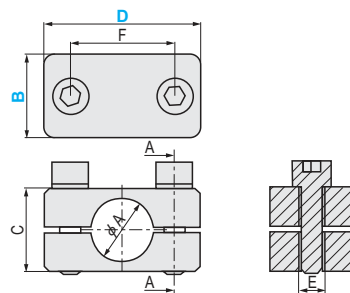
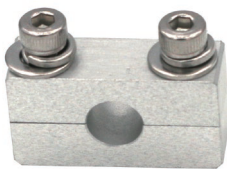


Price

**Quotation**

■ **Bracket**

**MSMBS**



|                   |                            |
|-------------------|----------------------------|
| <b>M</b> Material | <b>S</b> Surface treatment |
| Aluminum product  | Anodizing                  |

- ⓘ This product is used for the fixing and installation with the steel tube and its components. Note that it may not be compatible to assemble with other products.
- ⓘ When tightening with steel tubes, the gap is controlled to be less than 1mm.
- ⓘ The surface is anodized, and the color of the actual product may vary from the product picture.

| Part Number  | D  | B  | A  | C  | E  | M  | Weight (g) |
|--------------|----|----|----|----|----|----|------------|
| <b>MSMBS</b> | 8  | 10 | 30 | 16 | 20 | M4 | 16         |
|              | 8  | 16 | 30 | 16 | 20 | M6 | 29         |
|              | 12 | 10 | 30 | 16 | 20 | M4 | 15         |
|              | 12 | 16 | 30 | 16 | 20 | M6 | 29         |
|              | 20 | 10 | 40 | 25 | 30 | M6 | 33         |
|              | 20 | 16 | 40 | 25 | 30 | M6 | 44         |

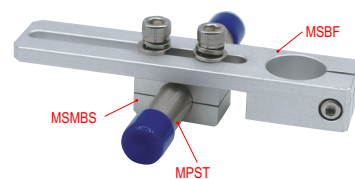


Order

Part Number — D — B  
**MSMBS** — 8 — 10



Example



Days to Ship

**Quotation**



Price

**Quotation**