

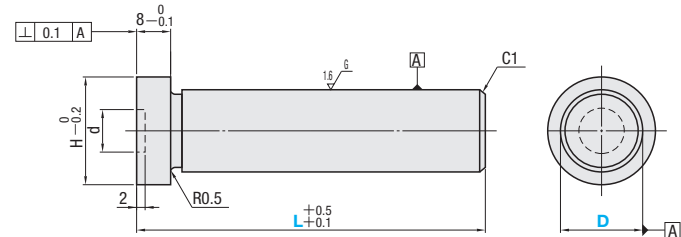
RETURN PINS FOR MIDDLE · LARGE MOLD

—COUNTERBORE TYPE—

RoHS



RP8TXE (e7)
RP8TXF (f6)



SUJ2
58HRC~
(Induction hardening)

A center hole may remain on the right hand side tip.

H	d	D	D tolerance		Part Number Type	D	L 0.1mm increments
			RP8TXE(e7)	RP8TXF(f6)			
20	10.5	15	-0.032 0.050	-0.016 0.027	RP8TXE (e7)	15	100.0 ~ 400.0
25		20	RP8TXF (f6)	20		100.0 ~ 600.0	
30	15.5	25		-0.040 -0.061	-0.020 -0.033	25	100.0 ~ 700.0
35	20.5	30	-0.050 -0.075	-0.025 -0.041	30	100.0 ~ 700.0	
40	25.5	35			35	100.0 ~ 700.0	



Order

Part Number — L
RP8TXE20 — 582.5



Days to Ship

Quotation



Price

Quotation



Alterations

Part Number — L — (NCH)
RP8TXE15 — 106.5 — NCH

Alteration	Code	Spec.	1Code
	NCH	Changes to no counterbore type.	Quotation

RETURN PINS FOR MIDDLE · LARGE MOLD

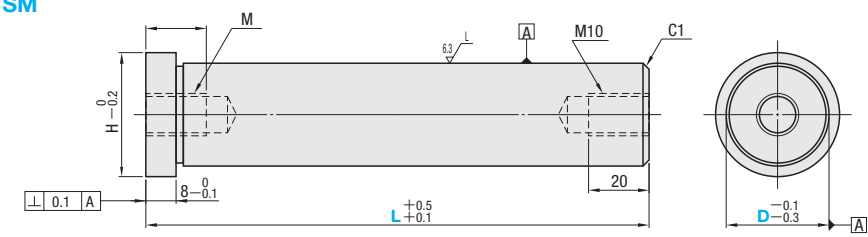
—TAPPED TYPE—

Non JIS material definition is listed on P.1351 - 1352

RoHS



RP8TSM



S45C
(Unannealed steel)

H	Head Tap size		Part Number Type	D	L 1mm increments
	M	ℓ			
30	8	15	RP8TSM	25	100 ~ 700
35	10	20		30	100 ~ 700
37				32	100 ~ 700
45				40	100 ~ 700

If RP8TSM is used with a return pin coil spring, there may be a case where the spring get scratched and destroyed. Make sure to take this into account when selecting it.



Order

Part Number — L
RP8TSM30 — 342



Days to Ship

Quotation



Price

Quotation



Alterations

Part Number — L — (NM1 · NM2 · NM3)
RP8TSM25 — 199 — NM1

Alterations	Code	Spec.	1Code
	NM1	Leaves the tip without a tap. ⊗ Combination with NM2 · NM3 not available	Quotation
	NM2	Leaves the head without a tap. ⊗ Combination with NM1 · NM3 not available	
	NM3	Leaves the tip and head without taps. ⊗ Combination with NM1 · NM2 not available	

Components of Effector Space