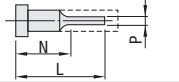


Dies Steel
SKD61 equivalent
+
Nitrided

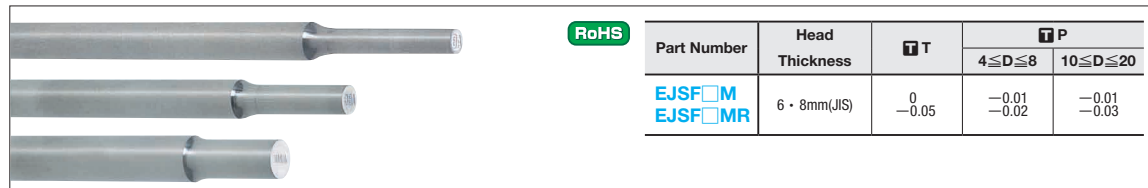
STEPPED EJECTOR PINS WITH ENGRAVING

— L · P · N DIMENSION DESIGNATION TYPE —

L · N · P dimension designation type

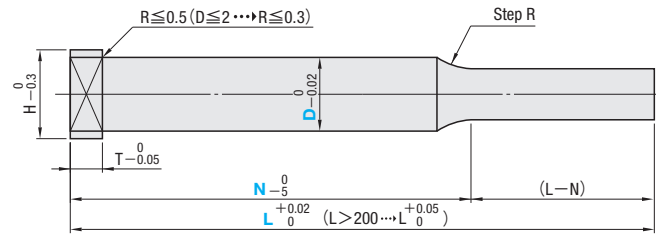


Ⓢ Non JIS material definition is listed on P.1351 - 1352



RoHS

Part Number	Head Thickness	T	P	
			4 ≤ D ≤ 8	10 ≤ D ≤ 20
EJSF□M EJSF□MR	6 · 8mm(JIS)	0 -0.05	-0.01 -0.02	-0.01 -0.03



※ Range of guaranteed shaft diameter precision (D) (Details P.1301)
※ Step R (Details P.1302)

□ SKD61 equivalent + Nitrided
▣ Surface900HV ~ Base material40 ~ 45HRC
Range of guaranteed base material hardness (Details P.1303)

Ⓢ To determine the engraving position, key flat cutting is made at the standard 0°.

1M · 1MR (1 character)	2M · 2MR (2 characters)	3M (3 characters)	4M (4 characters)	5M (5 characters)
1.50 ≤ P ≤ 19.90	1.50 ≤ P ≤ 19.90	2.80 ≤ P ≤ 19.90	3.60 ≤ P ≤ 19.90	4.50 ≤ P ≤ 19.90

Ⓢ Please place order by the character order of molding products. Ⓢ Refer to P.118 for character font.

JIS head	Part Number		0.01mm increments		1mm increments	Characters for engraving (Round Gothic type)		
	H	T	Type	Character	D		L	P
8	6	EJSF	1M	4	50.00 ~ 300.00	1.50 ~ 3.90	N ≥ L/3 and (L - N) ≥ 10	0 1 2 3 4
				4.5		2.50 ~ 4.40		5 6 7 8 9
				5		3.00 ~ 4.90		A B C D E
				5.5		3.50 ~ 5.40		F G H I J
				6		4.00 ~ 5.90		K L M N O
9	8	EJSF	1MR	7	4.50 ~ 6.40	U V W X Y		
				6.5	4.90 ~ 6.90	Z		
				7	5.90 ~ 7.90	Name		
				8	7.90 ~ 9.90	Slash /		
				10	8.90 ~ 11.90	Greater >		
13	8	EJSF	2MR	11	10.90 ~ 14.90	Less <		
				12	11.90 ~ 15.90	Plus +		
				15	15.90 ~ 19.90	Minus -		
				16		Space		
				20		Centered dot		
21	8	EJSF	2MR	20		Period .		
				21		Order code		
				25		Order code		
						Order code		
						Order code		

- Ⓢ Use Y for indicating (slash), # for -(minus), % for (space), @ for · (centered dot), & for (period).
- Ⓢ 1MR and 2MR are sequential numbering designation. In the case of bulk order of two or more ejector pins with the same size, the sequential numbering engraving is performed.
- Ⓢ In case of 1MR, "0" is next to "9" while "A" is next to "Z".
- Ⓢ In case of 2MR, the 1st digit is sequential, and if next to "9" or "Z", it starts from "0" or "A" while the 2nd digit is increased by one.
- Ⓢ In case of 1MR and 2MR, other engraving characters cannot be used for designation.
- When placing the order for 5 pieces of EJSF1MR2—150—P1.5—1, characters for engraving "1 2 3 4 5"
- When placing the order for 3 pieces of EJSF1MR3—150—P2.5—Z, characters for engraving "Z A B"
- When placing the order for 4 pieces of EJSF2MR4—100—P3.5—01, characters for engraving "01 02 03 04"
- When placing the order for 4 pieces of EJSF2MR4—100—P3.5—A8, characters for engraving "A8 A9 B0 B1"
- When placing the order for 6 pieces of EJSF2MR6—150—P5.5—1X, characters for engraving "1X 1Y 1Z 2A 2B 2C"

Order

Part Number: EJSF 1M 4 — 200.00 — P3.50 — N150 — Characters for engraving: A

Days to Ship **Quotation**

Alterations

Part Number: EJSF3M 5 — 250.00 — P4.50 — N130 — Characters for engraving: ABC — (AKC · AWC...etc.) — AWC45

Alterations	Code	Spec.	1Code
	AKC	AKC=1° increments 0 < AKC < 360 No need to designate AKC0	
	AWC	AWC=1° increments 0 ≤ AWC < 360	
	KAC KBC	Varied width parallel flats cutting D/2 ≤ KAC < H/2 KBC = 0.1mm increments only KAC < KBC < H/2 Combination with other key flat cutting not available	
	ARC	ARC=1° increments 0 ≤ ARC < 360	
	ADC	ADC=1° increments 0 ≤ ADC < 360	
	KGA	KGA=1° increments 0 < KGA < 360	
	KGB	KGB=1° increments 0 < KGB < 360	

Quotation

Alterations	Code	Spec.	1Code
	TC	TC=0.1mm increments T/2 ≤ TC < T (Dimensions L and N remain unchanged.) T - TC ≤ Lmax - L	
	HC	HC=0.1mm increments D + 1 ≤ HC < H	
	HCC	HCC=0.1mm increments D + 1 ≤ HCC < H - 0.3	
	NHC	Numbering on the head How to order P.128	
	NHN	Automatic sequential numbering on the head How to order P.128	
	EC	Engraving depth alteration 0.2 ~ 0.3 [Designation method] EC0.1 0.2 ~ 0.3 [Designation method] EC0.3	

Quotation

Stepped Ejector Pins

Dies Steel SKD61 equivalent + Nitrided

Relationship between Shaft Diameter (P) and Character Size (Q, W)

No. of characters	P	Q	W
1M 1MR (1 character)	1.50 ~ 1.99	1.2	0.6
	2.00 ~ 2.49	1.5	0.8
	2.50 ~ 3.49	2.0	1.0
	3.50 ~ 4.49	3.0	1.5
	4.50 ~ 5.49	4.0	2.0
	5.50 ~ 11.99	5.0	2.5
2M 2MR (2 characters)	12.00 ~ 19.90	9.0	4.5
	1.50 ~ 1.90	0.7	1.1
	2.00 ~ 2.29	0.8	1.2
	2.30 ~ 2.99	1.0	1.3
	3.00 ~ 3.99	1.5	2.0
	4.00 ~ 4.99	2.0	2.6
3M (3 characters)	5.00 ~ 5.99	2.5	3.3
	6.00 ~ 7.99	3.0	3.9
	8.00 ~ 11.99	4.0	5.2
	12.00 ~ 19.90	6.5	8.0
	2.80 ~ 3.09	0.8	1.8
	3.10 ~ 4.49	1.0	2.1
4M (4 characters)	4.50 ~ 5.49	1.5	3.2
	5.50 ~ 6.99	2.0	4.2
	7.00 ~ 11.99	2.5	5.3
	12.00 ~ 19.90	4.5	8.5
	3.60 ~ 3.89	0.8	2.4
	3.90 ~ 5.49	1.0	2.9
5M (5 characters)	5.50 ~ 6.99	1.5	4.4
	7.00 ~ 11.99	2.0	5.8
	12.00 ~ 19.90	3.5	8.8
	4.50 ~ 4.99	0.8	3.0
	5.00 ~ 6.99	1.0	3.7
	7.00 ~ 11.99	1.5	5.6
12.00 ~ 19.90	3.0	9.0	

Ejector pins	Finished products	
Reversed reading (Concave character)	Right reading (Convex character)	
Engraving Details	Width of engraving (a)	0.1 × Q ~ 0.2 × Q
	Angle of engraving (b°)	20° ± 2°
	Depth of engraving (e)	0.2 ± 0.05

