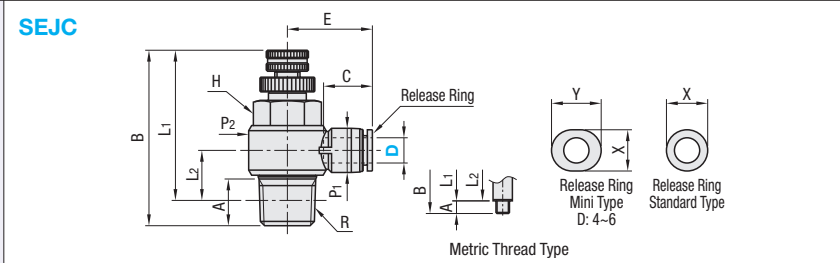
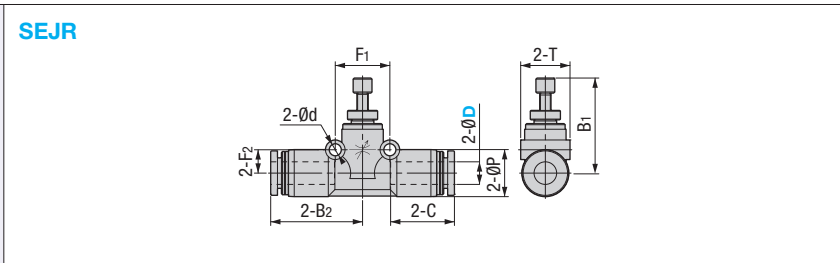


Throttle Valves



Part Number Type	D	Nominal	R	A	B		L1		L2	P1	P2	C	E	Opposite Side H	X	Y	Mass (g)	Unit Price (1-9 pc(s))	Volume Discount Rate (10-30)
					Max	Min	Max	Min											
SEJC	4	M5	M5x0.8	2.9	29.7	27	26.8	24.1	6.7	8	9.8	11	15.4	8	7.8	9.8	7.9		
		1	R1/8	8	41.3	35.2	37.3	31.2	10.7		14.4		17.7						
	6	M5	M5x0.8	2.9	29.7	27	26.8	24.1	7.58	10.5	9.8	11.6	17.5	8	9.8	11.8	19		
		1	R1/8	8	41.3	35.2	37.3	31.2	10.7		14.4		20.2						
	8	1	R1/8	8	41.3	35.2	37.3	31.2	11.9	14.4	14.4	18.1	14.4	10	13.8	-	22		
		2	R1/4	11.1	48.7	41.9	42.7	35.9	13.2		18.4		28.4						
10	2	R1/4	11.1	48.7	41.9	42.7	35.9	14.8	17.6	18.4	20.2	30.9	14	16.8	-	44			

For orders larger than indicated quantity, please check with WOS.

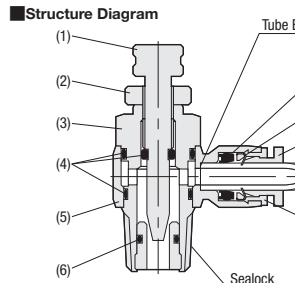
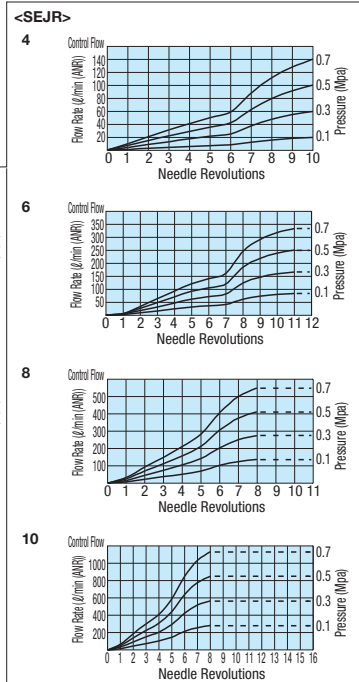
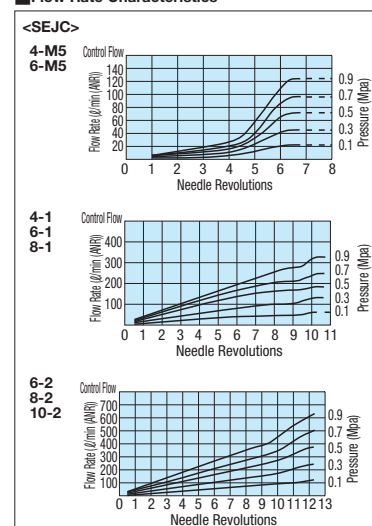


Part Number Type	D	B1		B2	ØP	T	C	Ød	F1	F2	Mass (g)	Unit Price (1-9 pc(s))	Volume Discount Rate (10-30)
		Max	Min										
SEJR	4	20.5	18.1	21	10	10.5	14.9	3.2	12.7	4.8	8.9		
	6	25.4	21.6	24.4	12.5	13.1	17	3.2	14.8	6.2	14		
	8	28.3	24.6	28	14.8	15.4	18.1	3.2	18.2	7.2	25		
	10	32.8	28.9	31.8	18.2	19.7	20.2	4.2	22.2	8.7	45		

For orders larger than indicated quantity, please check with WOS.

Ordering Example: Part Number SEJC4 - Nominal M5

Features / Specifications
 Features: Regardless of free flow or control flow, air can be controlled from either right or left side.
 Applicable Fluid: Air
 Operating Temp. Range: 0 ~ 60°C
 Operating Pressure Range: 0~0.9MPa
 *Operating pressure is set at ambient temperature (20°C).



Structure Diagram (Elbow: SEJC)

No.	Part Name	Material
(1)	Needle	Brass, Electroless Nickel Plating
(2)	Lock Nut	Aluminum
(3)	Metal Body	Brass, Electroless Nickel Plating
(4)	O-Ring	Nitrile Rubber
(5)	Resin Body	Polybutylene Terephthalate
(6)	O-Ring	Nitrile Rubber
(7)	Elastic Sleeve	Nitrile Rubber
(8)	Lock Pawl	Stainless Steel
(9)	Release Ring	Polyacetal
(10)	Guide Ring	Brass, Electroless Nickel Plating