

Shaft Supports - Flanged Mount, Standard

Through/Tapped Mounting Holes

For products other than catalog specifications, see P.131.

Features: Tapped Mounting Hole Type is suitable when tapping is difficult due to insufficient mounting plate strength (aluminum) or thickness.

Standard Through Mounting Holes, Tapped Mounting Holes



RoHS10

Type	Through Mounting Holes			Tapped Mounting Holes			Material	Surface Treatment
	Round Flanged	Square Flanged	Compact Flanged	Round Flanged	Square Flanged	Compact Flanged		
Standard	STHRB	STHSB	STHCB	STHRBT	STHCBT		Steel for General Structure	Black Oxide
	STHR	STHS	STHC	STHRT	STHCT			Electroless Nickel Plating
	SSTHR	SSTHS	SSTHC	SSTHRT	SSTHCT		SUS304	-
	ATHR	ATHS	ATHC	-	-			Aluminum Alloy

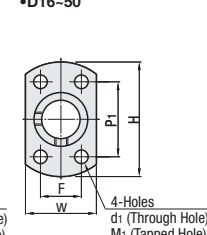
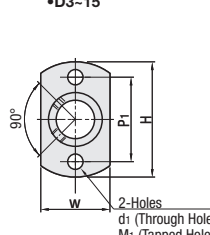
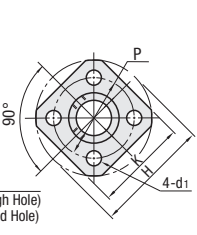
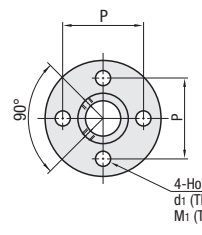
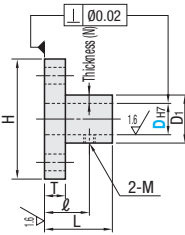
For included Hex Socket Set Screw, refer to Alterations.

6.3 / (1.6)

Round Flanged

Square Flanged

Compact Flanged



Part Number	Type	DH7	Sleeve Thickness (N)	L	D1	H	T	ℓ	M (Coarse)	P	K	W	P1	F	d1	M1 (Coarse)			
																	Through Mounting Holes	Tapped Mounting Hole	
Through Mounting Holes	Round Flanged	3	+0.010	2.5	10	8	22	3	7	M3	15	16	8	15	-	3.5	-		
		4	+0.012		10	9	24	3	7		17	19	9	17					
		5	+0.012		12	10	25	3.5	7		18	20	10	18					
	Square Flanged	6	+0.015	2	15	12	28	3.5	7	M4	20	22	12	20	-	4.5	M4		
		8	+0.015		16	12	28	5	10		20	22	16	20					
		10	+0.015		20	14	30	12	12		22	23	18	22					
	Compact Flanged	12	+0.018	2.5	24	16	36	6	15	M4	26	28	20	26	-	4.5	M4		
		13	+0.018		28	18	38				18	18	28	30				22	28
		15	+0.018		30	20	40				18	18	30	32				24	30
	Tapped Mounting Hole (only applicable to D dimension denoted with * mark)	Round Flanged	16	+0.021	4	32	22	42	8	20	M5	32	33	26	28	16	5.5	M5	
18			+0.021	32		28	50	8				20	39	39	32	31			22
20			+0.021	32		28	50	8				20	39	39	32	31			22
Square Flanged		25	+0.021	4	38	33	55	8	23	M6	44	44	37	36	24	6.6	M6		
		30	+0.021		38	38	66	10	24		52	52	42	41	27				
		35	+0.021		45	45	80	10	30		65	65	55	56	33				
Compact Flanged		40	+0.025	10	60	60	90	10	30	M8	75	75	65	65	38	9	M8		
		50	+0.025		70	100	100	10	30		85	90	75	74	43				

Only Steel for General Structure and SUS304 are applicable to D dimension 8M and 10M (Aluminum Alloy is not applicable).

D	Unit Price											
	Round Flanged			Square Flanged			Compact Flanged					
	STHRB	STHR	SSTHR	ATHR	STHSB	STHS	SSTHS	ATHS	STHCB	STHC	SSTHC	ATHC
3												
4												
5												
6												
8-8M*												
10-10M*												
12*												
13												
15*												
16*												
18												
20*												
25*												
30*												
35												
40												
50												

Caution in Selection of Standard Type

Tapped Mounting Hole Type is available only for D dimension denoted with * mark.

Aluminum is not available for products with D dimension 8M and 10M.

Ordering Example: Part Number STHRB3

Shaft Supports - Flanged Mount, Long Sleeve

Long Sleeve

For products other than catalog specifications, see P.131.

Features: Long sleeve enhances the retaining force.

Long Sleeve



RoHS10

Type	Through Mounting Holes			Material	Surface Treatment
	Round Flanged	Square Flanged	Compact Flanged		
Long Sleeve	STHRBL	STHSBL	STHCBL	Steel for General Structure	Black Oxide
	STHRL	STHSL	STHCL		Electroless Nickel Plating
	SSTHRL	SSTHSL	SSTHCL	SUS304	-
	-	-	-		-

For included Hex Socket Set Screw, refer to Alterations.

6.3 / (1.6)

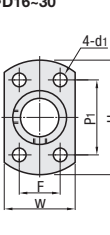
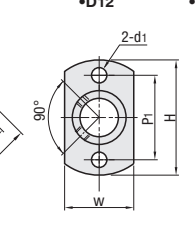
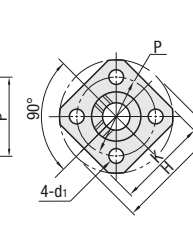
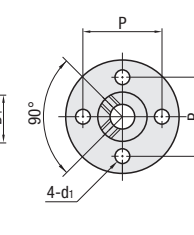
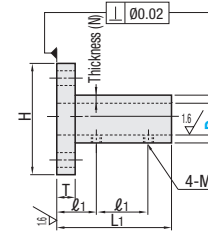
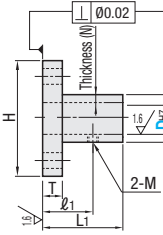
D12

D16-30

Round Flanged

Square Flanged

Compact Flanged



Part Number	Type	DH7	Sleeve Thickness (N)	L1	D1	H	T	ℓ1	M (Coarse)	P	K	W	P1	F	d1				
																Through Mounting Holes	Tapped Mounting Hole		
Through Mounting Holes	Round Flanged	12	+0.018	2	30	16	36	6	15	M4	26	28	20	26	-	4.5			
		16	+0.018		3	48	22				42	16	32	33			26	28	16
		20	+0.021		4	48	28				50	8	16	M5			39	39	32
	Square Flanged	25	+0.021	33		55	8	19	44	44	37	36	24						
		30	+0.021	38		66	10	19	52	52	42	41	27						
	Compact Flanged	30	+0.021	4	57	33	55	8	19	M6	52	52	42	41	27	6.6			

D	Unit Price								
	Round Flanged			Square Flanged			Compact Flanged		
	STHRBL	STHRL	SSTHRL	STHSBL	STHSL	SSTHSL	STHCBL	STHCL	SSTHCL
12									
16									
20									
25									
30									

Ordering Example: Part Number STHRL12

Alterations: Part Number - (MB) STHR10 - MB STHRL20 - MB

Alterations	Hex Socket Set Screw Included	
Code	MB	
Spec.	Hex socket set screws come as a set. Screw head can protrude from outer cylinder (D1). Included screws are SCM435 (Black Oxide) for Black Oxide and Black Anodized Products. For products other than above, SUS screws are included. Long Sleeve Type comes with 4 set screws; others come with 2 set screws.	
	D	M x Length
	3-4-5-6-8-10	M3x3
	8M-10M-12-13-15-16	M4x3
	18-20-25	M5x4
30-35-40-50	M6x5	