

Casters with Mounting Plates / Leveling Mounts

Mounting Plate



RoHS 10

Leveling Mount Unit

Part Number	Type	No.	Allowable Load kN(kgf)	Mass (kg)	Component				Unit Price		Volume Discount Rate
					Plate	Leveling Mount	Screw	Nut	Quantity	Quantity	
HAJPS	5	4.9(500)	0.45	HAJP5	NFJN12-100	CBM5-10	4	HNTT5-5	4		
	6	4.9(500)	0.46	HAJP6	NFJN12-100	CBM6-12	4	HNTT6-6	4		
	8*	16.6(1700)	1.15	HAJP8	NFJN12-100	CBM8-20	4	HNTT8-8	4		
	5050	16.6(1700)	1.15	HAJPC5050	FJFN16-150	CBM6-15	8	HNTT6-6	8		
	6060	16.6(1700)	1.6	HAJPC6060	FJFN16-150	CBM6-15	8	HNTT6-6	8		
	8080	39.2(4000)	2.5	HAJPC8080	FJFN20-150	CBM8-25	8	HNTT8-8	8		
9090	39.2(4000)	2.9	HAJPC9090	FJFN20-150	CBM8-25	8	HNTT8-8	8			

8* is used in common with 8-45. Washers are included with HAJPS8080 only.
 No. 6060, 8080 and 9090 are applicable to HFS6-6060, HFS8-8080 and HFS8-9090.



RoHS 10

Plate with Caster Unit (Caster with Stopper)

Part Number	Type	No.	Allowable Load kN(kgf)	Mass (kg)	Component				Unit Price		Volume Discount Rate
					Plate	Caster	Screw	Nut	Quantity	Quantity	
HCHPS	5	0.9(100)	0.69	HAJP5	HCHAS12-100	CBM5-10	4	HNTT5-5	4		
	6	1.4(150)	0.7	HAJP6	HCHAS12-150	CBM6-12	4	HNTT6-6	4		
	8*	1.7(170)	1.8	HAJP8	HCHAS16-170	CBM8-20	4	HNTT8-8	4		

8* is used in common with 8-45.
 No. 5 and 6 apply to extrusions with 6-slot Width 20 Square Type and 8-slot Width 30 Square Types. No. 8 applies to extrusions 10-slot Width 40 and 45 Square Type.



RoHS 10

Leveling Mount + Plate with Caster Unit

Part Number	Type	No.	Caster Allowable Load kN(kgf)	Leveling Mount Allowable Load kN(kgf)	Mass (kg)	Component						Unit Price		Volume Discount Rate	
						Plate	Leveling Mount	Caster		Extrusion Mounting		Nut	Quantity		Quantity
HAJCHP	5	0.9(100)	4.9(500)	0.86	HAJPC5	NFJN12-100	HCHA12-100	-	-	CBM5-10	4	HNTT5-5	4		
	2525	16.6(1700)	1.62	HAJPC2525	NFJN12-100	HCHA12-100	-	-	CBM5-10	4	HNTT5-5	4			
	54040	16.6(1700)	1.62	HAJPC54040	NFJN16-150	CHJF50S	CBM6-10	4	CBM5-15	8	HNTT6-6	4			
	6	1.4(150)	4.9(500)	0.9	HAJPC6	NFJN12-100	HCHA12-150	-	-	CBM6-12	4	HNTT6-6	4		
	8*	16.6(1700)	2.2	HAJPC8	NFJN12-100	HCHA12-150	CBM6-12	4	CBM8-20	4	HNTT8-8	4			
	5050	1.7(170)	16.6(1700)	2.2	HAJPC5050	FJFN16-150	CHJF50S	CBM6-10	4	CBM6-15	8	HNTT6-6	8		
	6060	1.4(150)	16.6(1700)	1.9	HAJPC6060	FJFN16-150	CHJF50S	CBM6-10	4	CBM6-15	8	HNTT6-6	8		
	8080	2.9(300)	39.2(4000)	3.4	HAJPC8080	FJFN20-150	CSHN-S75-H	CBM8-12	8	CBM8-25	8	HNTT8-8	8		
	9090	2.9(300)	39.2(4000)	3.9	HAJPC9090	FJFN20-150	CSHN-S75-H	CBM8-12	8	CBM8-25	8	HNTT8-8	8		

8* is used in common with 8-45. Washers are included with HAJCHP8080 only.

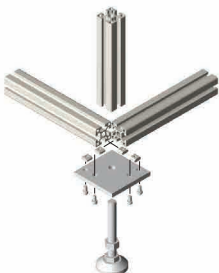


Ordering Example Part Number HAJCHP6060

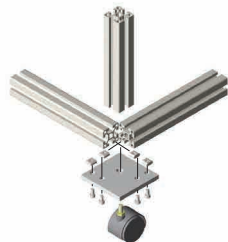


Example Mounting Example

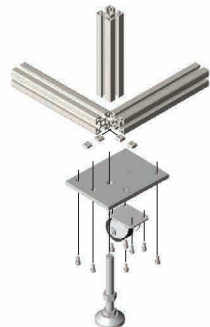
Leveling Mount Plate Mounting



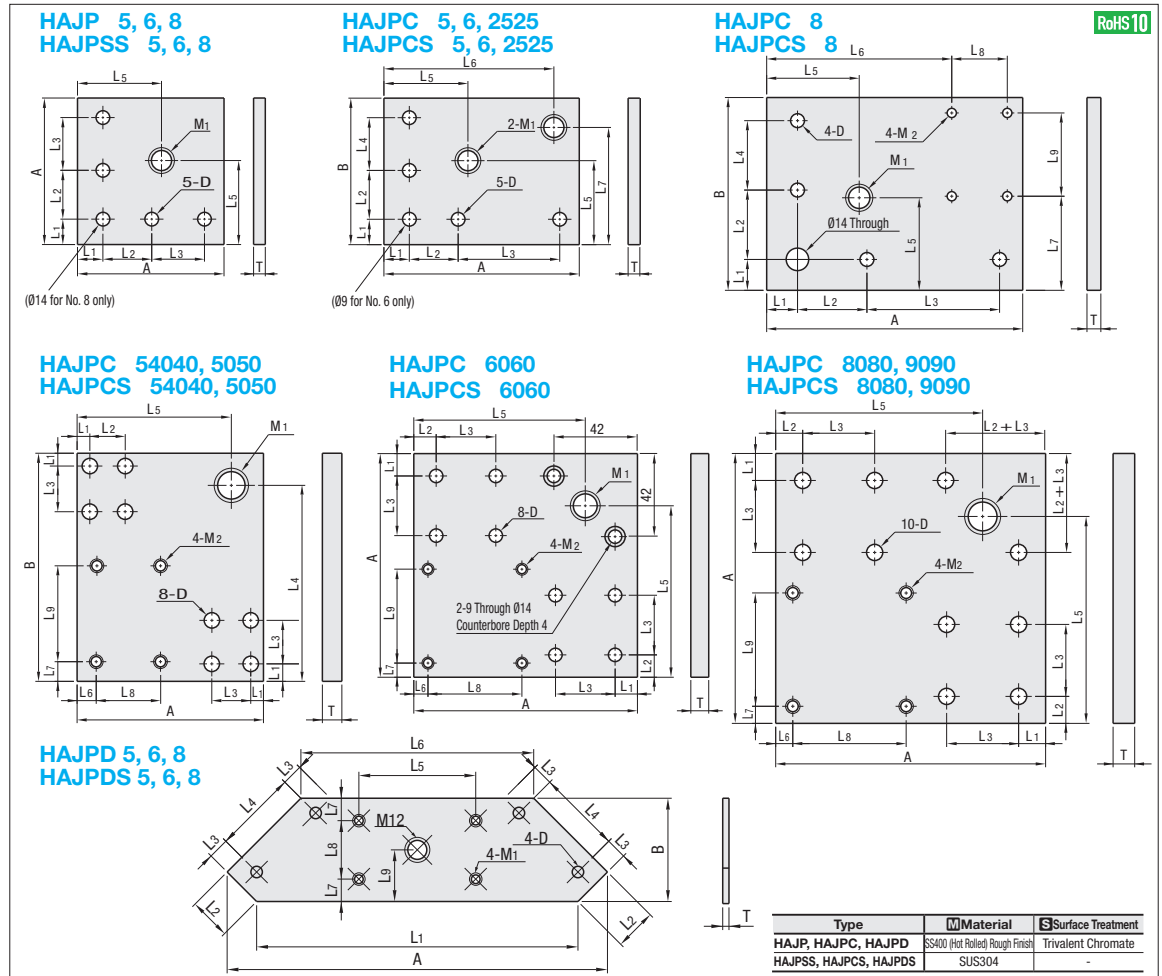
Mounting of Plate with Caster



Mounting of Leveling Mount + Plate with Caster



Mounting of HAJPD (Next Page)



Type	Material	Surface Treatment
HAJP, HAJPC, HAJPD	S5400 (Hot Rolled) Rough Finish	Trivalent Chromate
HAIJSS, HAJPCS, HAJPDS	SUS304	-

Part Number	Type	No.	A	B	T	M1	M2	D	L1	L2	L3	L4	L5	L6	L7	L8	L9	Mass (kg)	HAJP, HAJPC, HAJPD			HAIJSS, HAJPCS, HAJPDS		
																			Unit Price	Volume Discount Rate	Unit Price	Volume Discount Rate	Unit Price	Volume Discount Rate
HAJP HAIJSS	5	75	-	6	12	-	-	5.5	8	30	27	-	43	-	-	-	-	0.24						
	6	100	-	9	16	-	-	7	13	25	31	-	60	-	-	-	-	0.65						
	8*	100	-	9	16	-	-	9	20	45	25	-	60	-	-	-	-	0.65						
HAJPC HAJPCS	5	135	75	6	12	-	-	5.5	8	30	27	43	122	60	-	-	-	0.45						
	2525	100	125	9	16	6	-	10.5	8	20	20	107	82	11	10	36	54	0.82						
	54040	100	125	9	16	6	-	8	20	20	107	82	11	10	36	54	0.82							
	6	135	75	6	12	-	-	7	13	25	27	31	43	122	60	-	-	0.44						
	8*	166	125	9	16	6	-	7	20	45	25	65	106	10	10	36	54	1.03						
	5050	150	-	12	20	8	-	7	10	60	20	65	106	10	10	36	54	1.03						
	6060	125	-	12	20	8	-	12	12	30	-	98	17	8	-	-	-	2						
8080	150	-	12	20	8	-	9	15	15	40	-	115	9.5	9.5	63	63	2							
9090	165	-	12	20	8	-	9	15	15	45	-	130	14	14	63	63	2.5							
HAJPD HAJPDS	5	184	50	6	6	-	-	5.5	154	20	10	40	56	112	11	28	25	0.53						
	6	237	74	9	8	-	-	7	193	30	20	50	55	129	16	42	37	0.9						
	8	250	82	12	12	-	-	9	250	40	20	55	55	144	20	42	41	2.1						

8* is used in common with 8-45.
 No. 6060, 8080 and 9090 are applicable to HFS6-6060, HFS8-8080 and HFS8-9090.
 No. 5 and 6 apply to extrusions with 6-slot Width 20 Square Type and 8-slot Width 30 Square Types. No. 8 applies to extrusions 10-slot Width 40 and 45 Square Type.
 No. 54040 is applicable to the extrusion HFS5-4040. No. 5050 is applicable to the extrusion HFS6-5050.



Ordering Example Part Number HAJJP5



Example See left-hand page.