

Integrated Casters & Leveling Mounts

Standard, Conductive, Side Mount



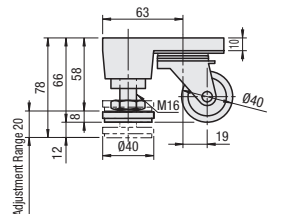
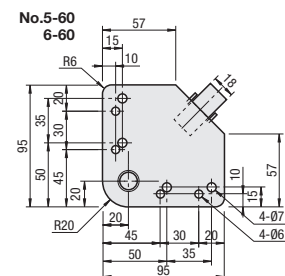
No.	Caster		Jack Bolt	
	Material	Surface Treatment	Material	Surface Treatment
60	ADC12	Black Paint	SS400	Trivalent Chromate
130	ADC12	Black Paint	SS400	Trivalent Chromate
250	SPHC	Trivalent Chromate (Black)	SS400	Trivalent Chromate
350	SPHC	Trivalent Chromate (Black)	SS400	Trivalent Chromate
500	FCD45	Black Paint	SS400	Trivalent Chromate

Only HCFT8-500 is phenol (black).

Material of jack bolt and caster is SUS304 for SHCFT or SHCFTD.

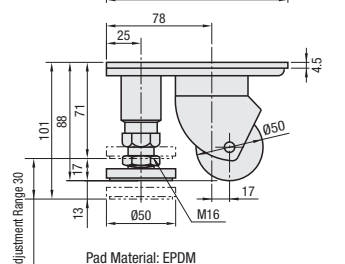
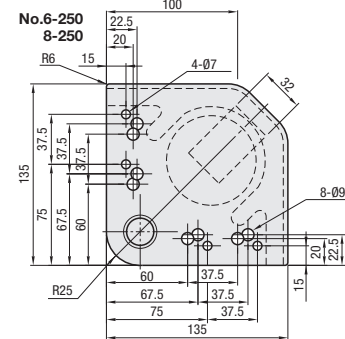
Swiveling Caster

HCFT



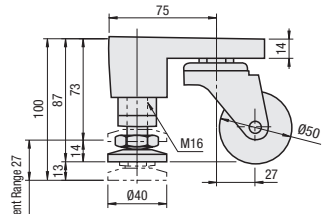
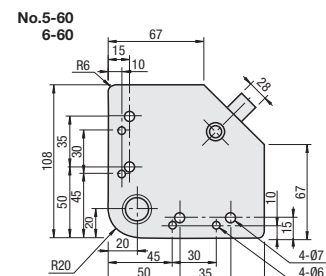
Pad Material: EPDM
Applicable screws and nuts are common to M5 and M6.

HCFT HCFTM HCFTU HCFTD



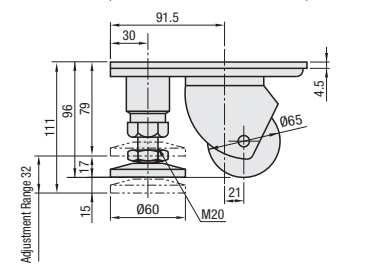
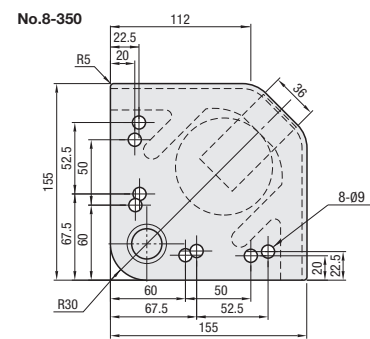
Pad Material: EPDM
Applicable screws and nuts are common to M6 and M8.

SHCFT



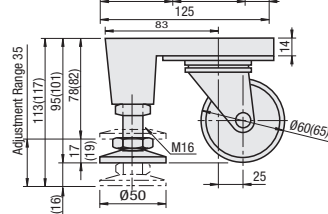
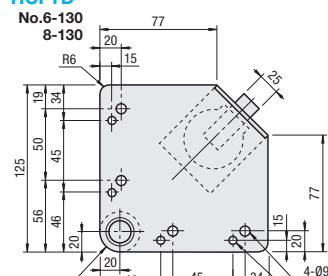
Applicable screws and nuts are common to M5 and M6.

SHCFT SHCFTM SHCFTD



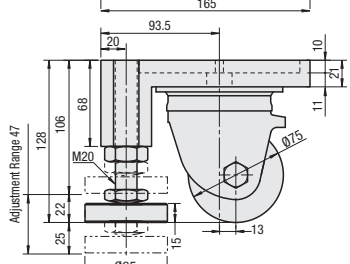
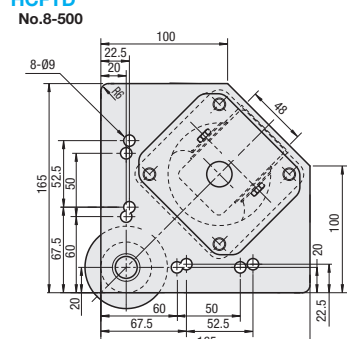
The adjusting bolt does not protrude from the top face.
The contact angle of the leveling mount is within approximately $\pm 1.0^\circ$.

HCFT SHCFT HCFTM SHCFTD



The values in () are for Stainless Steel Pad Type.
Applicable screws and nuts are common to M6 and M8.

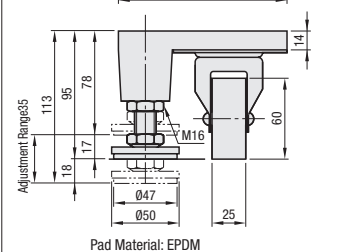
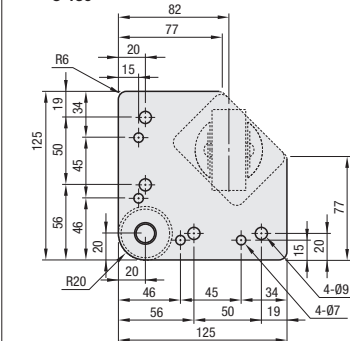
HCFT HCFTM HCFTD



When moving the unit using the casters, raise the leveling mounts completely.

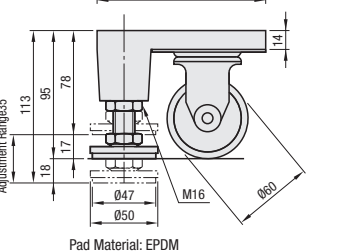
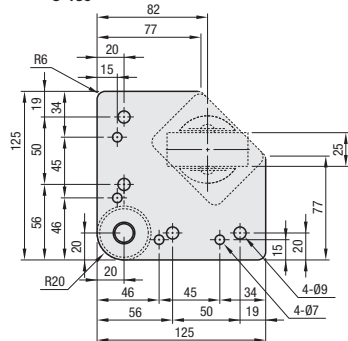
Fixed Caster

HCFTK-R No. 6-130 8-130



Pad Material: EPDM
Caster does not swivel.

HCFTK-L No. 6-130 8-130



Pad Material: EPDM
The adjusting bolt does not protrude from the top face.
The contact angle of the leveling mount is within approximately $\pm 1.0^\circ$.

Caster Type	Part Number	No.	Allowable Load/Mass			Screw, Nut		Unit Price 1 - 50 pc(s).				
			No. Load	kg	N	g	Screw	Nut	HCFT	HCFTU	HCFTM	HCFTD
Swivel	HCFT	60	5	60	588	600	CBM5-15	HNTT5-5	-	-	-	-
			6	130	1275	1100	CBM6-15	HNTT6-6	-	-	-	-
Swivel	HCFTM	130	8	130	1275	1100	CBM8-25	HNTT8-8	-	-	-	-
			6	130	1275	1100	CBM6-20	HNTT6-6	-	-	-	-
Fixed	HCFTK-L	130	8	130	1275	1100	CBM8-25	HNTT8-8	-	-	-	-
			6	130	1275	1100	CBM6-20	HNTT6-6	-	-	-	-
Swivel	HCFTU	250	8	250	2452	1445	CBM8-12	HNTT8-8	-	-	-	-
			6	250	2452	1445	CBM6-12	HNTT6-6	-	-	-	-
Swivel	HCFTD	350	8	350	3432	2170	CBM8-15	HNTT8-8	-	-	-	-
			6	350	3432	2170	CBM6-15	HNTT6-6	-	-	-	-
Swivel	HCFTK-R	500	8	500	4902	5600	CBM8-30	HNTT8-8	-	-	-	-
			6	500	4902	5600	CBM6-30	HNTT6-6	-	-	-	-

Mounting height of HCFT6-130, HCFT8-130, HCFTK6-130 and HCFTK8-130 is the same, which enables combined use in parallel.
The stated allowable load is for the caster. Consider the allowable load of the leveling mount to be the same.

Caster Type	Part Number	No.	Allowable Load/Mass			Screw, Nut		Unit Price 1 - 50 pc(s).		
			No. Load	kg	N	g	Screw	Nut	SHCFT	SHCFTD
Swivel	SHCFT	60	5	60	588	600	SCB5-20	HNTTSN5-5	-	-
			6	130	1275	1100	SCB6-20	HNTTSN6-6	-	-
Swivel	SHCFTD	130	8	130	1275	1100	SCB8-25	HNTTSN8-8	-	-
			6	130	1275	1100	SCB6-25	HNTTSN6-6	-	-

Pad and caster are made of stainless steel (SUS304).
The stated allowable load is for the caster. Consider the allowable load of the leveling mount to be the same.

Alterations Part Number - (SET, BL)
HCFT6-130 - SET

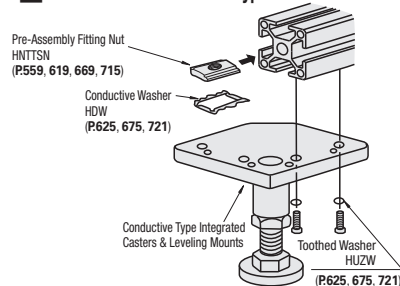
Alteration Code	Spec.	Integrated Caster Unit				Component			
		Type	No. Load	Screw	Nut	Quantity	Nut	Quantity	
Applicable Screw and Nut Set	Applicable screws and nuts come in a set.	HCFT	5	60	CBM5-15	HNTT5-5	4	4	
		HCFT	6	130	CBM6-15	HNTT6-6	4	4	
		HCFT,HCFTK,HCFTM,HCFTD	6	130	CBM6-20	HNTT6-6	4	4	
		HCFT,HCFTU,HCFTM,HCFTD	6	130	CBM6-12	HNTT6-6	4	4	
		HCFT,HCFTK,HCFTM,HCFTD	8	130	CBM8-25	HNTT8-8	4	4	
		HCFT,HCFTU,HCFTM,HCFTD	8	130	CBM8-15	HNTT8-8	4	4	

Alteration Code	Leveling Mount Length					
	BL100			BL150		
	Load	Height from Floor		Load	Height from Floor	
Spec. Changes the length of standard leveling mounts.	60	78	132	60	78	178
	130	113	152	130	113	200
	250	101	145	250	101	191
	350	111	150	350	111	200

The height from the floor can be increased by using a longer leveling mount. However, the leveling mount sticks out from the plate surface.

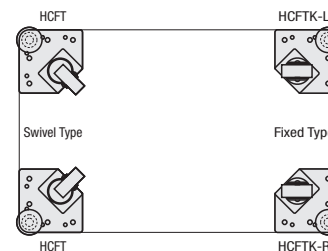
Ordering Example Part Number
HCFT6-130
HCFTK-L6-130

How to Install Conductive Type



Conductive washers and toothed washers are not included with Conductive Type.

Example



Example

