

Slide Locks / Hooks

Grip Handles for Aluminum Extrusions / Reinforcement Covers

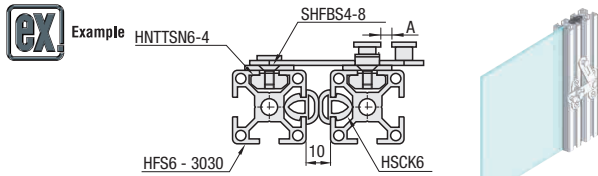
Slide Locks **HSUKJ**

Material: SUS304
Surface Treatment: Buffered Finish

Part Number Type	No.	L	Screw, Nut		Unit Price 1 pc. / 2 pcs.	Volume Discount Rate 3~120
			Screw	Quantity		
HSUKJ	5	61	SHFBS4-6	4	HNTASN5-4	4
	6	71	SHFBS4-8	4	HNTASN6-4	4
	8	81	SHFBS4-10	4	HNTASN8-4	4

This product is for mounting to aluminum extrusions only.

Ordering Example **Part Number**
HSUKJ5



Keep gap A larger than 4mm.
(In the app. example, the gap is 4.5mm.)

Alterations **Part Number** - (SET)
HSUKJ5 - SET

Alterations	Code	Spec.	Type	No.
Set of applicable Screws and Nuts	SET	Applicable Screw	HSUKJ	5
				6
				8

Hooks

Type	Shape J	Shape T	Material	Surface Treatment
HKKJ	HKKJ	HKKT	SUS304	Buffered Finish

HKKJ **HKKT**

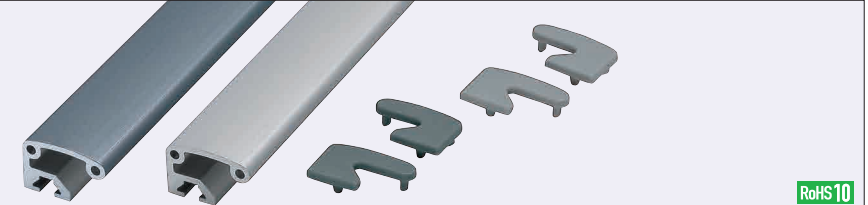
Part Number Type	Allowable Load (N)	Mass (g)	Unit Price 1 - 9 pc(s).	Volume Discount Rate 10-50
HKKJ	196	36		
HKKT	196	45		

Ordering Example **Part Number**
HKKJ
HKKT

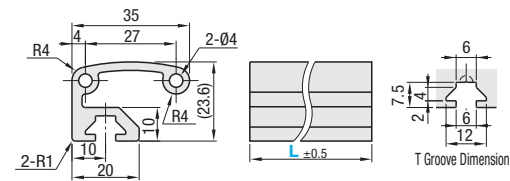


Recommended Screws and Nuts when Mounting on the Aluminum Extrusions

Applicable Extrusion	Screw	Quantity	Post-Assembly Fitting Nut	Quantity
HFS5	SHFBS5-8	2	SHNTP5-5	2
HFS6	SHFBS5-10	2	SHNTP6-5	2
HFS8(8-45)	SHFBS5-15	2	SHNTP8-5	2

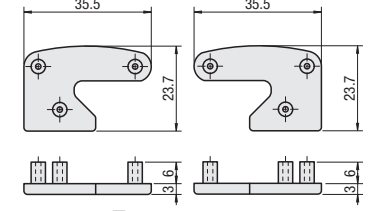


Handle **HFHDL5-35**
HFHDLB5-35 (Black Anodize)



Applicable nut is HNTT5.

Handle Cover **HFC5-35L** **HFC5-35R**



(Handle) Material: A6N01SS-T5
(Handle) Surface Treatment: Anodize
(Handle Cover) Material: Polyamide (Black, Light Gray)

Handle

Part Number	L 1mm Increment	Mass kg/m	Sectional Area mm ²	Unit Price Less than 300mm 1 ~ 50 pc(s).	Unit Price/m 300mm or more 1 ~ 50 pc(s).
HFHDL5-35 HFHDLB5-35 (Black Anodize)	50~2000	0.73	271		

Handle Cover

Part Number	Color	Mass (g)	Unit Price 1 - 9 pc(s).	Volume Discount Rate 10-19	Volume Discount Rate 20-50
HFC5-35L	B (Black)	1.9			
HFC5-35R	S (Light Gray)				

Light gray is the default color unless specified.

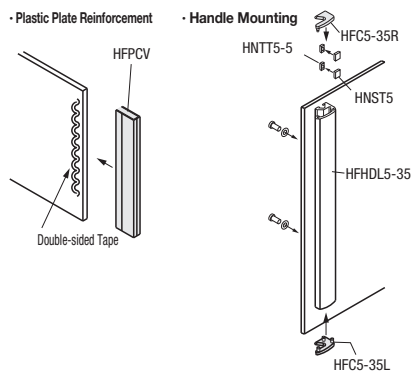
Reinforcement Covers **HFPCV3** **HFPCV5**

Material: A6063S-T5
Surface Treatment: Anodize

Part Number Type	No.	L 1mm Increment	Mass kg/m	Sectional Area mm ²	300mm or Less		300mm or More	
					Unit Price 1 ~ 9 pc(s).	Volume Discount Rate 10-19	Unit Price/m 1 - 9 pc(s).	Volume Discount Rate/m 10-19
HFPCV	3	50~3000	0.12	45.4				
	5							

Ordering Example **Part Number** - L, Color
HFHDL5-35 - 400
HFC5-35L - S
HFPCV3 - 800

Example



Alterations **Part Number** - L - (Alteration Code)
HFPCV5 - 300 - LCT45

Alterations	45° Cut	
Code	LCT45	RCT45
Spec.	One End 45° Miter Cut Ex. LCT45	
HFPCV	3 5	450 450