

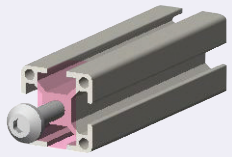
# Tapping

Blind Joints which require this alteration

Screw Joints  
P552, etc.

Simple Joints  
P604

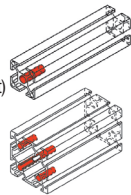
Adds tapped holes on extrusion ends.



**Left Side**

LTP  
LHP

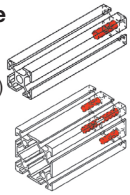
(Heli-Coil Insert)



**Right Side**

RTP  
RHP

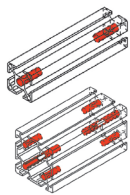
(Heli-Coil Insert)



**Both Sides**

TPW  
HPW

(Heli-Coil Insert)



The number of tap varies depending on the extrusion type (the number of pilot hole for tapping in the end). See each product page for the tapping positions.

For specifying tapping hole dia. and depth of this alteration, check for the list of alteration fees.

See the table below for the applicable extrusions and alteration charges. Indicated with "-" in the table are not applicable.

Alterations				Tapping End Tapping								
Code	Type	No.	Page	Tap Shape	Number of Tapped Holes (per End)	Left	Right	Both	Tap Shape	Left	Right	Both
Four-Side Slots	HFS5 NFS5 CAFS HFSY5	2020	P529	M5 Depth 15	1	LTP	RTP	TPW	M3 Depth 6			
		2040	P530									
		2060	P531									
		2080	P532									
		2120	P533									
	HFS30A HFS30B HFS30C	4040	P530	M8 Depth 24	2	LTP	RTP	TPW	M5 Depth 10			
		4060	P531									
		4080	P532									
		4100	P533									
		4120	P534									
3-Side Slot 1-Side Flat	HFSF5 NFSF5	2020	P529	M5 Depth 15	1	LTP	RTP	TPW	M3 Depth 6			
		2040	P530									
		2060	P531									
		2080	P532									
		2120	P533									
	HFSST6 NFSST6	4040	P529	M5 Depth 15	1	LTP	RTP	TPW	M3 Depth 6			
		4060	P530									
		4080	P531									
		4100	P532									
		4120	P533									
Two-Side Slots Two Flats	HFSST6 NFSST6	2020	P529	M5 Depth 15	1	LTP	RTP	TPW	M3 Depth 6			
		2040	P530									
		2060	P531									
		2080	P532									
		2120	P533									
	HFSST6 NFSST6	4040	P529	M5 Depth 15	1	LTP	RTP	TPW	M3 Depth 6			
		4060	P530									
		4080	P531									
		4100	P532									
		4120	P533									
Two Slots on Opposite Sides	HFSST6 NFSST6	2020	P529	M5 Depth 15	1	LTP	RTP	TPW	M3 Depth 6			
		2040	P530									
		2060	P531									
		2080	P532									
		2120	P533									
	HFSST6 NFSST6	4040	P529	M5 Depth 15	1	LTP	RTP	TPW	M3 Depth 6			
		4060	P530									
		4080	P531									
		4100	P532									
		4120	P533									
One-Side Slot Three Flats	HFSST6 NFSST6	2020	P529	M5 Depth 15	1	LTP	RTP	TPW	M3 Depth 6			
		2040	P530									
		2060	P531									
		2080	P532									
		2120	P533									
	HFSST6 NFSST6	4040	P529	M5 Depth 15	1	LTP	RTP	TPW	M3 Depth 6			
		4060	P530									
		4080	P531									
		4100	P532									
		4120	P533									
Angled	HFS30A HFS30B HFS30C	20	P532	M5 Depth 15	1	LTP	RTP	TPW	M3 Depth 6			
		2040	P533									
		2060	P534									
		2080	P535									
		2120	P536									
	HFS30A HFS30B HFS30C	40	P637	M8 Depth 36	1	LTP	RTP	TPW	M5 Depth 10			
		4040	P638									
		4060	P639									
		4080	P640									
		4100	P641									
Black Anodize	HFSB5 NFSB5 CAFS HFSY5	2020	P529	M8 Depth 24	1	LTP	RTP	TPW	M5 Depth 10			
		2040	P530									
		2060	P531									
		2080	P532									
		2120	P533									
	HFSB5 NFSB5 CAFS HFSY5	4040	P530	M8 Depth 24	1	LTP	RTP	TPW	M5 Depth 10			
		4060	P531									
		4080	P532									
		4100	P533									
		4120	P534									
Curved	HFSR5	2020	P532	M5 Depth 15	2	LTP	RTP	TPW	M3 Depth 6			
		2040	P533									
		2060	P534									
		2080	P535									
		2120	P536									
	HFSR5	4040	P532	M8 Depth 24	2	LTP	RTP	TPW	M5 Depth 10			
		4060	P533									
		4080	P534									
		4100	P535									
		4120	P536									
Four-Side Slots	HFS6 EFS6 NFS6 CAFS HFSY6	3030	P571	M8 Depth 24	4	LTP	RTP	TPW	M5 Depth 10			
		3060	P572									
		3090	P573									
		3120	P574									
		3150	P575									
	HFS6 EFS6 NFS6 CAFS HFSY6	50100	P579	M8 Depth 24	4	LTP	RTP	TPW	M5 Depth 10			
		50200	P580									
		50300	P581									
		50400	P582									
		50500	P583									
3-Side Slot 1-Side Flat	HFSF6 NFSF6	3030	P576	M8 Depth 24	1	LTP	RTP	TPW	M5 Depth 10			
		3060	P577									
		3090	P578									
		3120	P579									
		3150	P580									
	HFSF6 NFSF6	50100	P579	M8 Depth 24	1	LTP	RTP	TPW	M5 Depth 10			
		50200	P580									
		50300	P581									
		50400	P582									
		50500	P583									
Two-Side Slots Two Flats	HFSST6 NFSST6	3030	P572	M8 Depth 24	1	LTP	RTP	TPW	M5 Depth 10			
		3060	P573									
		3090	P574									
		3120	P575									
		3150	P576									
	HFSST6 NFSST6	50100	P579	M8 Depth 24	1	LTP	RTP	TPW	M5 Depth 10			
		50200	P580									
		50300	P581									
		50400	P582									
		50500	P583									
Two Slots on Opposite Sides	HFSST6 NFSST6	3030	P572	M8 Depth 24	1	LTP	RTP	TPW	M5 Depth 10			
		3060	P573									
		3090	P574									
		3120	P575									
		3150	P576									
	HFSST6 NFSST6	50100	P579	M8 Depth 24	1	LTP	RTP	TPW	M5 Depth 10			
		50200	P580									
		50300	P581									
		50400	P582									
		50500	P583									
One-Side Slot Three Flats	HFSST6 NFSST6	3030	P572	M8 Depth 24	1	LTP	RTP	TPW	M5 Depth 10			
		3060	P573									
		3090	P574									
		3120	P575									
		3150	P576									
	HFSST6 NFSST6	50100	P579	M8 Depth 24	1	LTP	RTP	TPW	M5 Depth 10			
		50200	P580									
		50300	P581									
		50400	P582									
		50500	P583									
Light Type	HFSL6 NFSL6	3060	P573	M8 Depth 24	2	LTP	RTP	TPW	M5 Depth 10			
		3090	P574									
		3120	P575									
		3150	P576									
		3180	P577									
	HFSL6 NFSL6	50100	P579	M8 Depth 24	2	LTP	RTP	TPW	M5 Depth 10			
		50200	P580									
		50300	P581									
		50400	P582									
		50500	P583									
Heavy Type	HFSG6 NFSG6	6060	P575	M8 Depth 24	4	LTP	RTP	TPW	M5 Depth 10			
		6090	P576									
		6120	P577									
		6150	P578									
		6180	P579									
	HFSG6 NFSG6	8060	P575	M8 Depth 24	4	LTP	RTP	TPW	M5 Depth 10			
		8090	P576									
		8120	P577									
		8150	P578									
		8180	P579									
Angled	HFS30A HFS30B HFS30C	30	P578	M8 Depth 24	1	LTP	RTP	TPW	M5 Depth 10			
		3040	P579									
		3060	P580									
		3080	P581									
		3100	P582									
	HFS30A HFS30B HFS30C	45	P686	M8 Depth 24	1	LTP	RTP	TPW	M5 Depth 10			
		4545	P687									
		4590	P688									
		4635	P689									
		4680	P690									
Black Anodize	HFSB6 NFSB6 CAFS HFSY6	3030	P571	M8 Depth 24	4	LTP	RTP	TPW	M5 Depth 10			
		3060	P572									
		3090	P573									
		3120	P574									
		3150	P575									
	HFSB6 NFSB6 CAFS HFSY6	50100	P579	M8 Depth 24	4	LTP	RTP	TPW	M5 Depth 10			
		50200	P580									
		50300	P581									
		50400	P582									
		50500	P583									
Curved	HFSR6	3030	P578	M8 Depth 24	2	LTP	RTP	TPW	M5 Depth 10			
		3060	P579									
		3090	P580									
		3120	P581									
		3150	P582									
	HFSR6	50100	P579	M8 Depth 24	2	LTP	RTP	TPW	M5 Depth 10			
		50200	P580									
		50300	P581									
		50400	P582									
		50500	P583									

For LHP, RHP and HPW, Heli-coil is inserted into the pilot holes to reduce the tapped hole diameter. Heli-coil is not RoHS compliant type.

Ordering Example	Part Number
HFS6 - 3030 - 500 - LTP	
HFS6 - 4080 - 1200 - TPW	

Alterations				Tapping End Tapping								
Code	Type	No.	Page	Tap Shape	Number of Tapped Holes (per End)	Left	Right	Both	Tap Shape	Left	Right	Both