

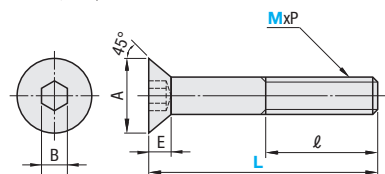
# Screws for Aluminum Extrusions - Single Item / Bulk Packages

■Features: Flathead screws for countersunk holes such as on hinges, etc.

## Hex Socket Flat Head Cap Screws

Type	Material	Surface Treatment
HFBCM	SCM435	Trivalent Chromate
SHFBS	SUS304 Equivalent	-
HFBMB	SCM435	Trivalent Chromate (Black)

HFBCM (Trivalent Chromate)  
SHFBS (Stainless Steel)  
HFBMB (Trivalent Chromate, Black)



ℓ	Part Number Type M - L	MxP	A	E	B	HFBCM		SHFBS		HFBMB	
						Unit Price 1 ~ 39 pc(s)	Volume Discount Rate 40-99 100-120	Unit Price 1 ~ 39 pc(s)	Volume Discount Rate 40-99 100-120	Unit Price 1 ~ 39 pc(s)	Volume Discount Rate 40-99 100-120
Full Thread	HFBCM 3 - 6	3x0.5	6	1.7	2	-	-	-	-	-	-
	SHFBS 3 - 6					-	-	-	-	-	-
	HFBMB 3 - 6					-	-	-	-	-	-
	SHFBS 12 - 20					-	-	-	-	-	-
Full Thread	HFBCM 4 - 6	4x0.7	8	2.3	2.5	-	-	-	-	-	-
	SHFBS 4 - 6					-	-	-	-	-	-
	HFBMB 4 - 6					-	-	-	-	-	-
	SHFBS 12 - 20					-	-	-	-	-	-
Full Thread	HFBCM 5 - 6	5x0.8	10	2.8	3	-	-	-	-	-	-
	SHFBS 5 - 6					-	-	-	-	-	-
	HFBMB 5 - 6					-	-	-	-	-	-
	SHFBS 12 - 20					-	-	-	-	-	-
16	HFBCM 6 - 8	6x1.0	12	3.3	4	-	-	-	-	-	-
	SHFBS 6 - 8					-	-	-	-	-	-
	HFBMB 6 - 8					-	-	-	-	-	-
	SHFBS 12 - 20					-	-	-	-	-	-
Full Thread	HFBCM 8 - 12	8x1.25	16	4.4	5	-	-	-	-	-	-
	SHFBS 8 - 12					-	-	-	-	-	-
	HFBMB 8 - 12					-	-	-	-	-	-
	SHFBS 12 - 20					-	-	-	-	-	-
Full Thread	HFBCM 10 - 16	10x1.5	20	5.5	6	-	-	-	-	-	-
	SHFBS 10 - 16					-	-	-	-	-	-
	HFBMB 10 - 16					-	-	-	-	-	-
	SHFBS 12 - 20					-	-	-	-	-	-

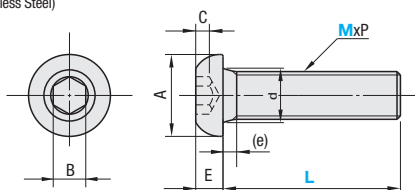
Ordering Example Part Number HFBCM4-6

■Features: Convenient screws for visible locations such as panel mounting.

## Hex Socket Button Head Cap Screws

Type	Material	Hardness	Surface Treatment
HBCBM	SCM435	31HRC	Trivalent Chromate
SBCB	SUS304 Equivalent	-	-

HBCBM (Trivalent Chromate)  
SBCB (Stainless Steel)



JIS B 1174

Part Number Type	M - L	A	E	B	C (Min.)	d	(e) (Max.)	Unit Price			Volume Discount Rate								
								1 ~ 199 pc(s)	200-299	300-499	500-600	200-299	300-499	500-600					
HBCBM	5 - 10	9.5	2.75	3	1.56	5.7	1.6	-	-	-	-	-	-						
	5 - 15							-	-	-	-	-	-						
	6 - 20	10.5	3.3	4	2.08	6.8	2	-	-	-	-	-	-						
	6 - 25							-	-	-	-	-	-						
	8 - 20							14	4.4	5	2.6	9.2	2.5	-	-	-	-	-	-
	8 - 35													-	-	-	-	-	-
SBCB	4 - 12	7.5	2.2	2.5	1.3	4.7	2.1	-	-	-	-	-	-						
	6 - 25							10.5	3.3	4	2.08	6.8	3	-	-	-	-	-	-
	8 - 25	14	4.4	5	2.6	9.2	3.5							-	-	-	-	-	-
	8 - 35													-	-	-	-	-	-
	10 - 30	17.5	5.5	6	3.12	11.2	4.5							-	-	-	-	-	-
	12 - 35							21	6.6	8	4.16	14.2	5.25	-	-	-	-	-	

Ordering Example Part Number HBCBM6-20

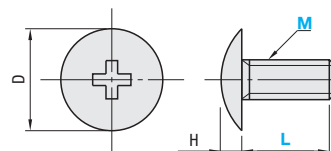
For other specs., refer to P.185.

■Features: Flathead screws for countersunk holes such as on hinges, etc.

## Phillips Truss Machine Screws

Type	Material	Surface Treatment
HCBM	Carbon Steel for Mechanical Structure	Bright Chromate Plating
SHCBM	SUS304 Equivalent	-
HCBMB	Carbon Steel for Mechanical Structure	Trivalent Chromate (Black)

HCBM (Bright Chromate Plating)  
HCBMB (Trivalent Chromate, Black)  
SHCBM (Stainless Steel)



Part Number Type	M - L	D	H	HCBM		SHCBM		HCBMB	
				Unit Price 1 - 79 pc(s)	Volume Discount Rate 80 - 99 pc(s)	Unit Price 1 - 79 pc(s)	Volume Discount Rate 80 - 99 pc(s)	Unit Price 1 - 79 pc(s)	Volume Discount Rate 80 - 99 pc(s)
HCBM 3 - 6	3 - 6	6.9	1.9	-	-	-	-	-	-
SHCBM 3 - 6				-	-	-	-	-	-
HCBM 4 - 5	4 - 5	9.4	2.5	-	-	-	-	-	-
SHCBM 4 - 5				-	-	-	-	-	-
HCBMB 4 - 5				-	-	-	-	-	-
SHCBM 12 - 20				-	-	-	-	-	-
HCBM 5 - 8	5 - 8	12	3.1	-	-	-	-	-	-
SHCBM 5 - 8				-	-	-	-	-	-
HCBMB 5 - 8				-	-	-	-	-	-
SHCBM 12 - 20				-	-	-	-	-	-
SHCBM 15 - 15				-	-	-	-	-	-
SHCBM 30 - 35				-	-	-	-	-	-
HCBM 6 - 10	6 - 10	14	3.7	-	-	-	-	-	-
SHCBM 6 - 10				-	-	-	-	-	-
HCBMB 6 - 10				-	-	-	-	-	-

Ordering Example Part Number HCBM5-12

■Features: Bulk packages of Hex Socket Flat Head Cap Screws and Phillips Truss Machine Screws. Bulk packages are cost effective for in-house stocks and large quantity use.

## Hex Socket Flat Head Cap Screws / Phillips Truss Machine Screws Small Screw Bulk Packages (500 pcs. per package)

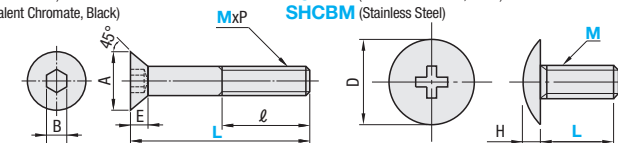


Type	Material	Surface Treatment
Hex Socket Flat Head Cap Screws	SCM435	Trivalent Chromate
	SUS304 Equivalent	-
	SCM435	Trivalent Chromate (Black)
Phillips Truss Machine Screws	Carbon Steel for Mechanical Structure	Bright Chromate Plating
	SUS304 Equivalent	-
	Carbon Steel for Mechanical Structure	Trivalent Chromate (Black)

## Hex Socket Flat Head Cap Screws Bulk Packages Phillips Truss Machine Screws Bulk Packages

HFBCM (Trivalent Chromate)  
SHFBS (Stainless Steel)  
HFBMB (Trivalent Chromate, Black)

HCBM (Bright Chromate Plating)  
HCBMB (Trivalent Chromate, Black)  
SHCBM (Stainless Steel)



## Hex Socket Flat Head Cap Screws

Type	Part Number					MxP	ℓ	A	E	B		
	M	L										
HFBCM SHFBS HFBMB	3	6	8	10	12	SET1	3x0.5	Full Thread	6	1.7	2	
	4	6	8	10	12							
	5	6	8	10	12 15 20							
	6	8	10	12 15 20	16							
	8	12	15	16	20							
	10	16	18									
	4	6	8	10	12							16
	5	6	8	10	12 15 20							16
	6	8	10	12 15 20	16							
	8	12	15	16	20							

Ordering Example Part Number HFBCM5-10-SET1

M-L	Unit Price of Set of 500 pcs. (SET1)		
	HFBCM	SHFBS	HFBMB
3-6	-	-	-
8	-	-	-
10	-	-	-
12	-	-	-
4-6	-	-	-
8	-	-	-
10	-	-	-
12	-	-	-
5-6	-	-	-
8	-	-	-
10	-	-	-
12	-	-	-
15	-	-	-
20	-	-	-
35	-	-	-
40	-	-	-
45	-	-	-
6-8	-	-	-
10	-	-	-
12	-	-	-
15	-	-	-
30	-	-	-
35	-	-	-
8-12	-	-	-
15	-	-	-
16	-	-	-
20	-	-	-
10-16	-	-	-
18	-	-	-

## Phillips Truss Machine Screws

Type	Part Number					D	H	
	M	L						
HCBM SHCBM HCBMB	3	6				SET1	6.9	1.9
	4	5	8	10	12			
	5	8	10	12 15 30 35				
	6	10	12 15					

M-L	Unit Price of Set of 500 pcs. (SET1)		
	HCBM	SHCBM	HCBMB
3-6	-	-	-
4-5	-	-	-
8	-	-	-
10	-	-	-
12	-	-	-
5-8	-	-	-
10	-	-	-
12	-	-	-
15	-	-	-
30	-	-	-
35	-	-	-
6-10	-	-	-
12	-	-	-
15	-	-	-