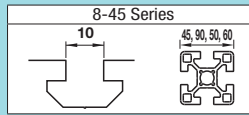


# Extrusion End Caps

## For 8-45 Series (Slot Width 10mm) Aluminum Extrusions

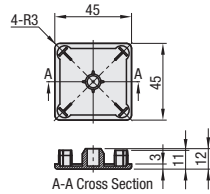


**Features:** Standard caps for protecting extrusion end faces. Alterations for Aluminum Extrusions not necessary.

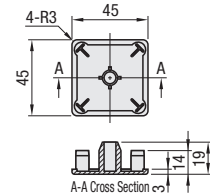
Type	Material
HFC	Polyamide
HFCL	Low Density Polyethylene

- Some products are not required to specify colors. In that case, color is black.
- The pin's shape and numbers of extrusion end caps may be changed to prevent caps from easily falling off.
- HFCL is not applicable to extrusions with Wrench Hole in Fixed Position (P.761), D Type Hole (P.764), or L Type Hole (P.767).

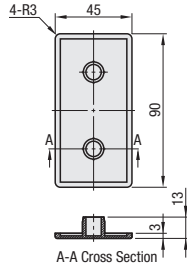
**HFC8-4545**



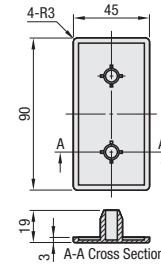
**HFCL8-4545**



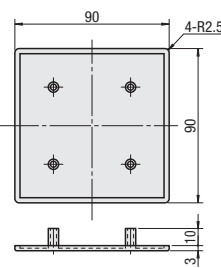
**HFC8-4590**



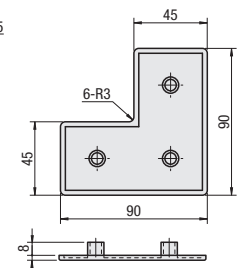
**HFCL8-4590**



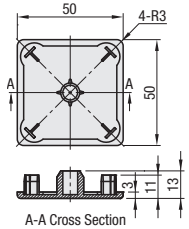
**HFC8-9090**



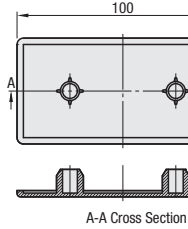
**HFC8-909045**



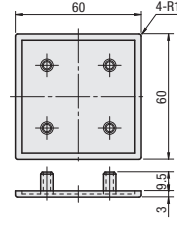
**HFC8-5050**



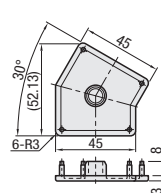
**HFC8-50100**



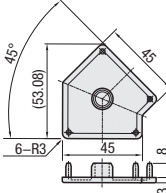
**HFC6-8-6060**



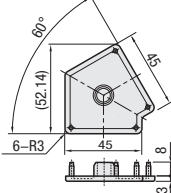
**HFC30A8-45**



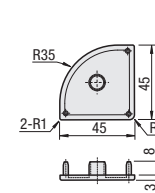
**HFC45A8-45**



**HFC60A8-45**



**HFCR8-4545**



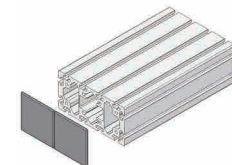
- HFC and HFCL can be used for each Aluminum Extrusion other than GFS/GNFS Series.
- For Aluminum Extrusions other than GFS Series, the same extrusion end caps as of HFS Series can be used. For caps for GFS Series, see P.734.

Part Number	Color	Unit Price	Volume Discount Rate	Applicable Extrusion
Type	No.	1 - 14 pc(s)	15 - 19	20 - 200
HFC8	4545			8-4545
	4590			8-4590
	9090			8-9090
	909045			8-909045
	5050			8-5050
HFCL8	4545			8-4545
	4590			8-4590
HFC30A8-45	30A8-45			30A8-45
	45A8-45			45A8-45
	60A8-45			60A8-45
	8-909045			8-909045
HFC8	5050			8-5050
	50100			8-50100
HFC6-8	6060			8-6060 (6-6060)

Part Number	Color
HFC30A8-45	B



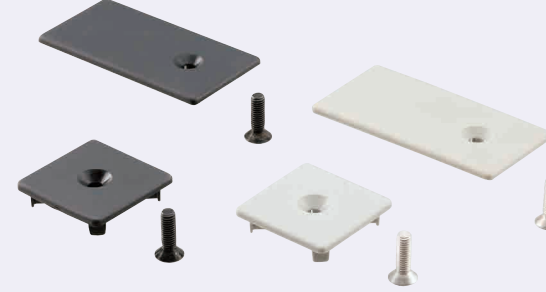
HFC30A8-45  
HFS30A8-45  
When using Aluminum Extrusion HFS8-90180, please use 2 pieces of HFC8-9090.



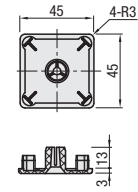
- HFC8-5050 cannot be used for 6-5050 extrusion.
- HFC6-8-6060 can be used for both 6-6060 and 8-6060.

**Features:** Extrusion End Caps Screw Mounting Type. Requires no alteration and excels in safety.

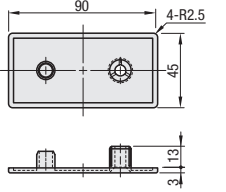
**Screw Mounted**



**HFCB8-4545**  
(Screw Fixing Type)



**HFCB8-4590**  
(Screw Fixing Type)



- The pin's shape and numbers of extrusion end caps may be changed to prevent caps from easily falling off.

Material: Polyamide (Black, Light Gray)

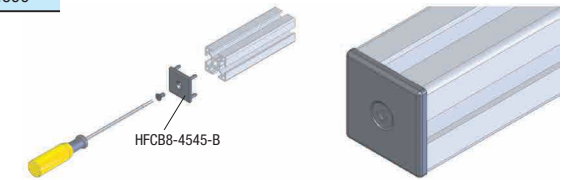
Part Number	Color	Unit Price	Volume Discount Rate	Applicable Extrusion *
Type	No.	1 - 14 pc(s)	15 - 19	20 - 500
HFCB8	4545	B (Black)		8-4545
	4590	S (Light Gray)		8-4590



Example

<Before Mounting>

<After Mounting>



- \* For Aluminum Extrusion EFS Series, the same extrusion end caps as of HFS Series can be used.
- Flat Head Screw is included for Screw Mounting Type. (Black: HFBMB6-20, Light Gray: SHFBS6-20)



Ordering Example  
Part Number - Color  
HFCB8-4545 - B

- Tapping on extrusion is not required.

**Features:** Extrusion End Caps only for High Rigidity Aluminum Extrusions. Alterations are required on the cross sections.

**Plates for High Rigidity Type**

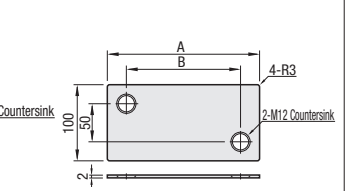
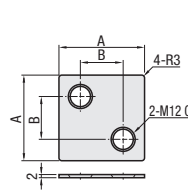
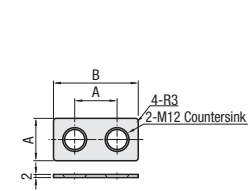
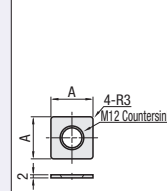
**HFCD8**

Shape AA

Shape BB

Shape AC

Shape AD



Material: SUS304

Part Number	Shape	A	B	Applicable Screw	Applicable Extrusion	Unit Price	Volume Discount Rate
Type	No.					1 ~ 9 pc(s)	10 ~ 50
HFCD8	4545	AA	45	-	GFS8-4545		
	4590	AB	45	90	GFS8-4590		
	5050	AA	50	-	GFS8-5050		
	50100	AB	50	100	GFS8-50100		
	6060	AA	60	-	GFS8-6060		
	9090	AC	90	45	GFS8-9090		
	100100	AC	100	50	GFS8-100100		
	100200	AD	200	150	GFS8-100200		



Ordering Example  
Part Number  
HFCD8-4545

- Special alteration is required on cross sections of extrusions to mount extrusion end caps. (P.768)