

Blind Joint Components

Pre-Assembly Insertion Double Joint Kits for 8-45 Series (Slot Width 10mm) Aluminum Extrusions

For details of fastening method, see P.611.
Alterations necessary to use this component

S Type Hole Alterations
P.765

Blind Joint Components

Post-Assembly Insertion Double Joint Kits for 8-45 Series (Slot Width 10mm) Aluminum Extrusions

For details of fastening method, see P.607.
Alterations necessary to use this component
M Type Hole Alterations
P.766

Features: Two screws are used for connection. Can be used to extend extrusions as well as mounting to plates. A joint type superior in mounting flexibility.

Pre-Assembly Insertion Double Joint Kits - Standard Type

HDJNSN HDJHSN (Offset Nut Type)

Pre-Assembly Insertion Double Joints HDJFSN (SUS316 Equivalent, Sintered)

Pre-Assembly Insertion Nuts HNTTSN (SUS316 Equivalent, Sintered) Electrically Conductive

HNTHSN (SUS316 Equivalent, Sintered) Electrically Conductive

Products shown in the picture come by ordering quantity 1. **RoHS10**

Part Number	Usable in any direction	Usable in the short length direction	Usable in the long length direction	Usable in the direction where there is no flat surface at the connecting part
4545	○	○		
4590	○	○		
NFSB	○	○		
HFSB	○	○		
GFSB	○	○		
EFBS	○	○		
50100	○	○		
6060	○	○		
9090	○	○		
90180	○	○		
4545	○	○		
4590	○	○		
HFSFB	○	○		
GFSFB	○	○		
EFSB	○	○		
5050	○	○		
NEFSFB	○	○		
6060	○	○		
4545	○	○		
HFSLB	○	○		
EFSLB	○	○		
4545	○	○		
4590	○	○		
HFSB	○	○		
EFBS	○	○		
5050	○	○		
50100	○	○		
9090	○	○		
90180	○	○		
HFSFB	○	○		
4545	○	○		

Pre-Assembly Insertion Double Joint Kit

Type	Part Number	① Pre-Assembly Insertion Double Joint (2 pcs.)	② Pre-Assembly Insertion Nut (2 pcs.)	③ Hex Socket Head Cap Screw (2 pcs.)	Unit Price	Volume Discount Rate
Standard Type	HDJNSN (SUS316 Equivalent, Sintered)	8-45	HDJFSN8-45	HNTTSN8-6	SCB6-35	1-99 pc(s), 100-120
Offset Nut Type	HDJHSN (SUS316 Equivalent, Sintered)	8-45	HDJFSN8-45	HNTHSN8	SCB6-35	

Pre-Assembly Insertion Double Joint Single Item

Part Number	Unit Price	Volume Discount Rate
HDJFSN (One set contains 2 pcs.)	1-99 pc(s)	100-120

One set is required to connect one place.

Example

Example of Extrusion Connection

Example of Mounting to an Extrusion from the Bottom

Not applicable to extrusions not listed above.

Nuts for Pre-Assembly Insertion Double Joints Joint Nut

HDJRN

Material: SUS304

Part Number	Applicable	Mass (g)	Unit Price	Volume Discount Rate		
HDJRN	8-45	HFSB-4545	HDJFSN8-45	CBM6-50	56	1-99 pc(s), 100-120

Ordering Example

Part Number: HDJNSN8-45, HDJRN8

Features: Pre-Assembly Insertion Double Joint installable without alterations. (No holes are required on the mating extrusion.)

Aluminum Extrusion with Built-in Pre-Assembly Insertion Double Joints

JFSD8-4545L (Left End Face Pre-Assembly Insertion Double Joint Built-in Type)

JFSD8-4545W (Both End Face Pre-Assembly Insertion Double Joints Built-in Type)

Joint components will be shipped loosely tightened.

Example

Tighten with a hex wrench while adjusting the position.

Part Number	Joint Component	L (mm)	Extrusion	Built-in Joint Component	Required Wrench	Extrusion Unit Price	Joints, Others
JFSD	8-4545	100-4000	HFSB-4545 (P.681)	HDJNSN8-45	For M6	Less than 300mm/300mm or more (JPY/m)	

When L<300mm
Unit prices are indicated in the table regardless of the length.
When L≥300mm
Prices are calculated as follows:
Unit Price/m x Specified L dimension + Joint or other
Unit Price = Total Price

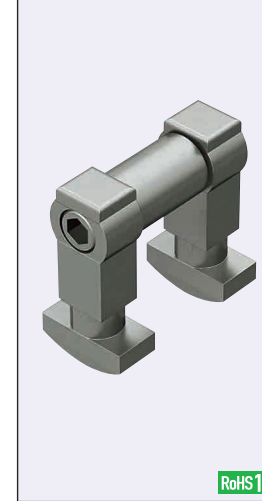
Ordering Example Part Number - L
JFSD8-4545L - 1200

Alterations
Alterations only on this page are available.

Alterations	Code	Spec.		
		Extrusion	Tap	Depth
Right End Face Tapping Applicable to Left End Pre-Inserted Type only.	RTP Right End Face Tapping	8-4545	M12 (Hell-Coil Insert)	18

Alterations	Code	Spec.		
		Extrusion	H	Hole Dia.
Right End Face Wrench Hole Applicable to Left End Pre-Inserted Type only.	RCH RCV	8-4545	22.5	8

Post Assembly Insertion Double Joint Kits



HPJN (Post-Assembly Insertion Double Joint)

① Post-Assembly Insertion Double Joint A

② Post-Assembly Insertion Double Joint B

③ Joint Pipe

Part Name	Material
Post-Assembly Insertion Double Joint (A, B)	SCS13
Joint Pipe	SUS304 (Sintered)
Hex Socket Head Cap Screw	SUS304

Part Number	Accessory	Unit Price	Volume Discount Rate
HPJN	① Post-Assembly Insertion Double Joint A Quantity 1, ② Post-Assembly Insertion Double Joint B Quantity 1, ③ Joint Pipe Quantity 1, ④ Hex Socket Head Cap Screw Quantity 1	1-19 pc(s), 20-200	

③ Joint Pipe

Part Name	L	D	d
Joint Pipe 8-45	19	13	8
Joint Pipe 8-90	64		
Joint Pipe 8-50	24		
Joint Pipe 8-60	34	7	4.7
Joint Pipe 8-100	74		

Post-Assembly Insertion Double Joint Kit	Applicable Extrusion No.	[Exception] Extrusion Not Available
HPJN8-45	8-4545*	* HFSB-4545, HFSLB-4545 and HFSFB-4545 cannot be used because the thickness of slot extrusion is different.
HPJN8-90	8-4590* 8-9090	
HPJN8-50	8-5050 8-50100	* HFSLB-4590 cannot be used because the thickness of slot extrusion is different.
HPJN8-60	8-6060	
HPJN8-100	8-100100 8-50100 8-100200	

Not usable for surfaces without slots.

Ordering Example Part Number: HPJN8-45

Installation Example

HPJN8-45

HFSB-4545-1000-LMH Length (Optional)

M Hole Alterations

HFSB-4545-1000 Length (Optional)

App. Example of Rectangle Shape Extrusion

Pre-Assembly Insertion Double Joint Connection (Connect the extrusion at the corners or the center.)

1. Pre-insert the joint tube (C) into the M hole of extrusion (1).

2. Insert the Post-Assembly Double Joints (A) and (B) sideways into the slot of extrusion (2).

3. Rotate the joints (A) and (B) 90° in the direction as shown in the left figure.

4. Fit the joints (A) and (B) in the slot of the extrusion.

5. Insert the hex socket head cap screw into a counterbore hole of the joint (A).

6. Tighten the hex socket head cap screw with a hex wrench; the extrusion (1) and (2) are lifted upward, then 2 extrusions joint together.