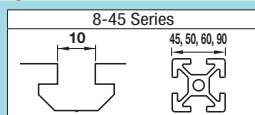


Extruded Brackets - For 1 Slot

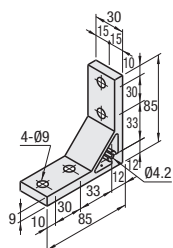
For 8-45 Series (Slot Width 10mm) Aluminum Extrusions



■ **Features:** Extruded Brackets with two mounting holes on one side can connect extrusions more securely.

■ **Thick Brackets**

HBLTSW8



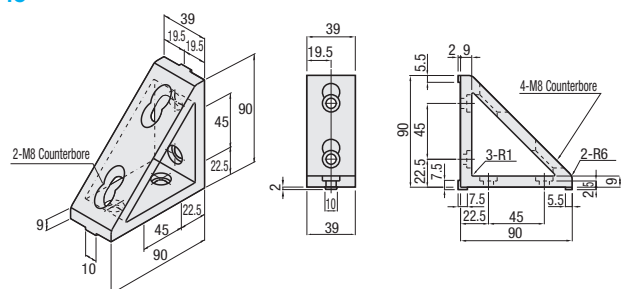
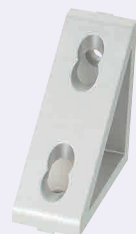
RoHS10 **M** Material: A6N01SS-T5 **S** Surface Treatment: Anodize

Part Number	Mass (g)	Applicable Screw		T Nut		Allowable Load (N)	Unit Price (1-99 pc(s))	Volume Discount Rate (100-200)
		Quantity	Quantity	Quantity	Quantity			
HBLTSW8	113	CBM8-20	4	HNTT8-8	4	3087		

■ **Features:** Extruded Brackets with two mounting holes on one side can connect extrusions more securely.

■ **Triangle Brackets**

HBLDSWT8-45



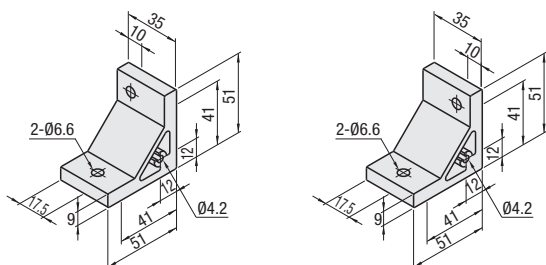
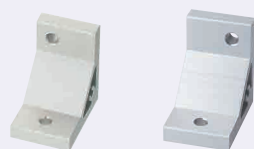
RoHS10 **M** Material: A6N01SS-T **S** Surface Treatment: Anodize

Part Number	Mass (g)	Applicable Screw		T Nut		Allowable Load (N)	Unit Price (1-99 pc(s))	Volume Discount Rate (100-200)
		Quantity	Quantity	Quantity	Quantity			
HBLDSWT8-45	235	CBM8-15	4	HNTT8-8	4	3087		

■ **Features:** Brackets to connect 45, 30 square Extrusions.

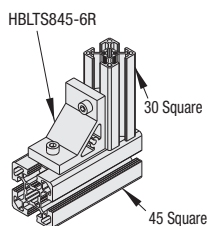
■ **Assembly Brackets for Different Extrusion Sizes**

HBLTS845-6L HBLTS845-6R



M Material: A6N01SS-T5 **S** Surface Treatment: Anodize

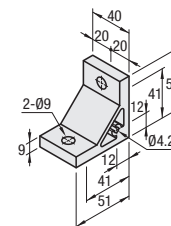
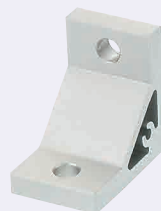
ex Example



Part Number	Mass (g)	Applicable Screw		T Nut		Allowable Load (N)	Unit Price (1-99 pc(s))	Volume Discount Rate (100-200)
		Quantity	Quantity	Quantity	Quantity			
HBLTS845-6L	78	CBM6-20	1	HNTT8-6	1	-		
CBM6-15		HNTT6-6						
CBM6-20		HNTT8-6						
CBM6-15		HNTT6-6						

■ **Features:** Extruded Brackets to connect 50 square Extrusions.

For 50 Sq. HBLTS8-50

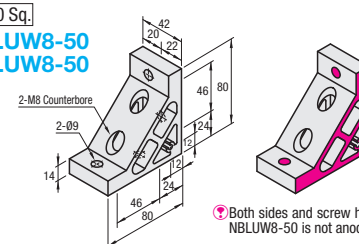
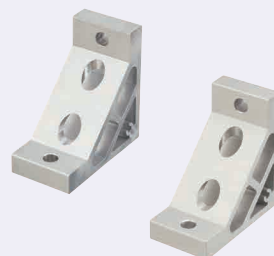


M Material: A6N01SS-T5 **S** Surface Treatment: Anodize

Part Number	Mass (g)	Applicable Screw		T Nut		Allowable Load (N)	Unit Price (1-99 pc(s))	Volume Discount Rate (100-200)
		Quantity	Quantity	Quantity	Quantity			
HBLTS8-50	89	CBM8-20	2	HNTT8-8	2	2058		

■ **Features:** Extruded Brackets for 50 square Extrusions with two mounting holes on one side.

For 50 Sq. NBLUW8-50 HBLUW8-50



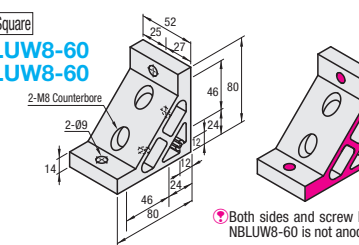
⚠ Both sides and screw holes of NBLUW8-50 is not anodized.

Type	M Material	S Surface Treatment
NBLUW8-50	A6063S-T5	Anodize
HBLUW8-50	A6N01SS-T5	Anodize

Part Number	Mass (g)	Extrusion Series	Applicable Screw		T Nut		Allowable Load (N)	Unit Price (1-99 pc(s))	Volume Discount Rate (100-200)
			Quantity	Quantity	Quantity	Quantity			
NBLUW8-50	223	HFS8-5050	CBM8-15	2	HNTT8-8	4	2793		
CBM8-25									
HBLUW8-50			CBM8-15						
			CBM8-25						

■ **Features:** Extruded Brackets to connect 60 square Extrusions.

For 60 Square NBLUW8-60 HBLUW8-60



⚠ Both sides and screw holes of NBLUW8-60 is not anodized.

Type	M Material	S Surface Treatment
NBLUW8-60	A6063S-T5	Anodize
HBLUW8-60	A6N01SS-T5	Anodize

Part Number	Mass (g)	Extrusion Series	Applicable Screw		T Nut		Allowable Load (N)	Unit Price (1-99 pc(s))	Volume Discount Rate (100-200)
			Quantity	Quantity	Quantity	Quantity			
NBLUW8-60	275	HFS8-6060	CBM8-15	2	HNTT8-8	4	2793		
CBM8-25									
HBLUW8-60			CBM8-15						
			CBM8-25						

Ordering Example **Part Number**
HBLTS845-6L
HBLUW8-50

Alterations **Part Number** - (C, SET, SST, SEU, SSU, SEP, SSP, SEC)
HBLTS845-6L - SET

Alterations	Code	Spec.	Applicable Bracket
Mounting Hole Alteration for Cover	C	Adds taps on a bracket for cover mounting. (M5 on Both Sides) (Mounting Screw HCBM on P.754) *Tapping Direction: For HBLTS845-6□, tapping is only applied on the narrow side of the offset.	HBLTSW8
		HBLTS845-6L*	
		HBLTS845-6R*	
		HBLTS8-50	
		HBLUW8-50	
			HBLUW8-60

Alterations	Code	Spec.	Applicable Bracket
Applicable Screws and Nuts Set	SET SST (Stainless Steel)	Applicable screws and nuts for fixing the brackets on extrusions come in a set. (Adds to the bracket price)	HBLTSW8
	SEU (Pre-Assembly Insertion Spring Nuts)	(Ex.) When HBLTSW8 is specified:	HBLTS845-6L
	SSU (Pre-Assembly Insertion Spring Nuts)	Code Screw Nut	HBLTS845-6R
	SEP (Pre-Assembly Insertion Spring Nuts)	SET CBM8-20 HNTT8-8	HBLTS8-50
	SSP (Pre-Assembly Insertion Spring Nuts)	SST SCB8-20 HNTT8-8	NBLUW8-50
	SEC (Screws with Captured Washer and Nuts)	SEU CBM8-20 HNTU8-8	HBLUW8-50
		SSU SCB8-20 SHNTU8-8	HBLUW8-50
		SEP CBM8-20 HNTP8-8	HBLUW8-50
		SSP SCB8-20 SHNTP8-8	NBLUW8-60
		SEC HCBST8-24 HNTT8-8	HBLUW8-60

⚠ Included Screw is not RoHS compliant when -SET, -SEU or -SEP are specified.