

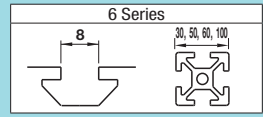
Nuts for Aluminum Extrusions - Overview

For 6 Series (Slot Width 8mm)

Note that, for some of the types shown here, order might be unable to be received by the MISUMI Malaysia, Indonesia and/or India offices.

Nuts for Aluminum Extrusions - Bulk Packages

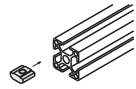
For 6 Series (Slot Width 8mm)



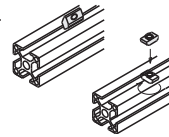
Nuts for Aluminum Extrusions - Overview

MISUMI offers variety of Pre-Assembly or Post-Assembly Insertion Nuts for Aluminum Extrusions. Select an applicable type specific to your application.

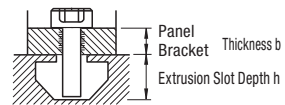
Pre-Assembly Insertion: Insert from the slot ends before assembly. Large width causes less plays in the slots, making screw tightening easy.



Post-Assembly: Mountable from slots after assembly.



Type	Photo	Features	Pre-Assembly				Post-Assembly			
			Material		Page		Material		Page	
			Steel	Stainless Steel	Single Item	Package	Steel	Stainless Steel	Single Item	Package
Standard		Most standard and economical products. Can be connected temporarily in combination with optional stoppers.	○	○	P619	P618	○	○	P622	P618
Temporary Holding (Ball Spring)		Can be moved in the extrusions smoothly. Temporary holding is repeatedly possible.	○	○	P620	P618	○	○	P623	P618
Temporary Holding (Leaf Spring)		Secure temporary holding with springs on both sides.	-	-	-	-	○	○	P623	P624
Temporary Holding (Resin Stopper)		Resin stopper on outer circumference prevents aluminum extrusions from being scratched when mounting temporarily.	○	○	P620	-	-	-	-	-
Post-Assembly Rotational		Insert the nut into the extrusion and turn it in the slot. Large nut width prevents plays.	-	-	-	-	○	○	P622	-
With Lock		Included set screw enables nut fixing. Convenient where panes and covers are removed frequently.	○	-	P621	-	○	○	P624	-
Thread Locking Adhesive Type		Reduces loosening due to vibrations caused by transfer or equipment moves. One-time use and repeated use types are available.	○	-	P619-620	-	○	-	P622-624	-
Compact (Short Nuts)		Usable with narrow pitch when multiple nuts are lined in the slots. (Approx. 40% shorter than the standard width)	○	-	P621	P621	○	-	P624	P624
Square Nuts		Sheet metal type: more economical than standard nuts.	○	○	-	P621	-	-	-	-
Screw Integrated		Requires less time for screw tightening.	-	○	P625	-	-	○	P625	-
Long Nut		Workpieces such as Linear Guides are mountable with desired pitches.	○	○	P626	-	○	○	P626	-
Offset Nut (Other than 5 Series)		When connecting the extrusions at corners with Pre-Assembly Insertion Double Joint (refer to P611), the nut does not protrude from the extrusion.	-	○	P621	-	-	-	-	-
Conductive Washers (Other than 5 Series)		Electrical conductivity between extrusions is achieved by combining with Toothed Washer (P625).	-	○	P625	-	-	-	-	-



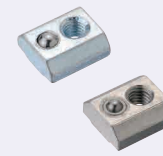
Aluminum Extrusions and Applicable Screws to Mount Panes/Brackets (Size M - L Dim.)

Slot Width	Extrusion Square	Depth h	Applicable Nut HNTT	Panels/Brackets Thickness b (mm) to be mounted on extrusions															
				0.8	1	1.2	1.5	2	3	4	4.5	5	6	8.2	9	10	12	14	
8	30	9	6-3	M3-8	M3-10	M3-12	M3-15	M3-18	M3-20										
			6-4	M4-8	M4-10	M4-12	M4-15	M4-18	M4-20										
			6-5	M5-8	M5-10	M5-12	M5-15	M5-18	M5-20	M5-22									
			6-6	x	M6-10	M6-12	M6-15	M6-20	M6-22										

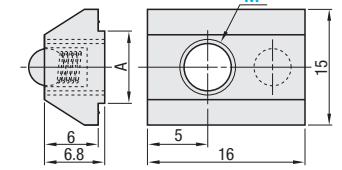
⊙ "x" means there is no applicable screw. Use one size smaller tapped products.

Features: Bulk packages are cost effective for in-house stock or large quantity uses.

Pre-Assembly Insertion Spring Nuts - Pack (100/Pkg.)



Type	Main Body	Ball	Spring	Material	Surface Treatment
PACK-HNTU	S10C Equivalent	SUS304	SWP-A	SUS304	Trivalent Chromate
PACK-SHNTU	SUS304 Equivalent (Sintered)	SUS304	SUS304-WP8	SUS304	-



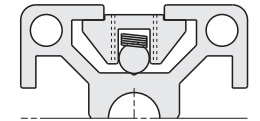
Part Number		M						Unit Price (1 ~ 10 packages)	
Type	No.	3	4	5	6	Package Price	Price per Pkg.		
PACK-HNTU	6								
PACK-SHNTU	6								

100 pcs. per package

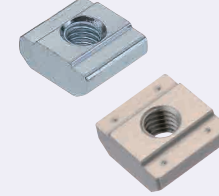


Example

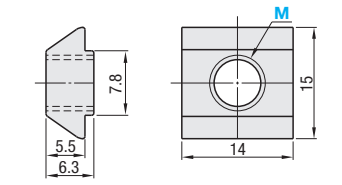
Does not fall even if the extrusion is placed vertically. Built-in spring prevents slips. Moves easily in the slot when pressed slightly by hand.



Pre-Assembly Insertion Spring Nuts - Pack (100/Pkg.)



Type	Material	Surface Treatment
PACK-HNTT	S10C Equivalent	Trivalent Chromate
PACK-HNTTSN	SUS316 Equivalent (Sintered)	-

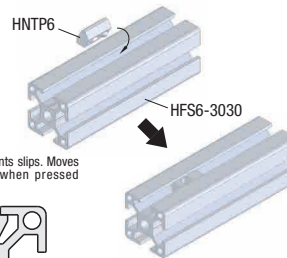


Part Number		M						Unit Price (1 ~ 10 packages)	
Type	No.	3	4	5	6	Package Price	Price per Pkg.		
PACK-HNTT	6								
PACK-HNTTSN	6								

100 pcs. per package



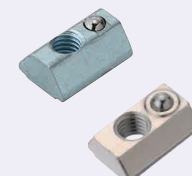
Example



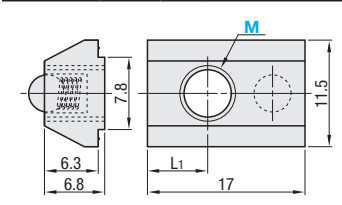
Built-in spring prevents slips. Moves easily in the slot when pressed slightly by hand.

*Does not fall even if the extrusion is placed vertically.

Post-Assembly Insertion Spring Nuts - Pack (100/Pkg.)



Type	Main Body	Ball	Spring	Material	Surface Treatment
PACK-HNTA	S10C Equivalent	SUS304	SWP-A	SUS304	Trivalent Chromate
PACK-SHNTA	SUS304 Equivalent (Sintered)	SUS304	SUS304-WP8	SUS304	-

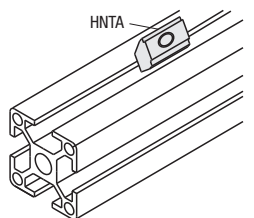


Part Number		M						Unit Price (1 ~ 10 packages)	
Type	No.	3	4	5	6	Package Price	Price per Pkg.		
PACK-HNTA	6								
PACK-SHNTA	6								

100 pcs. per package



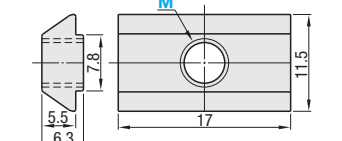
Example



Post-Assembly Insertion Stopper Nuts / Pack (100/Pkg.)



Type	Material	Surface Treatment
PACK-HNTA	S10C Equivalent	Trivalent Chromate
PACK-HNTASN	SUS316 Equivalent (Sintered)	-



Part Number		M						Unit Price (1 ~ 10 packages)	
Type	No.	3	4	5	6	Package Price	Price per Pkg.		
PACK-HNTA	6								
PACK-HNTASN	6								

100 pcs. per package



Ordering Example
Part Number - M
PACK-HNTA6 - 6