

# Blind Joint Components

## Parallel Joint Kits for 6 Series (Slot Width 8mm) Aluminum Extrusions

Alterations necessary to use this component

L Type Hole Alterations  
P.767

■ **Features:** Extrusions can be connected in parallel. Post assembly additions enabling type is also provided.

### Parallel Joint Kits Pre-Assembly Insertion Type



### Parallel Joints Post-Assembly Insertion Type



(Ref.) Corner section when using this joint



RoHS10

Part Name	Material	Surface Treatment
Pre-Assembly Insertion Parallel Post	SCS13	-
Post-Assembly Insertion Parallel Post	SUS304	-
Joint Guide	SUS304	-
Set Screw	SCM435	Black Oxide Film

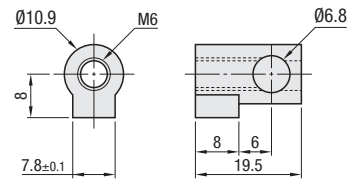
### HLJ

(Parallel Joint Kits Pre-Assembly Insertion Type)

### HALJ

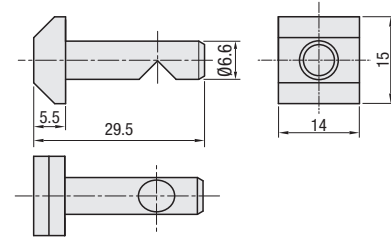
(Parallel Joint Kits Post-Assembly Insertion Type)

### Joint Guide

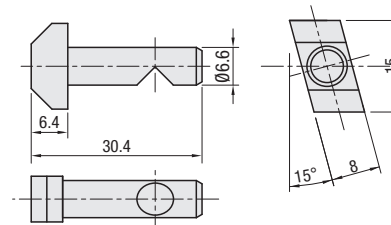


### Parallel Joints

#### Pre-Assembly Insertion Parallel Post



#### Post-Assembly Insertion Parallel Post



Part Number Type	No.	Accessory				Unit Price 1-99 pc(s)	Volume Discount Rate 100~120	
		① Parallel Post	Quantity	③ Joint Guide	Quantity			④ Set Screw
HLJ Pre-Assembly Insertion Type	6	Pre-Assembly Insertion Parallel Post 6	1	Joint Guide 6	1	M6x12	1	
HALJ Post-Assembly Insertion Type	6	Post-Assembly Insertion Parallel Post 6	1	Joint Guide 6	1	M6x12	1	

### Extrusions Applicable to This Joint

Applicable Extrusion No.	[Exception] Extrusion Not Available
6-3030*1 6-3060*1 6-3090 6-30120	
6-5050 6-50100	*1 HFSH and HFSC are not applicable since L type holes cannot be added.
6-6060 6-6090	



Ordering  
Example

Part Number  
HLJ6



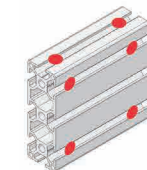
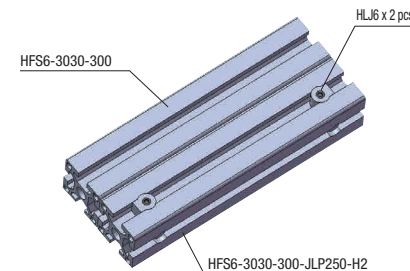
Example

### Parallel Joint Connection Method

Step	Front View / Side View	Parallel Joints	Description
1			Mount a parallel post to the extrusion (A). (Post-Assembly Insertion Type can be inserted by turning from upside of the slot.) ⚠ Parallel Post is for Standard Type and With Rotation Stopper Type.
2			Insert a Joint Guide into the extrusion (B) with L type Holes (P.767). Aligning of the holes is not required.
3			Move the extrusion (A) close to the extrusion (B) while putting the parallel post through the hole of joint guide.
4			Tighten the set screw to the side of joint guide.
5			When the set screw is tightened against the V groove on the post, the extrusions (A) and (B) will pull together and be bound.

• Part Numbers for the parts shown on the above example

• Connecting extrusions with 2 or more slots on one side  
Insert joint guide from the both ends of L type hole, then connect with two or more parallel joints.  
• Connecting extrusions with 3 or more slots  
L type holes are added on the outside rows only. Not applicable on rows in the middle.



• As long as interference between each joint does not occur, multiple extrusions can be connected.  
Use multiple connections when strength is required.

