

# Blind Joint Components

## Center Joint Kits for 6 Series (Slot Width 8mm) Aluminum Extrusions

Alterations necessary to use this component

M Type Hole Alterations  
P.766

■ **Features:** Requires only one screw for tightening. Work efficiency enhancing anti-rotation type is added.

### Center Joint Kits Pre-Assembly Insertion Type

(Standard Direction) (90-Degree Rotated)

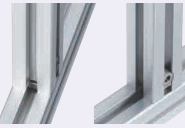


### Center Joint Kits

Post-Assembly Insertion Type With Rotation Stopper



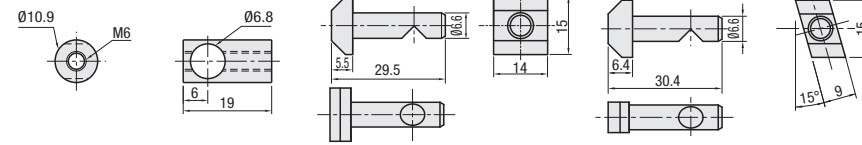
(Ref.) Corner section when using this joint



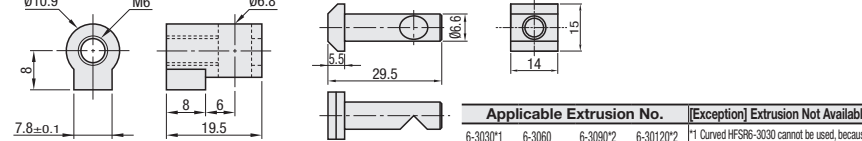
RoHS10

Type	Components (1 pc. each)					
	Joint Guide		Center Post		Set Screw	
	Type	Material	Type	Material	Size	Material
HMJ	Standard	SUS304	Pre-Assembly Insertion Standard Direction	SCS13	No.6: M6x12	SCM435 (Surface Treatment: Black Oxide Film)
HMJR			Pre-Assembly Insertion 90-Degree Rotated			
HAMJ			Post-Assembly Insertion Standard Direction			
HZJ	With Rotation Stopper	SUS304	Pre-Assembly Insertion Standard Direction			
HAZJ			Post-Assembly Insertion Standard Direction			

■ Joint-Guide (Standard) ■ Pre-Assembly Insertion Center Post Standard Direction ■ Post-Assembly Insertion Center Post



■ Joint-Guide (with Rotation Stopper) ■ Pre-Assembly Insertion Center Post 90-Degree Reversal Type  
(Tightening direction is reversed 90-degree, as shown in the app. example in the lower left-hand corner on P.606.)



Applicable Extrusion No.	[Exception] Extrusion Not Available
6-3030*1 6-3060 6-3090*2 6-30120*2	1 Curved HFS6-3030 cannot be used, because Wrench Hole Machining is not allowed.
6-5050 6-50100*2	2 Cannot be used in the long side direction because standard hole machining is not allowed.
6-6060 6-6090	

Type	No.	Center Post	Accessory				HMJ HMJR HAMJ		HZJ HAZJ		
			Quantity	Joint Guide	Quantity	Set Screw	Quantity	Unit Price	Volume Discount Rate	Unit Price	Volume Discount Rate
HMJ HZJ <small>Pre-Assembly Insertion Standard Direction Type</small>	6	Pre-Assembly Insertion Center Post 6	1	Joint Guide 6	1	M6x12	1	1~99 pc(s).	100~120	1~99 pc(s).	100~120
HMJR <small>Pre-Assembly Insertion 90-Degree Reversal Type</small>	6	Pre-Assembly Insertion Center Post 6 Rotated	1	Joint Guide 6	1	M6x12	1	-	-	-	-
HAMJ HAZJ <small>Post-Assembly Insertion Type</small>	6	Post-Assembly Insertion Center Post 6	1	Joint Guide 6	1	M6x12	1	-	-	-	-

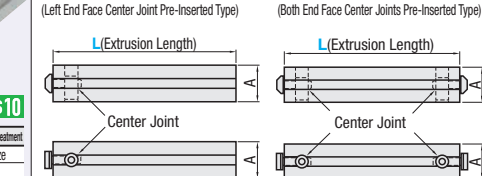
Ordering Example  
Part Number: HMJ6

■ **Features:** Center joint installable without alterations. (No holes are required on the mating extrusion.)

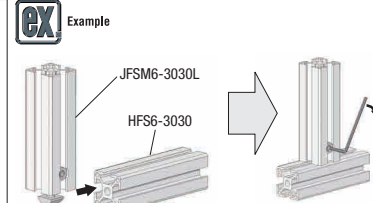
### Aluminum Extrusions with Built-in Center Joints

JFSM6-3030L (Left End Face Center Joint Pre-Inserted Type)

JFSM6-3030W (Both End Face Center Joints Pre-Inserted Type)



Joint components will be shipped loosely tightened.



Part Name	Material	Surface Treatment
Aluminum Extrusion	A6N01SS-T5	Anodize
Center Post	SCS13	-
Joint Guide	SUS304	-
Set Screw	SCM435	Black Oxide Film

Part Number	Joint Component	L 0.5mm Increment	Extrusion	Built-in Joint Component Center Joint	Quantity	A	Required Wrench for Tightening	Extrusion Unit Price Less than 300mm/ 300mm or more	Joints, Others
JFSM	6-3030	100~4000	HFS6-3030 (P571)	HMJ6	1 2	30	For M6		

Ordering Example  
Part Number: JFSM6-3030W - L 1200

Alterations  
Alterations only on this page are available.

Alterations	Code	Spec.			Alterations	Code	Spec.		
		Extrusion	Tap	Depth			Extrusion	H	Hole Dia.
Right End Face Tapping JFS is only applicable to Left End Face Joint Pre-Inserted Type.	RTP Right End Face Tapping	6-3030	M8	24	Right End Face Wrench Hole	RCH RCV	6-3030	15	8

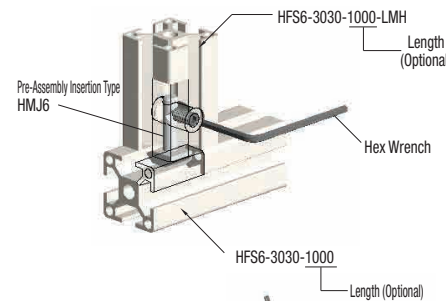


### Example Center Joint Connection Method

Step	Front View / Side View	Standard Type	With Rotation Stopper	Description
1				Mount a center post to extrusion (A). (Post-Assembly Insertion Type can be inserted by turning from upside of the slot.) Center Post is for Standard Type and With Rotation Stopper Type.
2				Insert a joint guide in the extrusion (B) with M type hole (P.766). For standard type, adjust the through hole to be upward.
3				Move the extrusion (A) close to the extrusion (B) while putting the center post through the through hole of joint guide.
4				Tighten the set screw to the side of joint guide.
5				When the set screw is tightened against a V groove on the center post, extrusion (A) and (B) are pulled and bound together.

Product Number for the parts shown on the above example (Standard Type).

- Connecting extrusions with 2 or more slots on one side  
Insert joint guide from the both sides of M type hole, and connect and tighten it with two or more center joints.
- For extrusions with three slots, holes are not provided on the center slot.  
(For extrusions with four rows of slots, all slots are drilled.)



Pre-Assembly Insertion Type HMJ6  
Hex Wrench  
HFS6-3030-1000  
Length (Optional)



2-slotted extrusions can be connected by using two Center Joint kits.  
3-slotted extrusions are connected using two outside slots only.

Pre-Assembly Insertion 90-Degree Rotated Type HMJR  
Can reverse tightening direction by 90 degrees.