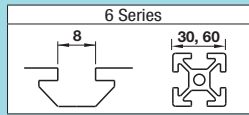


Tabbed Brackets - For 1 Slot

For 6 Series (Slot Width 8mm) Aluminum Extrusions

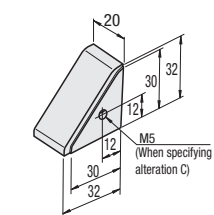


■ **Features:** Tabbed Reversal Brackets with Cover. Designed to prevent dust build-up.

Brackets with Cover

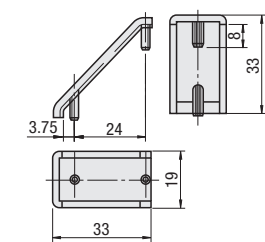


HBLFSNT6

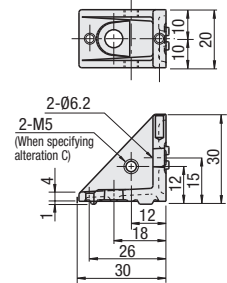


Material Cover: Polyamide (Black)
Bracket: ADC12

Cover



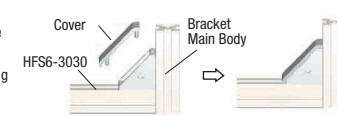
Brackets



Part Number	Mass (g)	Applicable Screw	T Nut	Quantity	Accessory Component	Part ①	Part ②	Quantity	Allowable Load (N)	Unit Price	Volume Discount Rate
HBLFSNT6	17	CBM6-12	HNTT6-6	2	Bracket	1	Cover	1	1176		100-200



Example
Example of Mounting Covers to Brackets



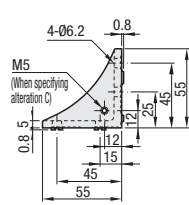
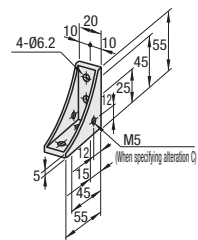
■ **Features:** Tabbed Reversal Brackets with two mounting holes on one side can connect extrusions more securely.

Tabbed Reversal Brackets



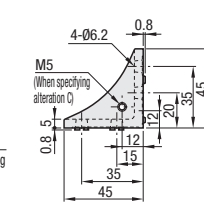
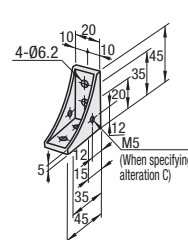
HBLFSSW6

HBLFSSWB6 (Black Anodize)



For 50 Sq.

HBLFSSW6-50



Type	Material	Surface Treatment
HBLFSSW6		
HBLFSSWB6	ADC12	Black Anodize
HBLFSSW6-50		

Part Number	Mass (g)	Applicable Screw	T Nut	Quantity	Allowable Load (N)	Unit Price	Volume Discount Rate
HBLFSSW6	37	CBM6-12	HNTT6-6	4	1764		100-200
HBLFSSWB6* (Black Anodize)							
HBLFSSW6-50	27						

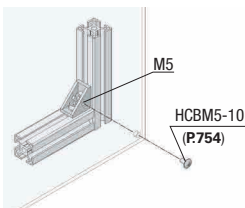
* For repairing black anodizing, refer to P846.

Ordering Example
Part Number
HBLFSNT6
HBLFSSW6

Alterations
Part Number - (C, SET, SST, SEU, SSU, SEP, SSP, SEC)
HBLFSSW6 - SET

Alterations	Code	Spec.	Applicable Bracket
Mounting Hole Alteration for Cover	C	Adds taps on a bracket for cover mounting. (M5 on Both Sides) (Mounting Screw HCBM on P754)	HBLFSNT6
			HBLFSSW6
			HBLFSSWB6
			HBLFSSW6-50

■ **C Hole Alterations**
(Example of Cover Mounting)
*Specify alteration code C.

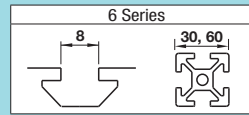


Alterations	Code	Spec.	Applicable Bracket
Applicable Screws and Nuts Set	SET SST (Stainless Steel) SEU (Pre-Assembly Insertion Spring Nuts) SSU (Pre-Assembly Insertion Spring Nuts Stainless Steel) SEP (Post-Assembly Insertion Spring Nuts) SSP (Post-Assembly Insertion Spring Nuts Stainless Steel) SEC (Screws with Captured Washer and Nuts)	Applicable screws and nuts for fixing the brackets on extrusions come in a set. (Adds to the bracket price.)	HBLFSNT6
		(Ex.) When HBLFSSW6 is specified:	HBLFSSW6
		Code Screw Nut	HBLFSSWB6
		SET CBM6-12 HNTT6-6	HBLFSSWB6
		SST SCB6-12 HNTT6-6	
		SEU CBM6-12 HNTU6-6	
		SSU SCB6-12 SHNTU6-6	
		SEP CBM6-12 HNTTP6-6	
		SSP SCB6-12 SHNTTP6-6	
		SEC HCBST6-15 HNTT6-6	HBLFSSW6-50
*When specifying other than HBLFSSW6, check for the applicable screws and nuts.			

① Screws for black anodized brackets are HCBMTB (Trivalent Chromate Black) on P751.
② Included Screw is not RoHS compliant when -SET, -SEU or -SEP other than black anodized brackets is specified.

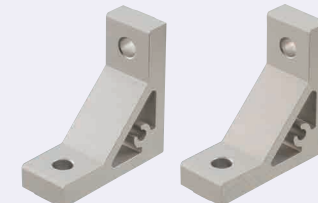
Extruded Brackets - For 1 Slot

For 6 Series (Slot Width 8mm) Aluminum Extrusions



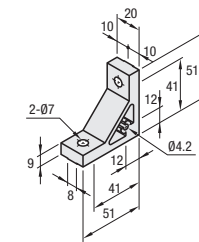
■ **Features:** Perpendicularly Machined Type Extruded Brackets with tabs to fit extrusions. Brackets with tabs to fit in slots of extrusions and stop rotating when tightening.

Thick Brackets (Perpendicularly Machined)

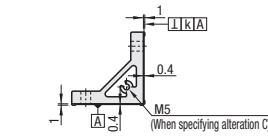


HBKTS6 HBLTS6

Part Number	Perpendicularity K
HBKTS6	0.03
HBLTS6	0.06



Perpendicularly Machined Type has protrusions on the bracket bottom to be inserted into aluminum extrusion slots.



Type	Material	Surface Treatment
HBKTS6	AGN01SS-T5	Anodize
HBLTS6		

Part Number	Mass (g)	Applicable Screw	T Nut	Quantity	Allowable Load (N)	Unit Price	Volume Discount Rate
HBKTS6	44	CBM6-15	HNTT6-6	2	1176		100-200
HBLTS6							

■ **Features:** Aluminum Extruded Brackets. Designed to prevent dust from building up with good appearance.

Thick Brackets



NBLTS6 HBLTS6-5

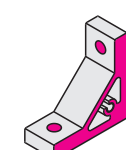
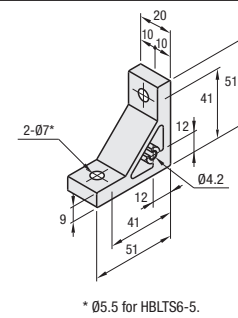
(For M5 Screw)

HBLTSB6

(Black Anodize)

CHBLTS6

(Clear Coating)



① Both sides and screw holes of NBLTS6 is not anodized.

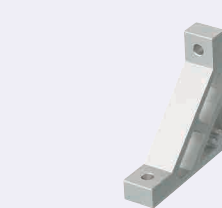
Type	Material	Surface Treatment
NBLTS6	AG063S-T5	Anodize
HBLTS6(-5)		Black Anodize
HBLTSB6		Clear Coating
CHBLTS6	AGN01SS-T5	Anodize
		Clear Paint

Part Number	Mass (g)	Applicable Screw	T Nut	Quantity	Allowable Load (N)	Unit Price	Volume Discount Rate
NBLTS6	44	CBM6-15	HNTT6-6	2	1176		100-200
HBLTS6							
HBLTS6-5 (For M5 Screw)		CBM5-15	HNTT6-5				
HBLTSB6* (Black Anodize)		CBM6-15	HNTT6-6				
CHBLTS6 (Clear Coating)							

* For repairing black anodizing, refer to P846.

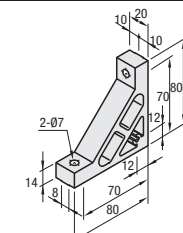
■ **Features:** Numbers of screws are the same as HBKTS6. Extrusions can be connected more securely. Perpendicularly Machined.

Ultra Thick Brackets (Perpendicularly Machined)

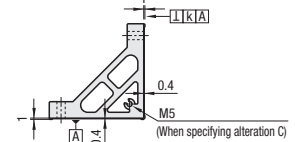


HBKUS6

Perpendicularity K: 0.06



Perpendicularly Machined Type has protrusions on the bracket bottom to be inserted into aluminum extrusion slots.



Material: A6N01SS-T5
Surface Treatment: Anodize

Part Number	Mass (g)	Applicable Screw	T Nut	Quantity	Allowable Load (N)	Unit Price	Volume Discount Rate
HBKUS6	101	CBM6-20	HNTT6-6	2	1176		100-200

Ordering Example
Part Number
HBLTS6

Alterations
Part Number - (C, SET, SST, SEU, SSU, SEP, SSP, SEC)
HBLTS6 - SET

Alterations	Code	Spec.	Applicable Bracket
Mounting Hole Alteration for Cover	C	Adds taps on a bracket for cover mounting. (M5 on Both Sides) (Mounting Screw HCBM on P754)	HBKTS6
			NBLTS6
			HBLTS6
			HBLTS6-5
			CHBLTS6
			HBKUS6

Alterations	Code	Spec.	Applicable Bracket
Applicable Screws and Nuts Set	SET SST (Stainless Steel) SEU (Pre-Assembly Insertion Spring Nuts) SSU (Pre-Assembly Insertion Spring Nuts Stainless Steel) SEP (Post-Assembly Insertion Spring Nuts) SSP (Post-Assembly Insertion Spring Nuts Stainless Steel) SEC (Screws with Captured Washer and Nuts)	Applicable screws and nuts for fixing the brackets on extrusions come in a set. (Adds to the bracket price.)	HBKTS6
		(Ex.) When HBLTS6 is specified:	HBKTS6
		Code Screw Nut	NBLTS6
		SET CBM6-15 HNTT6-6	HBLTS6
		SST SCB6-15 HNTT6-6	
		SEU CBM6-15 HNTU6-6	
		SSU SCB6-15 SHNTU6-6	
		SEP CBM6-15 HNTTP6-6	
		SSP SCB6-15 SHNTTP6-6	
		SEC HCBST6-20 HNTT6-6	HBLTS6-5
*When specifying other than HBLTS6, check for the applicable screws and nuts.			HBLTSB6
			CHBLTS6
			HBKUS6

① Screws for black anodized brackets are HCBMTB (Trivalent Chromate Black) on P751.
② Included Screw is not RoHS compliant when -SET, -SEU or -SEP other than black anodized brackets is specified.