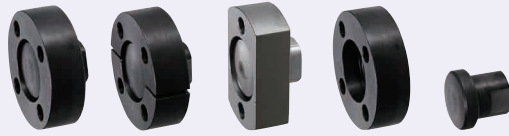


# Floating Joints Flange Mounting

[Tapped] Standard Type

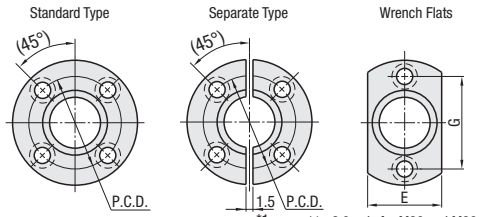
■ Features: Connector can be fixed securely by a flange.



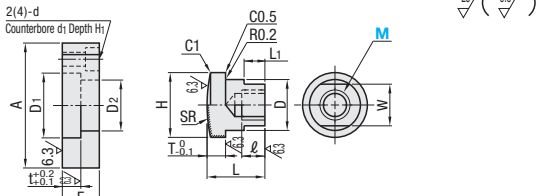
RoHS 10

Set			Type			Material	Hardness		Surface Treatment		
Standard	Separate	Wrench Flats	L Fixed	L Configurable	Flange only		Flange	Connector			
FJA	FJB	FJC	FJCN	FJCNL	FJA-H	FJB-H	FJC-H	S45C	40HRC~ 45HRC~	Section from 45 HRC Induction Hardened	Black Oxide
FJAS	FJBS	FJCS	FJCMS	FJCNLS	FJAS-H	FJBS-H	FJCS-H	SUS440C or 13Cr stainless			

## Mount Flanges



## Cylinder Connector



⊕ SUS440C or 13Cr stainless Hardened Type may be discolored due to hardening. ⊕ Refer to Allowable Misalignment on the right-hand page.

Set	Part Number	Mount Flanges													Cylinder Connector							Unit Price											
		Type	M	A	D1	D2	t	F	P.C.D.	d	d1	H1	E	G	MxPitch	ℓ	L	D	H	T	W	L1	SR	FJA	FJB	FJC	FJAS	FJBS	FJCS				
Standard	3	42	18	13	5	10	30	4.5	8	5	24	30	3x0.5	6	15	12	17	5	10	6	40												
	4	48	20	15	6	12	34	6	9.5	5.5	28	34	4x0.7	8	20	14	19	6	12	8	50												
	5	51	24	17	8	16	37	7	11	6	30	37	5x0.8	10	25	16	23	8	14	10	60												
Separate	10	54	28	21	8	16	40	7	11	6	32	40	6x1.0	12	25	20	27	8	17	10	60												
	12	70	36	27	10	20	52	10	14	8	42	52	8x1.25	18	35	25	34	10	22	12	100												
	14	74	38	29	10	20	56	10	14	8	44	56	10x1.25	21	35	25	34	10	22	12	100												
Wrench Flats	16	90	46	35	12	24	68	12	17.5	10	54	68	12x1.25	24	45	32	43	12	27	15	150												
	18	90	46	35	12	24	68	12	17.5	10	54	68	14x1.5	27	45	32	43	12	27	15	150												
	20	106	56	44	15	30	80	14	20	12	66	80	16x1.5	30	55	40	52	15	32	18	200												
	22	116	66	53	16	32	86	14	20	12	78	86	18x1.5	33	60	49	62	16	41	23	200												
	24	116	66	53	16	32	86	14	20	12	78	86	20x1.5	36	60	49	62	16	41	23	200												
	26	116	66	53	16	32	86	14	20	12	78	86	22x1.5	39	60	49	62	16	41	23	200												
Wrench Flats	30	134	74	59	18	40	104	18	26	18	80	104	24x1.5	43	65	54	69	18	46	24	250												
	36	134	74	59	18	40	104	18	26	18	80	104	26x1.5	45	65	54	69	18	46	24	250												

## Connector only (See the Set Size Table for detailed sizes.)

Part Number	Type	L		Unit Price			
		M	Fixed	Configurable (1mm Increment)	FJCN	FJCNL	FJCNLS
L Fixed FJCN FJCNLS	3	15					
	4	20					
	5	25	30-60				
	6	30					
	8	35	40-80				
	10	40					
L Configurable FJCNL FJCNLS	12	45	50-100				
	14	50					
	16	55					
	18	60	60-100				
	20	65					
	22	70					

## Flange only (See the Set Size Table for detailed sizes.)

Part Number	Type	M	Unit Price					
			FJA-H	FJB-H	FJC-H	FJAS-H	FJBS-H	FJCS-H
Standard FJA-H FJAS-H	3							
	4							
	5							
	6							
	8							
	10							
	12							
	14							
	16							
	18							
	20							
	22							
Separate FJB-H FJBS-H	12							
	14							
	16							
	18							
	20							
	22							
Wrench Flats FJC-H FJCS-H	20							
	22							
	24							
	26							
	30							
	36							

• Connector only L Configurable

Part Number - L  
FJCNL10 - 50

• Other Than Above

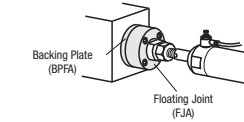
Part Number  
FJA10

Part Number - (AWC)  
FJA10 - AWC

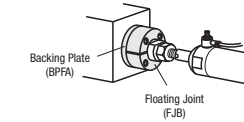
Alteration	Flange Cut	
	Code	Spec.
	AWC	Cuts four sides of the flange. (Ordering Code) AWC ⊗ Standard Type only (Not applicable to M36)
Spec.	M	K
	3, 4	32
	5, 6	36
	8	40
	10	42
	12, 14	54
	16, 18	68
	20, 22	80
	24, 26	86
	30	104

Example

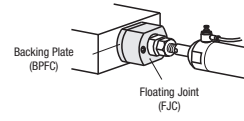
• Standard Type



• Separate Type  
Easy to assemble and remove.



• Wrench Flats  
Can be used in limited spaces.



# Floating Joints Flange Mounting

[Tapped] Space Saving Type

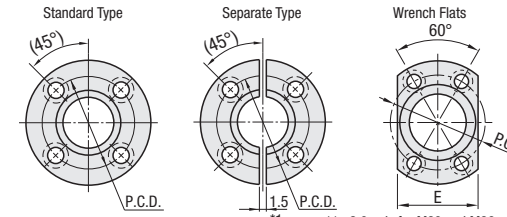
■ Features: Compact Type with small diameter of a mounting screw. Floating Connectors for Air Cylinders.



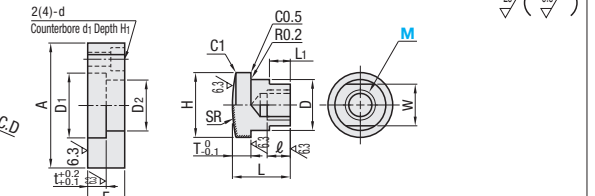
RoHS 10

Set			Type			Material	Hardness		Surface Treatment	
Standard	Separate	Wrench Flats	L Fixed	Standard	Separate		Wrench Flats	Flange		Connector
FJUA	FJUB	FJUC	FJUN	FJUA-H	FJUB-H	FJUC-H	S45C	40HRC~ 45HRC~	Section from 45 HRC Induction Hardened	Black Oxide
FJUAS	-	FJUCS	FJUNS	FJUAS-H	FJUBS-H	FJUCS-H	SUS440C or 13Cr stainless			

## Mount Flanges



## Cylinder Connector



⊕ SUS440C or 13Cr stainless Hardened Type may be discolored due to hardening.

Set	Part Number	Mount Flanges													Cylinder Connector							Unit Price									
		Type	M	A	D1	D2	t	F	P.C.D.	d	d1	H1	E	G	MxPitch	ℓ	L	D	H	T	W	L1	SR	FJUA	FJUB	FJUC	FJUAS	FJUCS			
Standard	5	34	17	13	5	11	24	4.5	8	5	22	5x0.8	10	17	12	16	12	16	5	10	6	50									
	6	40	23	17	6	11	30	5	8	5	25	6x1.0	12	20	16	22	16	22	5	13	8	60									
	8	40	23	17	6	11	30	5	8	5	25	8x1.25	14	23	16	22	16	22	5	13	8	60									
Separate	10	52	32	24	5.5	12	40	6	9.5	5.5	34	10x1.25	15	25	22	30	5.5	19	10	100											
	12	52	32	24	5.5	12	40	6	9.5	5.5	34	12x1.25	18	29	22	30	5.5	19	10	100											
	14	62	39	31	8	16	48	7	11	6	41	14x1.5	21	33	22	30	5.5	19	10	100											
Wrench Flats	16	62	39	31	8	16	48	7	11	6	41	16x1.5	24	37	28	36	8	21	12	100											
	18	62	39	31	8	16	48	7	11	6	41	18x1.5	27	41	28	36	8	21	12	100											
	20	74	46	36	10	20	58	10	14	8	48	20x1.5	30	46	32	42	10	26	15	200											
	22	74	46	36	10	20	58	10	14	8	48	22x1.5	33	50	32	42	10	26	15	200											
	24	80	52	42	12	24	64	10	14	8	54	24x1.5	36	55	38	48	12	32	16	200											
	26	80	52	42	12	24	64	10	14	8	54	26x1.5	39	60	38	48	12	32	16	200											
Wrench Flats	30	90	62	52	16	32	74	10	14	8	64	30x1.5	43	65	48	58	16	36	18	250											

## Connector only (See the Set Size Table for detailed sizes.)

Part Number	Type	M	Unit Price	
			FJUN	FJUNS
FJUN FJUNS	5			
	6			
	8			
	10			
	12			
	14			
	16			
	18			
	20			
	22			
	24			
	26			

## Flange only (See the Set Size Table for detailed sizes.)