

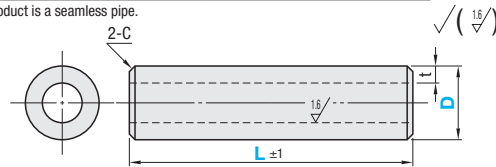
# Stainless Steel Pipes / Stainless Steel Pipe Fittings

# Stainless Steel Pipe Fittings

## Stainless Steel Pipes

Type	Material	Standards	Annealing	Gloss
SKHR	SUS304	JIS G3459	Atmospheric Annealing	Not provided
SKH			Bright Annealing (BA Pipe)	Provided
SKER	SUS316	JIS G3459	Atmospheric Annealing	Not provided
SKE			Bright Annealing (BA Pipe)	Provided

Ⓜ This product is a seamless pipe.



Ⓜ Values in ( ) are for t dimension of SKE.

D	t
4	1
6	1
6.35 (1/4 inch)	1
8	1 (1.2)
9.53 (3/8 inch)	1
10	1 (1.5)
12	1 (1.5)
12.7 (1/2 inch)	1
16	1

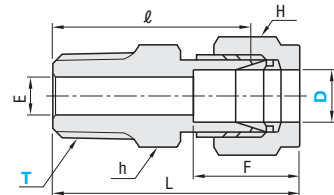
Part Number	Type	D	L mm Increment	Unit Price																			
				SKHR				SKH				SKER				SKE							
				L20-100	L101-200	L201-300	L301-400	L401-500	L20-100	L101-200	L201-300	L301-400	L401-500	L20-100	L101-200	L201-300	L301-400	L401-500	L20-100	L101-200	L201-300	L301-400	L401-500
	SKHR	4	20-500																				
	SKH	6																					
	SKER	8																					
	SKE	9.53 (3/8 inch)																					
		10																					
		12																					
		12.7 (1/2 inch)																					
		16																					

Ordering Example: Part Number - L, SKHR - 300

Ⓜ For tightening procedure and structure of fittings, and applicable pipe specification, refer to P1300.

## Stainless Steel Pipe Fittings Connectors

### SKTGK



Ⓜ Includes ferrules (see SKFPK) Ⓜ Material: SUS316

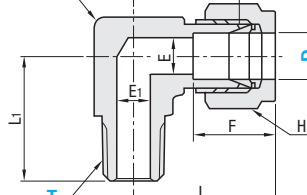
Part Number	Type	D	R (PT) Selection	T R (PT)	L	E	F	l	Square		Unit Price	Volume Discount Rate
									Main Body h	Nut H		
SKTGK	3.18 (1/8)	2	1	1/8	32.9	2.5	13.4	26	12	12	1 - 9 pcs(s), 10 - 30 pcs.	
					34.9	2.5	13.4	28	14	12		
					35.8	3.5	15.3	28.5	14	14		
	4	1	1/4	37.8	3.5	15.3	30.5	14	14			
				35.9	5	15.4	28.5	14	14			
				37.9	5	15.4	30.5	14	14			
	6	2	3/8	38.9	5	15.4	31.5	17	14			
				44.4	5	15.4	37	22	14			
				35.9	5	15.4	28.5	14	14			
	6.35 (1/4)	3	3/8	38.9	5	15.4	31.5	17	14			
				36.8	5	16.8	29	14	15.9			
				38.8	6	16.8	31	14	15.9			
8	3	3/8	39.8	6	16.8	32	17	15.9				
			45.3	6	16.8	37.5	22	15.9				
			39.8	7	17.8	32	17	19				
9.53 (3/8)	4	3/8	40.8	7.5	17.8	33	17	19				
			46.3	7.5	17.8	38.5	22	19				
			39.8	7	17.8	32	17	19				
10	4	3/8	40.8	8	17.8	33	17	19				
			46.3	8	17.8	38.5	22	19				
			42.8	7	22.8	32	22	23				
12	3	3/8	43.8	9	22.8	33	22	23				
			49.3	10	22.8	38.5	22	23				
			42.8	7	22.8	32	22	23				
12.7 (1/2)	4	3/8	43.8	9	22.8	33	22	23				
			49.3	10	22.8	38.5	22	23				
			42.8	7	22.8	32	22	23				

Ⓜ L and F are dimensions for hand tightening. Ⓜ Values in ( ) for D dimension are by inch.

Ordering Example: Part Number - T, SKTGK6 - 3, SKTGLK9.53 - 4

## Stainless Steel Pipe Fittings Elbow

### SKTGLK



Ⓜ Includes ferrules (see SKFPK) Ⓜ Material: SUS316

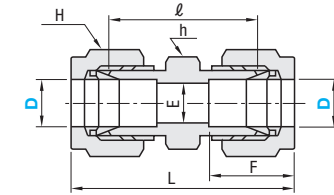
Part Number	Type	D	R (PT) Selection	T R (PT)	L	L1	E	E1	F	l	Square		Unit Price	Volume Discount Rate
											Main Body h	Nut H		
SKTGLK	3.18 (1/8)	1	1/8	1/8	24.9	22	2.5	5	13.4	18	12	12	1 - 9 pcs(s), 10 - 30 pcs.	
					25.9	24	2.5	5	13.4	19	14	12		
					27.8	22	3.5	5	15.3	20.5	14	14		
	4	2	1/4	27.8	24	3.5	5	15.3	20.5	14	14			
				27.9	22	5	5	15.4	20.5	14	14			
				27.9	24	5	5	15.4	20.5	14	14			
	6	2	3/8	28.9	27	5	5	15.4	21.5	17	14			
				30.9	35	5	5	15.4	23.5	22	14			
				27.9	22	5	5	15.4	20.5	14	14			
	6.35 (1/4)	3	3/8	27.9	24	5	5	15.4	20.5	14	14			
				28.9	27	5	5	15.4	21.5	17	14			
				28.8	22	5	5	16.8	21	14	15.9			
8	3	3/8	28.8	24	6	6	16.8	21	14	15.9				
			29.8	27	6	6	16.8	22	17	15.9				
			31.8	35	6	6	16.8	24	22	15.9				
9.53 (3/8)	4	3/8	30.8	27	7.5	7	17.8	23	17	19				
			30.8	27	7.5	8	17.8	23	17	19				
			32.8	35	7.5	8	17.8	25	22	19				
10	4	3/8	30.8	27	7	7	17.8	23	17	19				
			30.8	27	8	8	17.8	23	17	19				
			32.8	35	8	8	17.8	25	22	19				
12	3	3/8	35.8	30	9	9	22.8	25	22	23				
			35.8	30	9	9	22.8	25	22	23				
			35.8	35	10	10	22.8	25	22	23				
12.7 (1/2)	4	3/8	35.1	28	10	7	22.8	25	22	23				
			35.1	30	10	9	22.8	25	22	23				
			35.1	35	10	10	22.8	25	22	23				

Ⓜ L and F are dimensions for hand tightening. Ⓜ Values in ( ) for D dimension are by inch.

Ⓜ For tightening procedure and structure of fittings, and applicable pipe specification, refer to P1300.

## Stainless Steel Pipe Fittings Union

### SKUSK



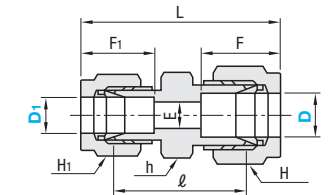
Ⓜ Includes ferrules (see SKFPK) Ⓜ Material: SUS316

Part Number	Type	D	L	E	F	l	Square		Unit Price	Volume Discount Rate
							Main Body h	Nut H		
SKUSK	3.18 (1/8)	4	37.8	2.5	13.4	24	12	12	1 - 9 pcs(s), 10 - 30 pcs.	
			42.6	3.5	15.3	28	14	14		
			42.8	5	15.4	28	14	14		
	6.35 (1/4)	6	44.6	6	16.8	29	14	15.87		
			46.6	8	17.8	31	17	19		
			46.6	8	17.8	31	17	19		
12.7 (1/2)	12	52.6	10	22.8	31	22	23			
		52.6	10	22.8	31	22	23			

Ⓜ L and F are dimensions for hand tightening. Ⓜ Values in ( ) for D dimension are by inch.

## Stainless Steel Pipe Fittings Reducing Union

### SKUSDK



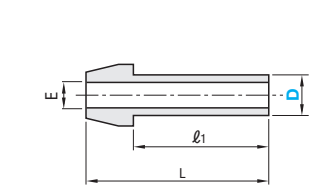
Ⓜ Includes ferrules (see SKFPK) Ⓜ Material: SUS316

Part Number	Type	D	D1	L	E	F	l	Square		Unit Price	Volume Discount Rate	
								Main Body h	Nut H			
SKUSDK	6.35 (1/4)	3.18 (1/8)	4	40.8	2.5	15.4	13.4	26.5	14	14	12	1 - 9 pcs(s), 10 - 30 pcs.
				42.7	3.5	15.4	15.3	28	14	14		
				43.6	3.5	16.8	15.3	28.5	14	15.87	14	
	9.53 (3/8)	6	3/8	43.7	5	16.8	15.4	28.5	14	15.87	14	
				44.7	5	17.8	15.4	29.5	17	19	14	
				44.7	5	17.8	15.4	29.5	17	19	14	
	10	8	3/8	45.6	6	17.8	16.8	30	17	19	15.87	
				47.7	5	22.8	15.4	29.5	22	23	14	
				49.6	8	22.8	17.8	31	22	23	19	
	12.7 (1/2)	12	3/8	47.7	5	22.8	15.4	29.5	22	23	14	
				47.7	5	22.8	15.4	29.5	22	23	14	

Ⓜ L and F are dimensions for hand tightening. Ⓜ Values in ( ) for D and D1 dimension are by inch.

## Stainless Steel Pipe Fittings Port Connector

### SKPCK



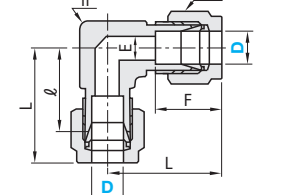
Ⓜ Material: SUS316

Part Number	Type	D	L	E	l1	Unit Price	Volume Discount Rate
SKPCK	3.18 (1/8)	4	23	1.8	16		
			26	2.5	19		
			27	4	20		
	6.35 (1/4)	6	27	4.8	20		
			28	6.4	21		
			29	7.6	22		
	9.53 (3/8)	8	29	8	22		
			37	9.5	26.7		
			37	9.9	26.7		
	12.7 (1/2)	12	37	9.9	26.7		
			37	9.9	26.7		

Ⓜ Values in ( ) for D dimension are by inch.

## Stainless Steel Pipe Fittings Union Elbow Connectors

### SKUEK



Ⓜ Includes ferrules (see SKFPK) Ⓜ Material: SUS316

Part Number	Type	D	L	E	F	l	Square		Unit Price	Volume Discount Rate
							Main Body h	Nut H		
SKUEK	3.18 (1/8)	4	24.9	2.5	13.4	18	12	12	1 - 9 pcs(s), 10 - 30 pcs.	
			27.8	3.5	15.3	20.5	14	14		
			27.9	5	15.4	20.5	14	14		
	6.35 (1/4)	6	28.8	6	16.8	21	14	15.87		
			30.8	8	17.8	23	17	19		
			30.8	8	17.8	23	17	19		
12.7 (1/2)	12	34.8	10	22.8	24	22	23			
		34.8	10	22.8	24	22	23			