

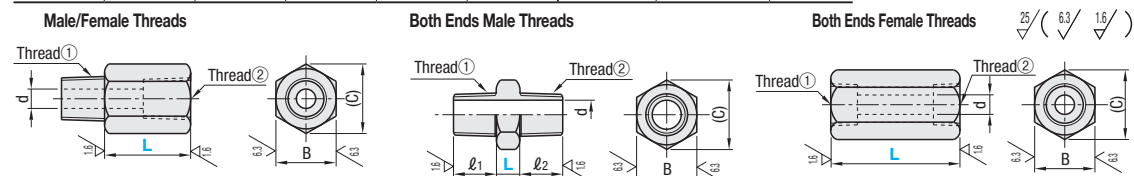
# Thread Conversion Fittings

L Fixed Type / L Configurable Type



RoHS10

Type						Material	Surface Treatment	Max. Operating Pressure	Thread JIS B 0203 R (PT) JIS B 0202 G (PF): ISO 228-1 Interchangeable ANSI/ASME B.1.20.1-1983 (NPT)
L Fixed			L Configurable						
Male/Female Threads	Both Ends Male Threads	Both Ends Female Threads	Male/Female Threads	Both Ends Male Threads	Both Ends Female Threads				
APMTF	APMMF	APMFF	APMTFL	APMMFL	APMFFL	Steel for General Structure	Electroless Nickel Plating	20.6MPa	
APMTS	APMMS	APMFS	APMTSL	APMMSL	APMFSL	SUS303	-		
APMTY	APMMY	APMFY	APMTYL	APMMYL	APMFYL	Brass	-		



\* Max. allowable operating pressure for M5 type is 1MPa or less.  
\* Male Threaded Side of M5 Type is provided with a nylon washer.

## Male/Female Threads

Part Number Type	Thread Shape ①	No.	T (PT) G (PF) N (NPT)	Thread Shape ②	No.	T (PT) G (PF) N (NPT)	L		B (C)	d	Unit Price							
							Fixed	1mm Increment			L Fixed Type		L Configurable					
											APMTF	APMTS	APMTY	APMTFL	APMTSL	APMTYL		
L Fixed Type APMTF APMTS APMTY	T (PT) G (PF) N (NPT)	1	1/8	T (PT) G (PF) N (NPT)	M5	1	1/8	15	16-30	13	14.4	4.2						
							1/8	15	16-30	13	14.4	4.5						
							1/4	20	21-35	17	19.6	4.5						
							3/8	20	21-35	17	19.6	4.2						
							1/2	20	21-35	17	19.6	4.5						
							3/8	20	21-35	19	21.9	6.5						
	L Configurable APMTFL APMTSL APMTYL	T (PT) G (PF) N (NPT)	2	1/4	T (PT) G (PF) N (NPT)	M5	1	1/8	15	16-30	17	19.6	4.2					
								1/4	20	21-35	17	19.6	6.5					
								3/8	20	21-35	19	21.9	6.5					
								1/2	20	21-35	19	21.9	9					
								3/8	20	21-35	19	21.9	9					
								1/2	25	26-40	24	27.7	9					

## Both Ends Male Threads

Part Number Type	Thread Shape ①	No.	T (PT) G (PF) N (NPT)	Thread Shape ②	No.	T (PT) G (PF) N (NPT)	L		B (C)	d	Unit Price							
							Fixed	1mm Increment			L Fixed Type		L Configurable					
											APMMF	APMMS	APMMY	APMMFL	APMMSL	APMMYL		
L Fixed Type APMMF APMMS APMMY	T (PT) G (PF) N (NPT)	1	1/8	T (PT) G (PF) N (NPT)	M5	1	1/8	10	11-30	13	14.4	7.5	3					
							1/8	10	11-30	13	14.4	10	4.5					
							1/4	17	19.6	10	12	4.5						
							3/8	17	19.6	12	7.5	3						
							1/2	17	19.6	12	10	4.5						
							3/8	19	21.9	12	13	6.5						
	L Configurable APMMFL APMMSL APMMYL	T (PT) G (PF) N (NPT)	2	1/4	T (PT) G (PF) N (NPT)	M5	1	1/8	10	11-30	17	19.6	12	10	4.5			
								1/4	17	19.6	12	6.5						
								3/8	19	21.9	12	13	6.5					
								1/2	19	21.9	13	12	6.5					
								3/8	19	21.9	13	9						
								1/2	24	27.7	13	17	9					

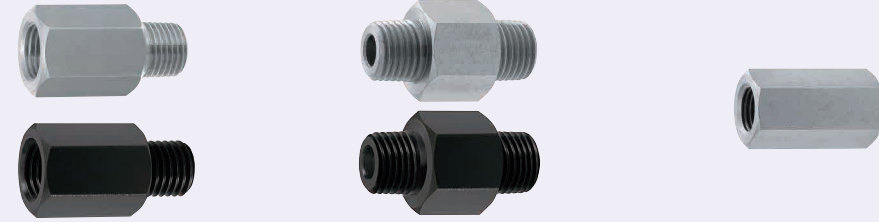
## Both Ends Female Threads

Part Number Type	Thread Shape ①	No.	T (PT) G (PF) N (NPT)	Thread Shape ②	No.	T (PT) G (PF) N (NPT)	L		B (C)	d	Unit Price						
							Fixed	1mm Increment			L Fixed Type		L Configurable				
											APMFF	APMFS	APMFY	APMFFL	APMFSL	APMFYL	
L Fixed Type APMFF APMFS APMFY	T (PT) G (PF) N (NPT)	1	1/8	T (PT) G (PF) N (NPT)	M5	1	1/8	20	21-35	13	14.4	4.2					
							1/8	20	21-35	13	14.4	8.2					
							1/4	20	21-35	17	19.6	8.2					
							3/8	20	21-35	17	19.6	4.2					
							1/2	20	21-35	17	19.6	8.2					
							3/8	19	21.9	10.9							
	L Configurable APMFFL APMFSL APMFYL	T (PT) G (PF) N (NPT)	2	1/4	T (PT) G (PF) N (NPT)	M5	1	1/8	25	26-40	17	19.6	8.2				
								1/4	25	26-40	17	19.6	10.9				
								3/8	25	26-40	19	21.9	10.9				
								1/2	25	26-40	19	21.9	10.9				
								3/8	30	31-45	19	21.9	14.2				
								1/2	35	36-50	24	27.7	14.2				

Ordering Example: Part Number - Thread Shape ① - Thread Shape ② - L  
 APMTF - T2 - G3 - L20  
 APMMSL - G1 - M5 - L20

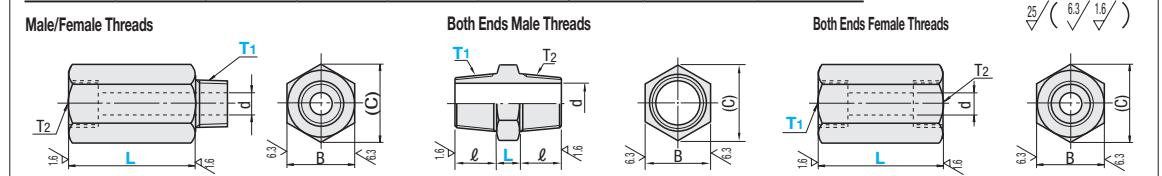
# Extension Fittings

L Selectable



RoHS10

Type						Material	Surface Treatment	Max. Operating Pressure	Thread JIS B 0203 R (PT) JIS B 0202 G (PF): ISO 228-1 Interchangeable ANSI/ASME B.1.20.1-1983 (NPT)
Male/Female Threads	Both Ends Male Threads	Both Ends Female Threads	Equal Dia.	Reducing	Equal Dia.				
EXTG	EXTGBD	EXMGB	-	-	-	Steel for General Structure	Black Oxide	20.6MPa	
EXTGS	EXTGSD	EXMGS	-	-	-	SUS303	Electroless Nickel Plating		
			EXFG	EXFGD					
			EXFGS	EXFGSD					



\* Mx. pressure of No. 5 (M5 Type) is less than 1MPa.  
\* No. 5 (M5 Type) is provided with a nylon washer.

\* For No. 5-L15, the thread may go through.

## Male/Female Threads

Part Number Type	No.	L Selection	R/Rc (PT) / M (Coarse) T1 / T2	B (C)	d	Unit Price		Male/Female Threads I.D. d			
						EXTG	EXTGS	T1	d	T1	d
Equal Dia. EXTG EXTGS	1	20 25 30	1/8	14	16.2	4.5		M5	2.0 (3.0)	NPT1/8	4.5
	2	25 30 35	1/4	19	21.9	6.5		R1/8	4.5	NPT1/4	6.5
	3	30 35 40	3/8	24	27.7	9.0		R1/4	6.5	NPT3/8	9.0
	4	35 40 45	1/2	27	31.2	10.0		R3/8	9.0	NPT1/2	10.0
	5	15 20	M5	8	9.2	2.0		R1/2	10.0		

Part Number Type	No.	M (Coarse) / R (PT) / NPT Selection	L Selection	Rc (PT) T2	B (C)	d	ℓ	Unit Price		Male/Female Type, Male Length ℓ	
								EXTGBD	EXTGSD	T1	ℓ
Reducing EXTGBD EXTGSD	1	5 (M5) 1N (NPT1/8)	20 25 30	1/8	14	16.2	3			1/8	11
	2	1 (1/8) 2N (NPT1/4)	25 30 35	1/4	19	21.9	4.5			1/4	13
	3	1 (1/8) 2 (1/4) 3N (NPT3/8)	30 35 40	3/8	24	27.7	6.5			3/8	15
	4	2 (1/4) 3 (3/8) 4N (NPT1/2)	35 40 45	1/2	27	31.2	9.0			1/2	17

## Both Ends Male Threads

Part Number Type	No.	L Selection	R (PT) / M (Coarse) T1 / T2	B (C)	d	ℓ	Unit Price		
							EXMGB	EXMG	EXMGS
Equal Dia. EXMGB EXMG EXMGS	1	10 15 20	1/8	14	16.2	4.5	10		
	2	10 15 20	1/4	19	21.9	6.5	10		
	3	10 15 20	3/8	24	27.7	9.0	12		
	4	10 15 20	1/2	27	31.2	10.0	17		
	5	5 10 15	M5	8	9.2	3.0	7.5		

Part Number Type	No.	M (Coarse) / R (PT) / NPT Selection	L Selection	Rc (PT) T2	B (C)	d	ℓ	Unit Price	
								EXMGSD	EXFGSD
Reducing EXMGSD	1	5 (M5) 1N (NPT1/8)	10 15 20	1/8	14	16.2	10	3	
	2	1 (1/8) 2N (NPT1/4)	10 15 20	1/4	19	21.9	10	4.5	
	3	1 (1/8) 2 (1/4) 3N (NPT3/8)	10 15 20	3/8	24	27.7	12	4.5	
	4	2 (1/4) 3 (3/8) 4N (NPT1/2)	10 15 20	1/2	27	31.2	17	6.5	

## Both Ends Female Threads

Part Number Type	No.	L Selection	Rc (PT) / M (Coarse) T1 / T2	B (C)	d	Unit Price	
						EXFG	EXFGS
Equal Dia. EXFG EXFGS	1	20 25 30	1/8	14	16.2	8.2	
	2	25 30 35	1/4	19	21.9	10.9	
	3	30 35 40	3/8	24	27.7	14.4	
	4	35 40 45	1/2	27	31.2	18.0	
	5	15 20 25	M5	8	9.2	4.2	

Part Number Type	No.	M (Coarse) / R (PT) / NPT Selection	L Selection	Rc (PT) T2	B (C)	d	Unit Price	
							EXFGD	EXFGSD
Reducing EXFGD EXFGSD	1	5 (M5) 1N (NPT1/8)	20 25 30	1/8	14	16.2	4.2	
	2	1 (1/8) 2N (NPT1/4)	25 30 35	1/4	19	21.9	8.2	
	3	1 (1/8) 2 (1/4) 3N (NPT3/8)	30 35 40	3/8	24	27.7	8.2	
	4	2 (1/4) 3 (3/8) 4N (NPT1/2)	35 40 45	1/2	27	31.2	10.9	

Ordering Example: Part Number - T1 - L  
 EXTG3 - 3 - 30  
 EXTGSD4 - 3 - 40