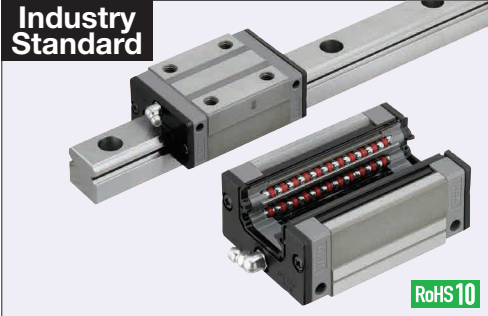


Linear Guides for Super Heavy Load - Stainless Steel

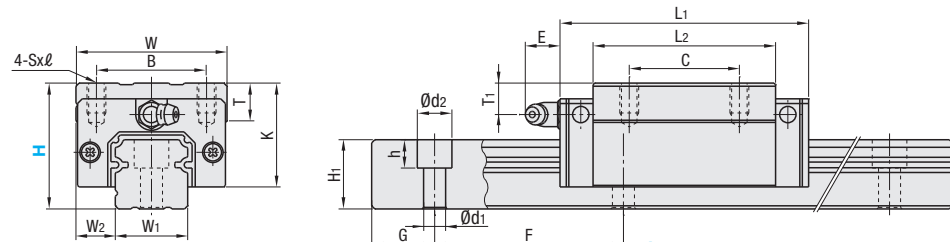
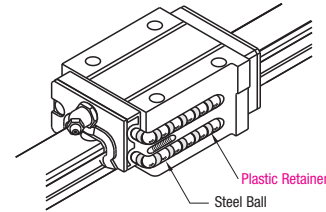
With Plastic Retainers, Interchangeable, Light Preload

Features: Linear Guides with Plastic Retainers prevent contact between balls and result in low noise levels under high-speed operation.



Material Hardness	Type		Block	Rail	L Dimension
	1 block	2 blocks			
Stainless Steel (SUS440C Equivalent) 57HRC~	SSHRZ	SSH2RZ	SSHRB	SSHZL	Selectable
	SSHRLZ	SSH2RLZ		SSHZLF	Configurable

Heat Resistant Temperature: 0 ~ 50°C



For L Configurable, G dimensions differ from those shown in the table below. For details, see P. 531.

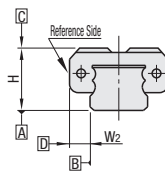
- Precautions for Use**
 - Blocks are equipped with retainers to prevent balls from falling off. For how to handle the blocks, see P. 525.
 - For Interchangeable, Light Preload Type, rails and blocks can be interchanged.
 - Straight grooves are provided on datum planes. Be sure to match the datum lines when using.
 - Rails cannot be connected end to end.
 - The accuracy of Linear Guides is guaranteed after mounting the rail (after fastening screws on the rail and pushing it onto the datum plane).
 - Minor bending of the rail will be adjusted after being mounted and will not affect the performance.
- Others**
 - Filled with Lithium soap based grease (Alvania Grease S2 by Showa Shell Sekiyu K.K.).
 - Angled Grease Fitting Type
 - Grease Fitting is screw-in type, and thus, can be repositioned.
 - For Operating Life Calculation, see P. 527
 - For operating life calculations, use our free calculation software from http://download.misumi.jp/mol/fa_soft.html.

Part Number	Block Dimension										Guide Rail Dimension										
	Type		H	L	W	L ₁	B	C	Sxℓ	L ₂	K	T	Grease Fitting			H ₁	W ₁	W ₂	Counterbored Hole d ₁ x ₂ x _h	F	G
	1 block	2 blocks											Mounting Hole	E	T ₁						
SSHRZ SSHRLZ	SSH2RZ SSH2RLZ	30	220~1480	44	69.8	32	36	M5x6	50	25	12	M6xP0.75	11	5	18	20	12	6x9.5x8.5	60	20	
(Block) SSHRB	(Rail) SSHZL SSHZLF	40	220~1480	48	79	35	35	M6x9	58	33	12	M6xP0.75	11	10	22	23	12.5	7x11x9	60	20	

kgf=Nx0.101972

H	Basic Load Rating		Allowable Static Moment			Mass	
	C (Dynamic) kN	Co (Static) kN	MA N·m	Mb N·m	Mc N·m	Block kg	Guide Rail kg/m
30	16.3	29.6	167	141	199	0.33	2.6
40	22.4	37.5	246	207	295	0.55	3.6

Preload and Accuracy Standards



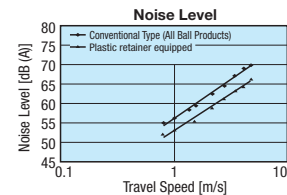
Interchangeable, Light Preload Type

Radial Clearance (µm)	
H30, 40	-5~0

Dimensional Accuracy (µm)	
Height H Tolerance	±20
Pair Variation of Height H	15
Width W ₂ Tolerance	±30
Pair Variation of Width W ₂	25
Running Parallelism of Plane C against Plane A	See P. 525
Running Parallelism of Plane D against Plane B	



Features of Plastic Retainers: Low noise levels and improved sound quality



- Lack of mutual contact between balls results in low noise levels and improved sound quality.
- Since there is no mutual contact abrasion between the balls, particle generation is less than those of conventional products.

Ordering Example: Part Number - L
SSHRZ30 - 640

Alterations Part Number - L - (RLC, LLC...etc.)
SSHRZ30 - 640 - RLC

H	Selectable L	Unit Price			
		Set	Rail	Block	
30	220	SSHRZ	SSH2RZ	SSHZL	SSHRB
	280				
	340				
	400				
	460				
	520				
	580				
	640				
	700				
	760				
	820				
	880				
	940				
	1000				
	1060				
	1120				
1180					
1240					
1300					
1360					
1420					
1480					
40	220				
	280				
	340				
	400				
	460				
	520				
	580				
	640				
	700				
	760				
	820				
	880				
	940				
	1000				
	1060				
	1120				
1180					
1240					
1300					
1360					
1420					
1480					

Alterations	Code	Spec.
Rail End Cut LLC RLC	Left End Cut LLC Right End Cut RLC	Cuts rail ends. Ordering Code: LLC H L Cut N 30 10 10 40 Rail is cut with the product ID facing out (datum on other side). Applicable to Selectable Type only. Overall length will be shorter by cutting.
3-Block Specifications	B3	Adds 1 block to 2-Block product to ship as 3-Block separate item. Selection Example: SSHRZ30-400-B3
4-Block Specifications	B4	Adds 2 blocks to 2-Block product to ship as 4-Block separate item. Selection Example: SSHRZ30-400-B4

Position of Grease Fitting (Reference plane on the front side)

Additional Block Price

H	1Code	
	B3	B4
30		
40		

Selectable Shortest Rail Length for B3/B4

H	B3 (3-Block)	B4 (4-Block)
30	340	400
40	400	460

Options for Linear Guide

Linear Guide Clamps	Rail Height Adjusting Blocks
P608	P609, 610

Block Derailment Prevention Parts / Dust Resistant Parts	Block / Rail Fixing Parts
<ul style="list-style-type: none"> Stopper Bolts P612 Block Stopper Plates P612 Rail Mounting Hole Caps P612 	<ul style="list-style-type: none"> Rail Push Plates P612 Linear Locks P613 Linear Guide Lock Units P614

L Dimension Configurable Type (1mm Increment)

H	Unit Price	
	Set	Rails
30	SSHRLZ	SSH2RLZ
40		SSHZLF

For calculation of L Dimension Configurable Type (1mm Increment), add the above amount to the unit price of the Selectable Type longer than, and closest to this L Dimension Configurable Type.