

Housing Units

Wide Blocks - Single / Medium

= For customers using industry standard products =
 The part enclosed in the red frame is as per industry standard specifications (Outer cylinder SUJ2 equivalent, Retainer resin). Consider these specifications while selecting the product.

Features: A design that reduces linear bushing assembly steps. Four mounting holes enable solid mounting with the load.

Industry Standard

Single

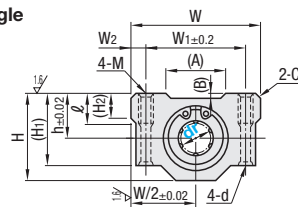


Medium

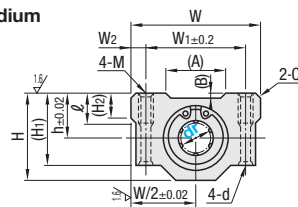


Type		Linear Bushing Used		Housing		Ambient Operating Temp.
Single	Medium	(P315)	(P317)	Material	Surface Treatment	
LHBB	LHBB	LMU	LMUD	Aluminum Alloy	Clear Anodize	-20~ 80°C
LHBBF	LHBBF	LMUF	-	-	-	-20~110°C

Single



Medium



Features of Medium Type Bushings
 Body length is approximately 1.4 times of single type and allowable moment is approximately 4.3 times: suitable where there is no enough space for double type.

6.3 / (1.6 /)
 (Housing)

dr	Tolerance		L		L1		h	H	(H1)	(H2)	W	W1	W2	M	d	ℓ	(A)	(B)	C
	Single	Medium	Single	Medium	Single	Medium													
(5)	0	-0.008	18	12	7	14	11	-	22	16	3	M3	-	-	-	-	-	-	0.5 or less
6	0	-0.009	25	35	15	24	9	18	15	6	30	20	5	M4	3.4	8	12	0.4	1 or less
8			30	43	18	28	11	22	18	40	28	6	M5	4.3	12	15.5	0.85		
10			35	53	21	34	13	26	21	40	28	6	M5	4.3	12	17.5			
12			36	53	26	38	15	28	24	42	30.5	5.75	M5	4.3	12	19.8			
13	0	-0.010	39	54	34	48	19	38.5	32.5	9	50	36	7	M6	5.2	18	21	0.5	1.5 or less
16			44	63	40	56	21	41	35	11	54	40	10	M8	7	18	36	0.75	
20			50	73	50	66	26	51.5	42	12	76	54	11	M8	7	18	39.9	0.75	
25			67	93	60	70	30	59.5	49	15	78	58	10	M8	7	18	53	0.75	
30	0	-0.010	72	100	60	80	34	68	54	18	90	70	11	M10	8.7	25	61	1.5	2 or less
35			80	-	60	-	40	78	62	20	102	80	11	M10	8.7	25	81	1.5	
40			90	-	60	-	40	78	62	20	102	80	11	M10	8.7	25	81	1.5	
(50)	0	-0.012	110	-	80	-	52	102	80	25	122	100	11	M10	8.7	25	81	1.5	2 or less

For Precautions for Use, see P303. dr5 appearance will be different from the drawings above. dr () are available for Single Type only.
 The datum surface is located on the other side of product ID label.

Housing Units

Wide Blocks - Double / Medium Long / Long

= For customers using industry standard products =
 The part enclosed in the red frame is as per industry standard specifications (Outer cylinder SUJ2 equivalent, Retainer resin). Consider these specifications while selecting the product.

Features: A design that reduces linear bushing assembly steps. Four mounting holes enable solid mounting with the load.

Industry Standard

Double



Medium Long

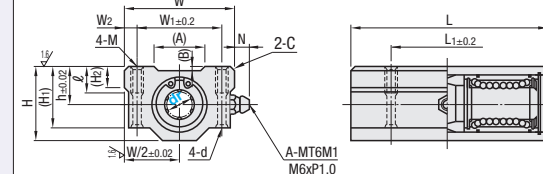


Long

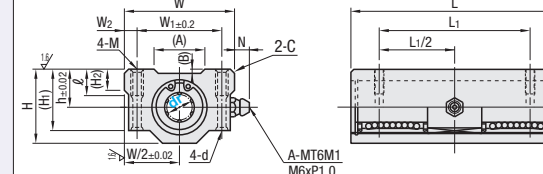


Type			Linear Bushing Used	Housing		Ambient Operating Temp.
Double	Medium Long	Long	(P315)	Material	Surface Treatment	
LHBBW	LHBS	LHBL	LMU	Aluminum Alloy	Clear Anodize	-20~ 80°C
LHBBWF	-	-	LMUF	-	-	-20~110°C

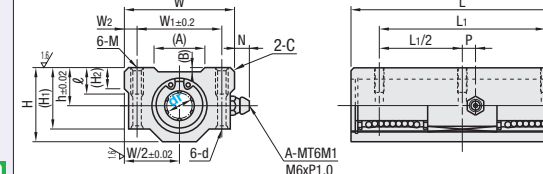
Double



Medium Long



Long



Features of Double Type
 Body length is approximately 1.9 times of the type and allowable moment is approximately 6 times.

Features of Medium Long Type
 Body length is approximately 2.2 times of single type and allowable moment is approximately 10 times; suitable where no space for long type is available.

Features of Long Type
 Body length is approximately 2.7 times of the single type. Allowable moment is approximately 21 times.

6.3 / (1.6 /)
 (Housing)

dr	Tolerance			L			L1			h	H	(H1)	(H2)	W	W1	W2	M	d	ℓ	(A)	(B)	N	P	C	
	Double	Medium Long	Long	Double	Medium Long	Long	Double	Medium Long	Long																
(5)	0	-0.008	-	33	-	-	25	-	-	7	14	11	-	22	16	3	M3	-	-	-	-	-	-	0.5	
(6)	0	-0.009	-0.010	48	-	-	36	-	-	9	18	15	6	30	20	5	M4	3.4	8	12	0.4	7.5	-	1	
(8)				58	-	-	42	-	-	11	22	18	34	24	6	40	28	6	M5	4.3	12	15.5	0.85	6.5	8
10				68	-	93	46	-	70	13	26	21	40	28	6	40	28	6	M5	4.3	12	17.5	0.85	6.5	8
12				70	-	96	50	-	72	15	28	24	8	42	30.5	5.75	44	33	5.5	M5	4.3	12	19.8	0.85	6.5
13	0	-0.010	-0.012	75	-	103	50	-	78	15	30	24.5	8	44	33	5.5	M5	4.3	12	19.8	0.85	6.5	8	1.5	
*16				85	100	118	60	74	88	19	38.5	32.5	9	50	36	7	M6	5.2	18	21	0.5	7.5	8	1.5	
*20				96	115	134	70	84	100	21	41	35	11	54	40	10	M6	5.2	18	21	0.5	7.5	8	1.5	
*25				130	160	185	100	118	138	26	51.5	42	12	76	54	11	M8	7	18	36	1	4.5	9	1.5	
*30	0	-0.012	-0.018	140	170	200	110	130	150	30	59.5	49	15	78	58	10	M8	7	18	39.9	0.75	5.5	9	1.5	
(35)				155	-	-	120	-	-	34	68	54	18	90	70	10	M8	7	18	53	0.75	5.5	9	1.5	
(40)				175	-	-	140	-	-	40	78	62	20	102	80	11	M10	8.7	25	61	1.5	5.5	-	-	2
(50)	0	-0.015	-	215	-	-	160	-	-	52	102	80	25	122	100	11	M10	8.7	25	81	1.5	5.5	-	2	

For Precautions for Use, see P303. dr () is only available for Double Type, only sizes with * are available for Medium Long Type. dr5 appearance will be different from the drawings above.
 Grease fitting is not available on Double Type dr5. The datum surface is located on the other side of product ID label.

Part Number	Unit Price		
	Single	Medium	Long
(Single) LHBB	LHBB	LHBBF	LHBB
(Medium) LHBB	LHBB	LHBBF	LHBB

dr	Basic Load Rating				Allowable Static Moment (N·m)		Mass (g)	
	C (Dynamic) N	Co (Static) N	Single	Medium	Single	Medium	Single	Medium
5	167	-	206	-	-	-	14	-
6	206	226	265	310	-	1.42	34	48
8	265	310	380	452	-	2.12	52	78
10	372	508	549	718	-	4.37	92	142
12	412	634	598	814	-	6.2	102	144
13	510	640	784	826	-	6.2	120	172
16	775	1164	1180	1448	-	13.1	220	323
20	882	1554	1370	2068	-	18.3	255	382
25	980	1725	1570	3068	-	25.3	600	866
30	1570	2440	2740	3974	-	42.7	735	1061
35	1670	-	3140	-	-	-	1100	-
40	2160	-	4020	-	-	-	1590	-
50	3820	-	7940	-	-	-	3340	-

kgf=Nx0.101972

Part Number	Unit Price			
	Double	Medium Long	Long	Long
(Double) LHBBW	LHBBW	LHBBWF	LHBS	LHBL
(Medium Long) LHBS	LHBS	LHBS	LHBS	LHBL
(Long) LHBL	LHBL	LHBL	LHBL	LHBL

dr	Basic Load Rating				Allowable Static Moment (N·m)		Mass (g)	
	C (Dynamic) N	Co (Static) N	Single	Medium	Double	Medium Long	Double	Medium Long
5	263	-	-	412	-	-	1.38	-
6	324	-	-	529	-	-	2.18	8.2
8	431	-	-	784	-	-	4.31	16.0
10	588	-	588	1100	-	1100	7.24	27.0
12	657	-	657	1200	-	1200	10.9	20.5
13	813	-	813	1570	-	1570	11.6	42.9
16	1230	1230	1230	2350	2350	2350	19.7	73.5
20	1400	1400	1400	2740	2740	2740	26.8	98.0
25	1560	1560	1560	3140	3140	3140	43.4	157
30	2490	2490	2490	5490	5490	5490	82.8	297
35	2650	-	-	6270	-	-	110	373
40	3430	-	-	8040	-	-	147	553
50	6080	-	-	15900	-	-	397	6700

kgf=Nx0.101972

Ordering Example
 Part Number

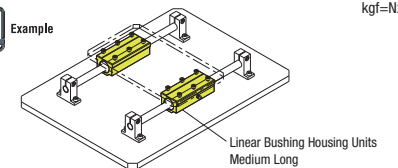
- LHBB12 (L Type Greased)
- LHBB16 (G Type Greased)
- LHBB12L (L Type Greased)
- LHBB16G (G Type Greased)
- LHBB20H (H Type Greased)

Alternative grease types available.
 For Days to Ship, Price and Performance, see P304

Ordering Example
 Part Number
 LHBBW12 (L Type Greased)
 LHBBW12L (G Type Greased)
 LHBBW16G (H Type Greased)
 LHBL20H (H Type Greased)

Alternative grease types available.
 For Days to Ship, Price and Performance, see P304

Example



Linear Bushing Housing Units
 Medium Long