

Strut Clamps

Slotted Hole / L-Shaped

Strut Clamps / Bar Clamps

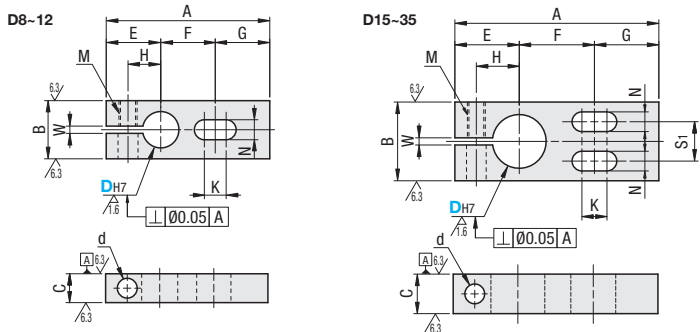
Arm

Features: Slotted holes enable fine adjustments when mounting.

Slotted Hole

Type	Material	Surface Treatment	Accessory
KMCU	SS400	Black Oxide	Hex Socket Head Cap Screw
MMCU	SS400	Electroless Nickel Plating	Hex Socket Head Cap Screw
AMCU	A6063	Black Anodize	Hex Socket Head Cap Screw
SMCU	SUS304	-	Hex Socket Head Cap Screw

6.3 / (6.3 / 1.6 /)



RoHS10

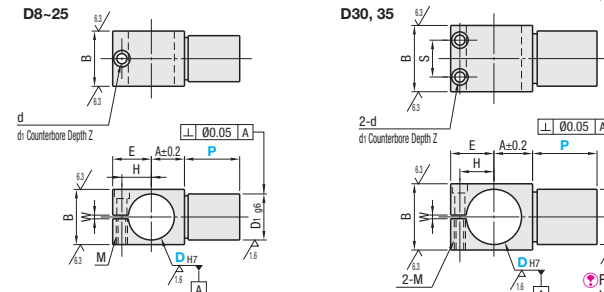
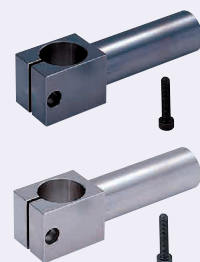
Features: Combined with Strut Clamps, mounted posts can be adjusted in a circumferential direction.

Strut Clamps

Type	Material	Surface Treatment	Accessory
KLKA	Steel for General Structure	Black Oxide	Hex Socket Head Cap Screw
MKA	Steel for General Structure	Electroless Nickel Plating	Hex Socket Head Cap Screw
ALKA	Aluminum Alloy	Black Anodize	Hex Socket Head Cap Screw
SLKA	SUS304	-	Hex Socket Head Cap Screw

Accessory: CB screws are included with the black oxide and black anodized products, and SCB screws are included with electroless nickel plated products.

6.3 / (6.3 / 1.6 /)



RoHS10

For P Dimension 50 or more, a centering hole may remain at the end of D1.

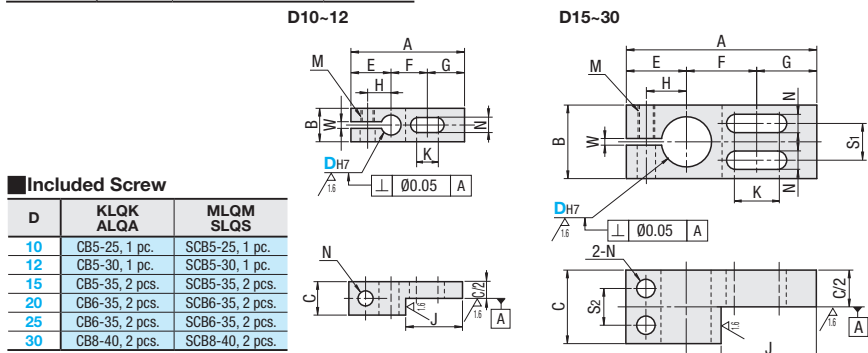
Part Number	Type	DH7	A	B	C	E	F	G	H	K	M	N	S1	d	W	Unit Price		Included Screw	
																KMCU	AMCU	CB	SCB
8		+0.015	42	12	8	14	14	14	8	8.5			-						
10		0	45	16	9	15	15	15	9	9.5	M5	5.5	-			CB5-10	1 pc.	SCB5-10	1 pc.
12		+0.018	49	16	9	16	17	16	10	10.5			-			CB5-15	1 pc.	SCB5-15	1 pc.
15		0	57	22	12	18	21	18	12	12.5			11			CB5-20	1 pc.	SCB5-20	1 pc.
20		+0.021	69	28	16	22	25	22	15	15.5	M6	6.5	14			CB6-25	1 pc.	SCB6-25	1 pc.
25		0	83	32	19	25	33	25	18	18.5			16			CB6-30	1 pc.	SCB6-30	1 pc.
30		+0.025	95	40	19	29	37	29	21	20			20			CB8-35	1 pc.	SCB8-35	1 pc.
35		0	104	45	22	32	40	32	24	23	M8	9	22			CB8-40	1 pc.	SCB8-40	1 pc.

The tolerance and perpendicularity of DH7 are before slitting. For mating, g6, f8 shaft tolerances are recommended. Tightening with a long wrench is recommended.

L-Shaped

Type	Material	Surface Treatment	Accessory
KLQK	SS400	Black Oxide	Hex Socket Head Cap Screw
MLQM	SS400	Electroless Nickel Plating	Hex Socket Head Cap Screw
ALQA	A6063	Black Anodize	Hex Socket Head Cap Screw
SLQS	SUS304	-	Hex Socket Head Cap Screw

6.3 / (1.6 /)



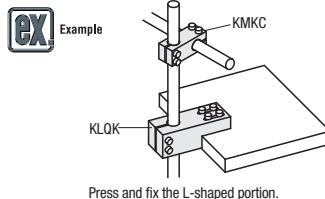
RoHS10

D	KLQK ALQA	MLQM SLQS
10	CB5-25, 1 pc.	SCB5-25, 1 pc.
12	CB5-30, 1 pc.	SCB5-30, 1 pc.
15	CB5-35, 2 pcs.	SCB5-35, 2 pcs.
20	CB6-35, 2 pcs.	SCB6-35, 2 pcs.
25	CB6-35, 2 pcs.	SCB6-35, 2 pcs.
30	CB8-40, 2 pcs.	SCB8-40, 2 pcs.

Part Number	Type	DH7	A	B	C	E	F	G	H	J	K	M	N	S1	S2	W	Unit Price			
																	KLQK	MLQM	ALQA	SLQS
10		+0.015	45	16	16	15	15	15	9	22.5	9.5			-	-					
12		0	49	16	16	16	17	16	10	24.5	10.5	M5	5.5	-	-					
15		+0.018	57	22	22	18	21	18	12	28.5	12.5			11	11					
20		0	69	28	28	22	25	22	15	34.5	15.5	M6	6.5	14	14					
25		+0.021	83	32	32	25	33	25	18	41.5	18.5			16	16					
30		0	95	40	40	29	37	29	21	47.5	20	M8	9	20	20					

The tolerance and perpendicularity of DH7 are before slitting. For mating, g6, f8 shaft tolerances are recommended. Tightening with a long wrench is recommended.

Ordering Example
Part Number
MMCU15
KLQK15



Press and fix the L-shaped portion.

Features: Bar Clamps can be used as a guide handle in combination with Strut Clamps.

Bar Clamps

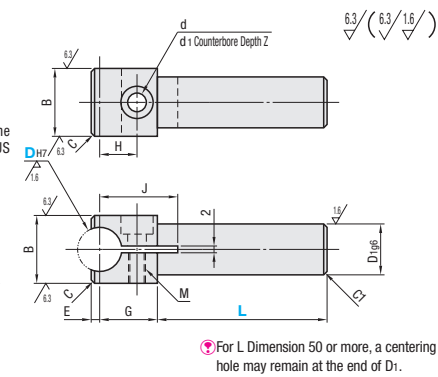
Type	Material	Surface Treatment	Accessory
BCLB	SS400	Black Oxide	Hex Socket Head Cap Screw
BCLM	SS400	Electroless Nickel Plating	Hex Socket Head Cap Screw
BCLA	A6063	Black Anodize	Hex Socket Head Cap Screw
BCLS	SUS304	-	Hex Socket Head Cap Screw

Included Screw: Black oxide and black anodize products have screw of same surface treatment, and electroless nickel plating and SUS products have stainless screw.

D	Screw Size
6	M3-8
8	M4-8
10	M5-10
12	M5-10
13	M5-15
15	M6-15
16	M6-15
20	M6-20



RoHS10



For L Dimension 50 or more, a centering hole may remain at the end of D1.

Part Number	Type	DH7	L Selection	B	D1g6	G	E	C	H	M	d	d1	Z	J	Unit Price			
															BCLB	BCLM	BCLA	BCLS
6		+0.012	25 40	12 8	-0.005	14 1			8	M3	3.4	6.5	3.5	17				
8		0		14 10	-0.014	15 1.5			9	M4	4.5	8	4.5	19				
10		+0.015		16 12		16 2			10					22				
12		0	30 50	18 12	-0.006	17 2.5			11	M5	5.5	9.5	5.5	24				
13		+0.018		20 15	-0.017	17 2.5			11					27				
15		0		23 16		19 2.5			12					31				
16		+0.021	50 70	25 20	-0.007	20 3			13	M6	6.6	11	6.5	34				
20		0		30 20	-0.020	21 3			14					35				

The tolerance and perpendicularity of DH7 are before slitting.

Ordering Example
Part Number
BCLB16 - 70