

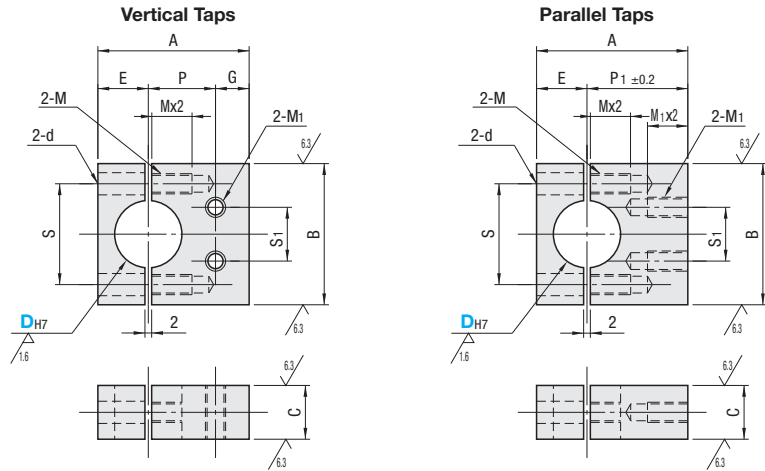
Strut Clamps

Vertical / Parallel Taps, Split

■ Features: Post-assembly mounting onto Posts for Stands in structures.

Vertical Taps, Split Parallel Taps, Split

Type	Material	Surface Treatment	Accessory
KRTP KRPP	SS400	Black Oxide	Hex Socket Head Cap Screw
M RTP M RPP		Electroless Nickel Plating	Hex Socket Head Cap Screw (Stainless Steel)
ARTP ARPP	A6063	Black Anodize	Hex Socket Head Cap Screw
S RTP S RPP	SUS304	-	Hex Socket Head Cap Screw (Stainless Steel)

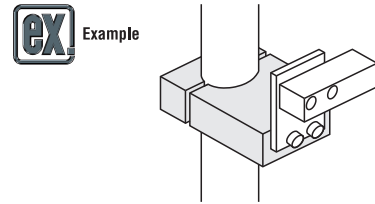


RoHS10

Part Number		A	B	C	E	P	P ₁	G	S	d	M (Coarse)	S ₁	M ₁ (Coarse)	
Vertical Taps KRTP M RTP ARTP S RTP	Parallel Taps KRPP M RPP ARPP S RPP	10	24	25	8	11	16	5	18	4.5	M4	8	M4	
		12	28	28	10	13	18	5	20	4.5	M4	8	M4	
		15	37	35	12	12	17	25	8	24	5.5	M5	12	M5
		20	45	45	16	15	20	30	10	30	6.6	M6	16	M6
		25	51	50	19	18	23	33	10	35	9	M8	20	M6
		30	60	60	19	23	27	37	10	44	9	M8	25	M8
35	66	65	22	26	30	40	10	50	9	M8	28	M8		

⚠ D_{H7} tolerance is before the slit machining. ⚠ Bore diameter 35 is not available in ARTP type.

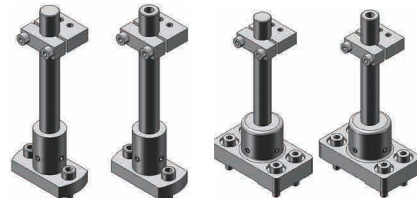
Ordering Example
Part Number
KRTP15
MRPP20



Example
Combination of these app. examples can be selected on our website.
Selection Procedure Details [P87](#)

e-Catalog Search Keyword #MA451 Search #MA452 Search

* Enter the search keyword in the search box on e-Catalog. The search result will be shown in "Modular Assembler" area.



Unit Price						Included Screw	
D	KRTP KRPP	ARTP	ARPP	M RTP MRPP	S RTP SRPP	D	Included Screw
10						10	M4-15
12						12	M4-18
15						15	M5-20
20						20	M6-25
25						25	M6-30
30						30	M8-35
35						35	M8-40

⚠ Bore diameter 35 is not available in ARTP type.

Alterations	Part Number	Spec.
Clear Anodize	ALW	Changes ARTP and ARPP from black anodize to clear anodize. ⚠ Applicable to ARTP and ARPP. ⚠ Stainless steel screws are included.

Strut Clamps

Anti-Rotation, Parallel Taps

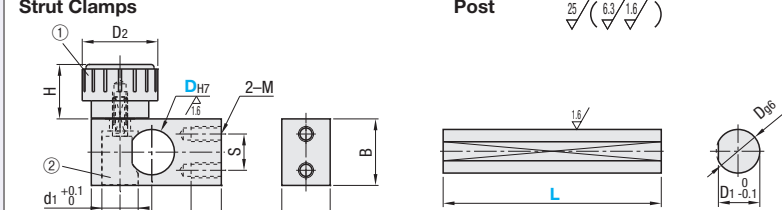
■ Features: Z direction is adjustable while preventing the rotating direction movements such as camera mounting.

Anti-Rotation, Parallel Taps



Type	Material	Surface Treatment	Material	Surface Treatment
KBYKS KBYK	S45C	Electroless Nickel Plating	SS400	Black Oxide
KBYMS KBYM				Electroless Nickel Plating
KBYSS KBYS	SUS304	-	SUS304	-

⚠ A set includes 1 pc. of clamp and 1 pc. of post. ⚠ Use the Strut Clamp on this page with the post included in the set.



No.	Name of Parts	Material
①	Knurled Knob Screw	ABS / Brass (Insert)
②	Clamp	C3604 (No Cadmium)

Part Number	D	L	D ₁	A	B	C	S	M	P	E	F	d ₁	H	D ₂
Set	Strut Clamp only	10	100 (D≤20)	9	35	19	12	10	M5	20	15	7.5	10	25
KBYKS	KBYK	12	150 (D≤20)	11	36	19	12	10	M5	20	16	8.5	10	25
KBYMS	KBYM	15	200	14	45	22(25)	16	12	M6	25	20	10.5	18	32
KBYSS	KBYS	20	250 (12≤D)	19	47	25	16	12	M6	25	22	13	18	32
		25	300 (12≤D)	23.5	55	32	16	16	M6	30	25	15	18	32

⚠ When D direction of KBYS (SUS304) is 15, B=25.

Ordering Example
Part Number - L
KBYMS15 - **250**
KBYK20

Set

D	Unit Price														
	KBYKS					KBYMS					KBYSS				
	L100	L150	L200	L250	L300	L100	L150	L200	L250	L300	L100	L150	L200	L250	L300
10															
12															
15															
20															
25															

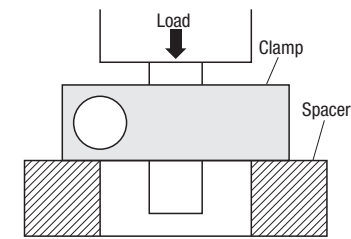
Strut Clamp only

D	Unit Price		
	KBYK	KBYM	KBYS
10			
12			
15			
20			
25			

■ Reference Data on Retention Force
Measured values with D=15 as shown below.
For SS400: 580N
For SUS304: 530N

*The above are actual measurements and not guaranteed.

<<Measuring Method for Retention Force>>



* Standard Tightening Torque 0.5 Series (N · m)
For D10, 12 and 15: 1.5
For D20 and 25: 2.6

