

# Device Stands

## Round Flanged, Through Holes

■ **Features:** A set of a post and stand for mounting a round flanged type device.

■ **Sets (Posts + Brackets)**

■ **Sets (Posts + Brackets)**

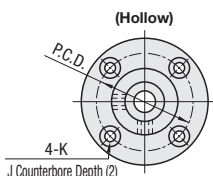
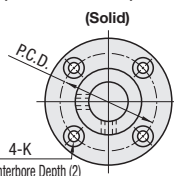
Type		Post			Bracket		Accessory	
Round Flanged	Round Flanged, Dowel Holes	Material	Hardness	Surface Treatment	Material	Surface Treatment	Solid	Hollow
CSTN	CSTA	CSPN	S45C Equivalent Induction Hardened	-	FC250	Black oxide or Phosphate Conversion Coat	Set Screw Hex Socket Head Screw	Set Screw Hex Socket Head Screw Cap (P.2143)
MCSTN	MCSTA	MCSPN	S45C Equivalent	Electroless Nickel Plating	FC250	Black oxide or Phosphate Conversion Coat		
SCSTN	SCSTA	SCSPN	SUS304	-	FC250	Electroless Nickel Plating		
CSTNM	CSTAM		S45C Equivalent Induction Hardened	Electroless Nickel Plating	FC250	Electroless Nickel Plating		
MCSTNM	MCSTAM		S45C Equivalent	Electroless Nickel Plating	FC250	Electroless Nickel Plating		
SCSTNM	SCSTAM		SUS304	-	FC250	Electroless Nickel Plating		

■ **Bracket only**

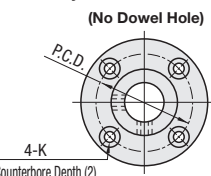
Type		Material	Surface Treatment	Accessory	
No Dowel Hole	With Dowel Holes			No Dowel Hole	With Dowel Holes
CSTF	CSPF	FC250	Black oxide or Phosphate Conversion Coat	Set Screw	Set Screw Dowel Pin (SUJ2)
CSTFM	-	FC250	Electroless Nickel Plating	Set Screw	Set Screw Dowel Pin (SUJ2)

\* Case Induction Hardened(Post): 58HRC ~, Depth 1.0 ~ 1.5  
 \* There may be no electroless nickel plating at ends and grooves of posts.  
 \* For Hex Socket Head Screws, a black oxide bracket matches a black oxide screw, and an electroless nickel plating bracket matches a trivalent chromate screw.

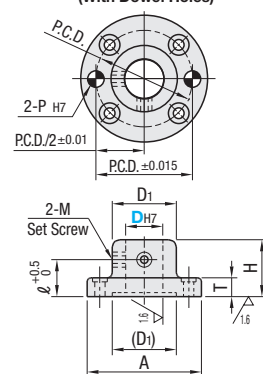
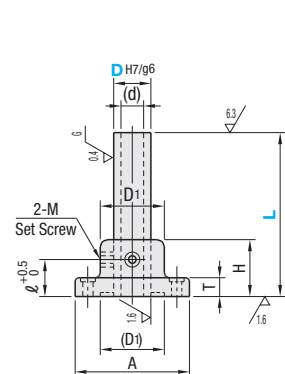
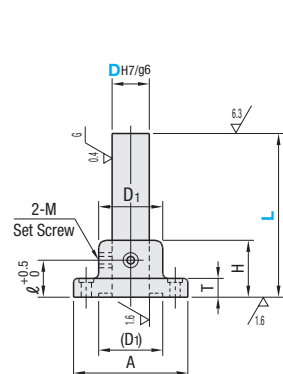
· **Sets (Posts + Brackets)**



· **Bracket only**



(With Dowel Holes)



■ **Bracket only**



RoHS10

Part Number		L 1mm Increment											Bracket with Dowel Holes		Accessory	
Type	Dg6	L	A	D1	H	T	l	P.C.D.	K	J	M	(d)	PH7	Tolerance	Included Dowel Pin (2 pcs.)	Hex Socket Head Cap Screws (Available as Set Only)
Set		10	-0.005 -0.014	50~250	56	26	35	18	43	4.5	11	M4	6.0			M4-20x4 pcs.
(Solid) CSTN MCSTN SCSTN CSTNM MCSTNM SCSTNM	(Hollow) CSTA MCSTA SCSTA CSTAM MCSTAM SCSTAM	12	-0.006 -0.017	50~300	68	28	12	18	51	5.5	13	M4	6.0			M5-20x4 pcs.
		15	-0.007 -0.020	75~350	75	31	40	20	56	6.6	15	M5	10.0			M6-25x4 pcs.
		20	-0.007 -0.020	75~400	86	40	45	25	65	6.6	15	M5	11.7	6	+0.012 0	M6-25x4 pcs.
		25	-0.007 -0.020	75~450	100	45	50	12	75				15.2			
		30	-0.009 -0.025	100~450	106	50	60	30	80		9	M6	16.0	8	+0.015 0	M8-25x4 pcs.
		35	-0.009 -0.025	125~500	118	55	70	40	90		11	M8	20.1	10	+0.015 0	M10-35x4 pcs.
		40	-0.009 -0.025	150~500	125	60	80	15	95		11	M8	22.7	10	+0.015 0	M10-35x4 pcs.
		50	-0.009 -0.025	200~600	140	70	100	50	106	14	24	M10	30.8	10	+0.015 0	M12-35x4 pcs.

Ordering Example  
 Part Number - L  
 MCSPN50 - 500  
 CSTF20

■ **Round Flanged Set**

D	L	Solid									Hollow		
		CSTN	MCSTN	SCSTN	CSTNM	MCSTNM	SCSTNM	CSTA	MCSTA	SCSTA	CSTAM	MCSTAM	SCSTAM
10	50~150												
10	151~250												
12	50~150												
12	151~300												
15	75~200												
15	201~350												
20	75~200												
20	201~400												
25	75~200												
25	201~450												
30	100~200												
30	201~450												
35	125~300												
35	301~500												
40	150~300												
40	301~500												
50	200~300												
50	301~600												

■ **Round Flanged with Dowel Holes Set**

D	L	Unit Price		
		CSPN	MCSPN	SCSPN
10	50~150			
10	151~250			
12	50~150			
12	151~300			
15	75~200			
15	201~350			
20	75~200			
20	201~400			
25	75~200			
25	201~450			
30	100~200			
30	201~450			
35	125~300			
35	301~500			
40	150~300			
40	301~500			
50	200~300			
50	301~600			

■ **Bracket only**

DH7	Tolerance	Unit Price		
		CSTF	CSTFM	CSPF
10	+0.015			
12	+0.018			
15	0			
20	+0.021			
25	0			
30	0			
35	0			
40	+0.025			
50	0			

Alterations Part Number - L - (BH)  
 CSTN15 - 150 - BH

Alterations	Code	Spec.
Mounting Holes Enlarged	BH	Enlarges mounting holes for fine-tuning.
		Ordering Code BH
		D Included Screw Adj. Range d1 d2
		Included Washer (P.2113)
		Black Oxide Electroless Nickel Plating
		10 M 4 ±1 6 13 WSSB10-4-2 WSSM10-4-2
		12 M 5 ±1 7 15 WSSB12-5-2 WSSM12-5-2
		15 M 6 ±1.5 9 18 WSSB14-6-3 WSSM14-6-3
		20 M 8 ±2 12 22 WSSB16-8-3 WSSM16-8-3
		25 M 10 ±2.5 15 28 WSSB20-10-3 WSSM20-10-3
30 M 12 ±3 18 32 WSSB25-12-5 WSSM25-12-5		

Combination of these app. examples can be selected on our website.

Example Selection Procedure Details P87

e-Catalog Search Keyword #MA129 Search e-Catalog Search Keyword #MA130 Search e-Catalog Search Keyword #MA131 Search e-Catalog Search Keyword #MA132 Search

