

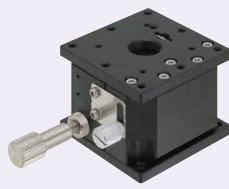
[High Precision] Z-Axis Cross Roller Micrometer Head / Feed Screw

Features: Suitable for highly accurate fine adjustment of horizontal surface of Z-axis.

Horizontal Surface Z-Axis, Cross Roller ZLPG (Micrometer Head Lead 0.5)

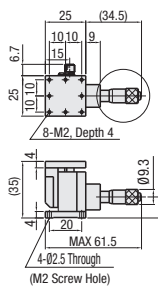


ZLPCG (Feed Screw Pitch 0.5)

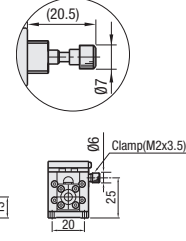


RoHS10

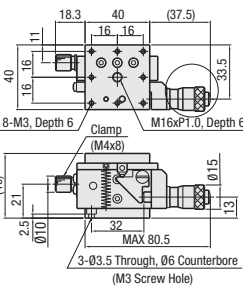
ZLPG25 (Micrometer Head)



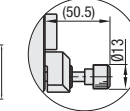
ZLPCG25 (Feed Screw)



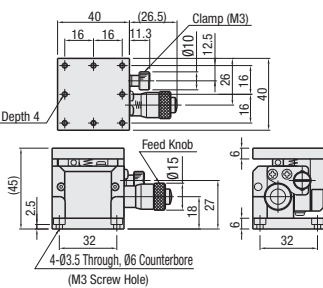
ZLPG40 (Micrometer Head)



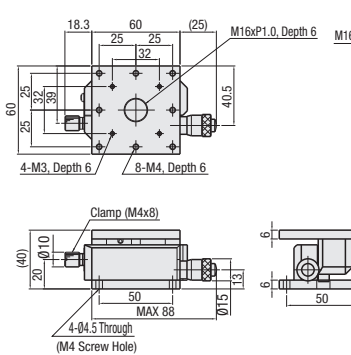
ZLPCG40 (Feed Screw)



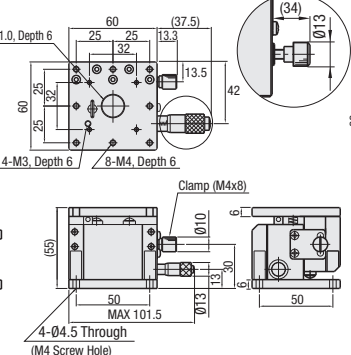
ZLPG40H (Micrometer Head)



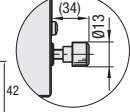
ZLPG60L (Micrometer Head)



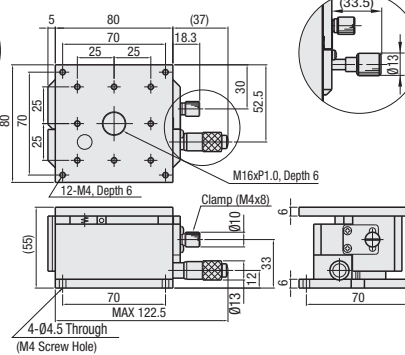
ZLPG60 (Micrometer Head)



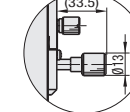
ZLPCG60 (Feed Screw)



ZLPG80 (Micrometer Head)



ZLPCG80 (Feed Screw)



Material: Aluminum Alloy

The height dimensions in () are the dimensions at the center of the travel distance.

See the CAD data for details. Surface Treatment: Black Anodize

Standard Stages Similar Products (available for limited sizes only): ZLLB (P.1971)

Part Number Type	Stage Surface No.	Stage Surface (mm)	Travel Distance (mm)	Load Capacity (N)	Travel Accuracy Straightness	Moment Load Capacity (N · m)			Moment Rigidity (1/N · cm)			Parallelism	Weight (kg)	Accessory		Unit Price	
						Pitching	Yawing	Rolling	Pitching	Yawing	Rolling			Type	M-L	Quantity	ZLPG
ZLPG ZLPCG (* only)	25*	25x25	±2	9.8	3μm	0.7	0.5	0.5	4.08	2.50	2.37	50μm	0.06	SCB2-8	4		
	40*	40x40	±3			2.3	1.5	2.0	1.96	1.63	0.97		0.20	SCB3-6	3		
	40H	40x40	±3	3.6		2.2	2.4	1.03	0.52	0.6	0.20		SCB3-6	4			
	60L	60x60	±3	2.3		1.5	4.2	1.01	0.72	0.21	0.30		SCB4-10				
	60*	60x60	±5	6.2		4.1	6.2	0.11	0.23	0.17	0.60		SCB4-10				
	80*	80x80	±5	29.4		3.8	2.5	6.3	0.55	0.22	0.06		1.00	SCB4-10			

Micrometer Head Resolution: 10μm/division *1. ZLPCG60 (feed screw) load capacity is 29.4N.

Knob Cover HDCVR13 (Sold Separately): Ø13 micrometer knob diameter can be increased by installing the cover. P2004

Extension Cover HDEXT13 (Sold Separately): Ø13 micrometer head knob can be extended. P2004

The micrometer head is only for raising and lowering the positioning stage. The scale and the amount by which the positioning stage is raised and lowered will vary.



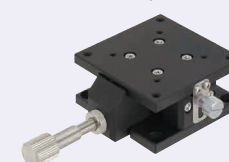
[High Precision] Z-Axis, Linear Guide Low Profile Micrometer Head / Feed Screw

Features: Low profile horizontal surface Z-Axis stages with 33mm profile height. Height can be kept low even for an XYZ configuration.

Horizontal Surface Z-Axis, Linear Guide Low Profile ZLTG (Micrometer Head Lead 0.5)

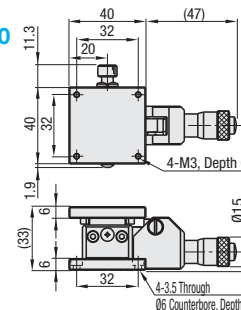


ZLTCG (Feed Screw Pitch 0.5)

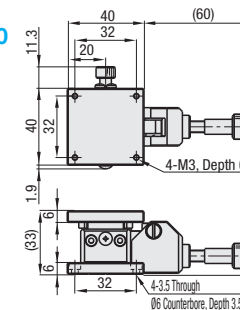


RoHS10

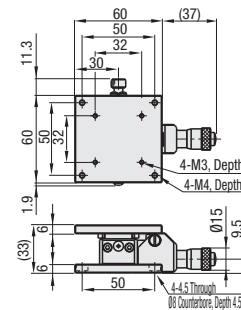
ZLTG40



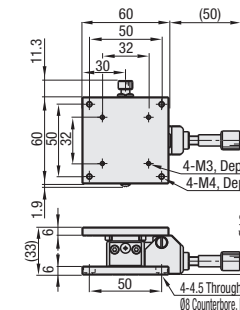
ZLTCG40



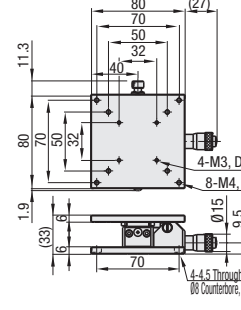
ZLTG60



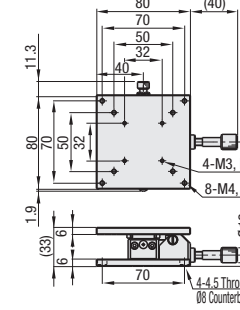
ZLTCG60



ZLTG80



ZLTCG80



The height dimensions in () are the dimensions at the center of the travel distance.

See the CAD data for details. For Feed Screw and Micrometer Head materials, see P2005, 2006. Surface Treatment: Black Anodize

Part Number Type	Stage Surface A	Stage Surface (mm)	Travel Distance (mm)	Load Capacity (N)	Travel Accuracy Straightness (μm)	Moment Load Capacity (N · m)			Moment Rigidity (1/N · cm)			Parallelism (μm)	Weight (kg)	Accessory (4 pcs.)	Unit Price
						Pitching	Yawing	Rolling	Pitching	Yawing	Rolling				
ZLTG	40	40x40	±3	19.6	5	0.9	1.5	0.5	3.66	0.91	5.64	100	0.16	SCB3-6	
	60	60x60	±3	29.4			2.3	0.7	3.67	0.25	4.81		0.24	SCB4-6	
	80	80x80	±3	29.4			3.0	0.6	3.52	0.07	4.99		0.32	SCB4-6	
ZLTCG	40	40x40	±3	19.6	5	0.9	1.5	0.5	3.66	0.91	5.64	100	0.14	SCB3-6	
	60	60x60	±3	29.4			2.3	0.7	3.67	0.25	4.81		0.22	SCB4-6	
	80	80x80	±3	29.4			3.0	0.6	3.52	0.07	4.99		0.30	SCB4-6	

Micrometer Head Resolution: 10μm/division

The micrometer head is only for raising and lowering the positioning stage. The scale and the amount by which the positioning stage is raised and lowered will vary.

